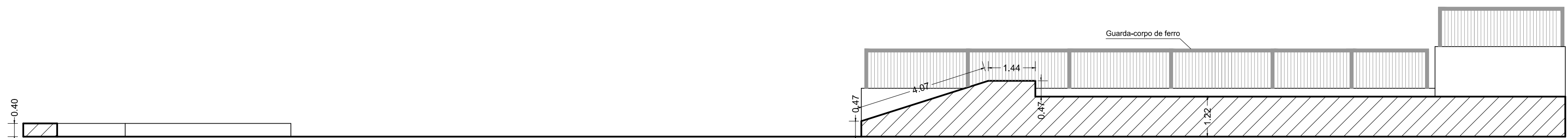
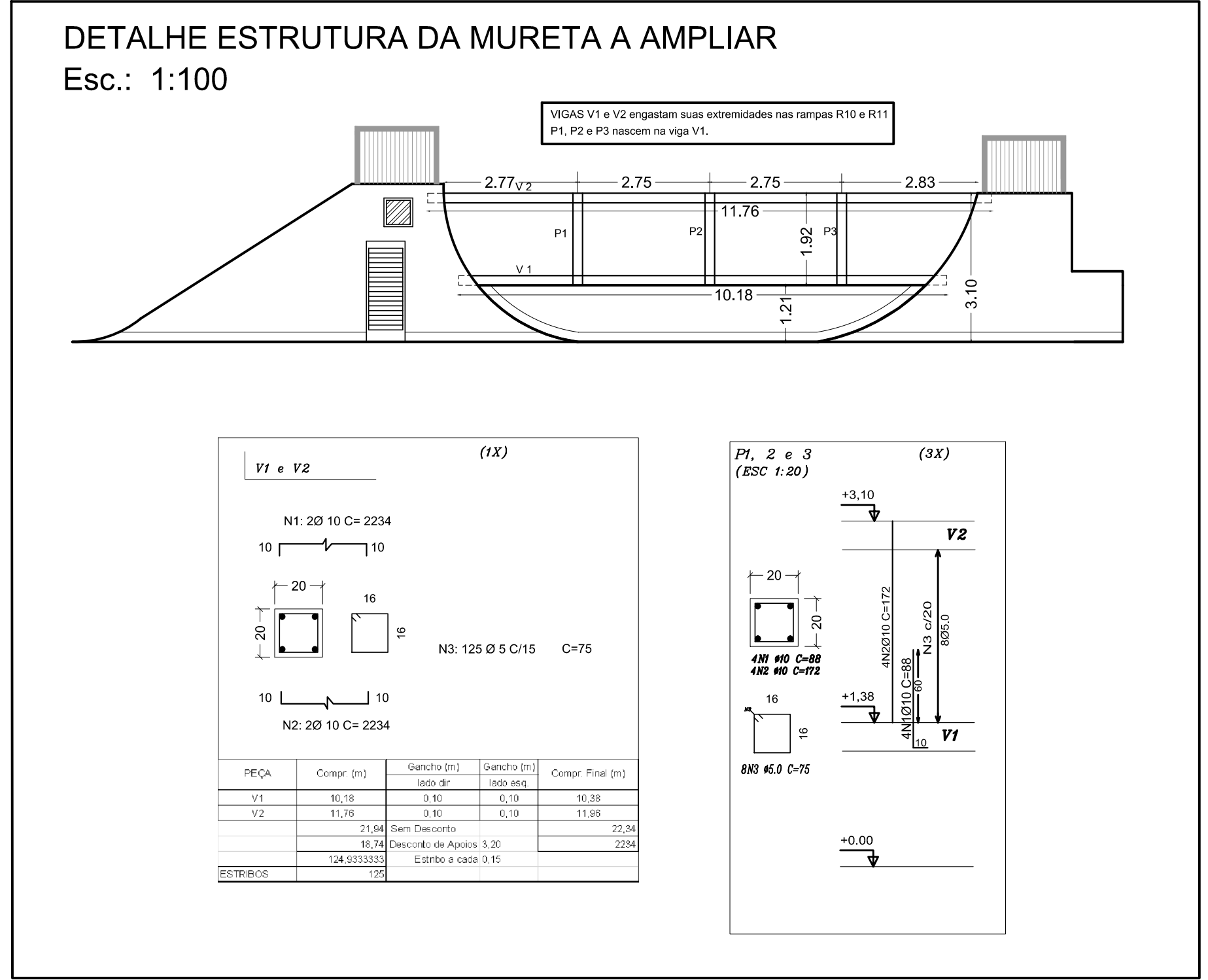


CORTE A:A
Esc.: 1:100



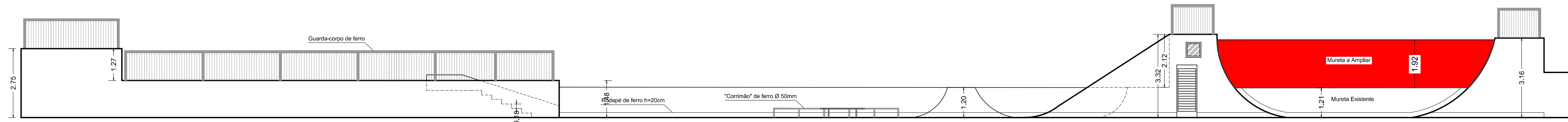
CORTE B:B
Esc.: 1:100



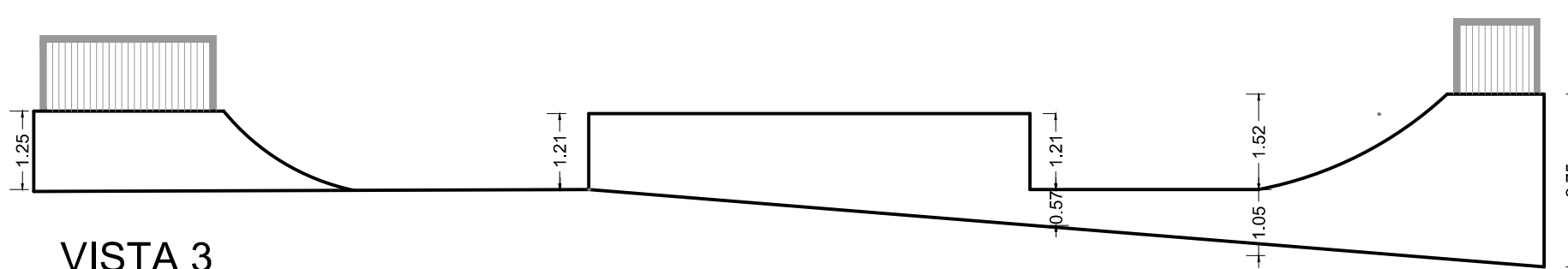
DETALHE ESTRUTURA DA MURETA A AMPLIAR
Esc.: 1:100



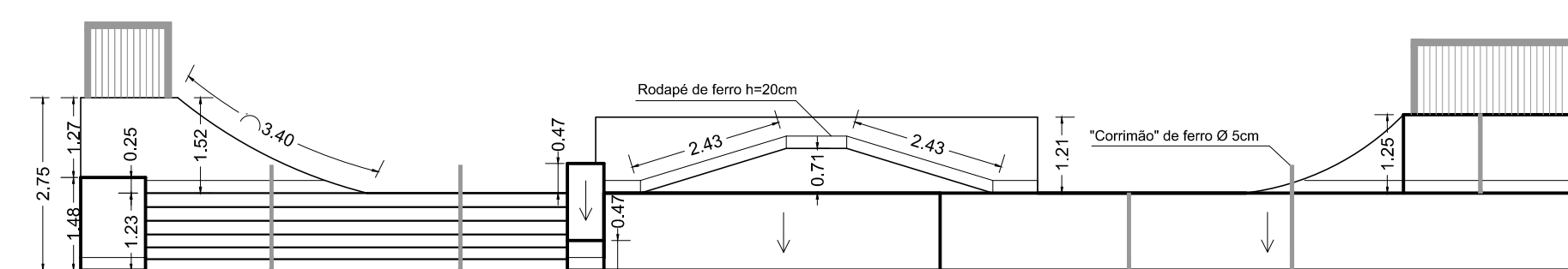
VISTA 1
R3, R4, R9, R10 e R11
Esc.: 1:100



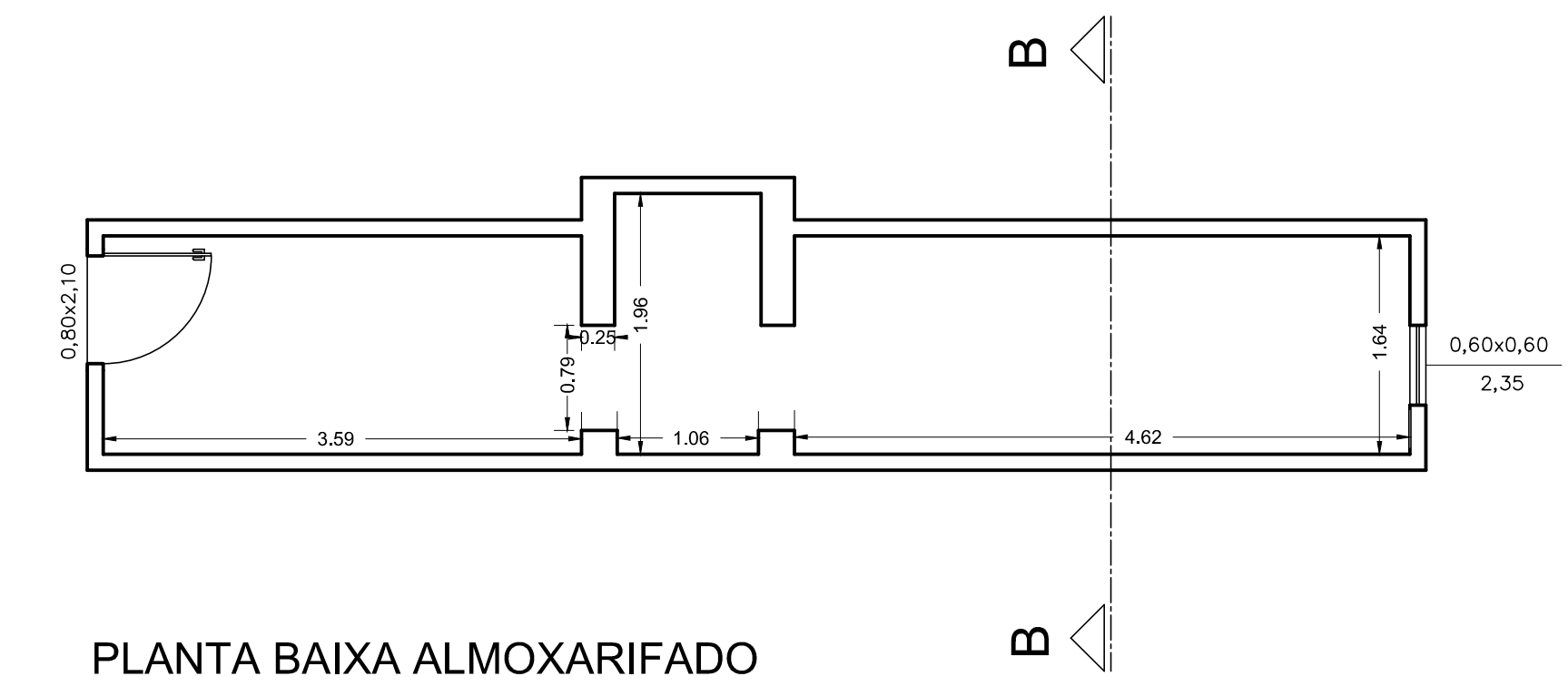
VISTA 2
R7, R7.1, R9, R10 e R11
Esc.: 1:100



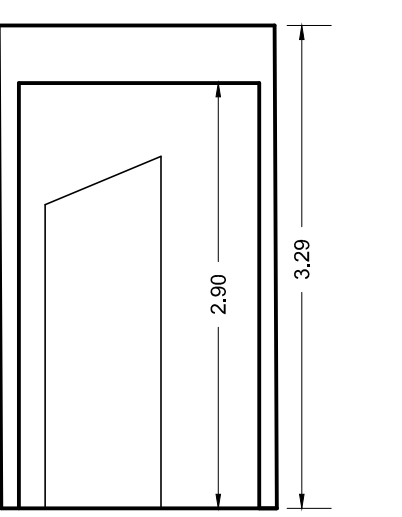
VISTA 3
R1 e R3
Esc.: 1:100



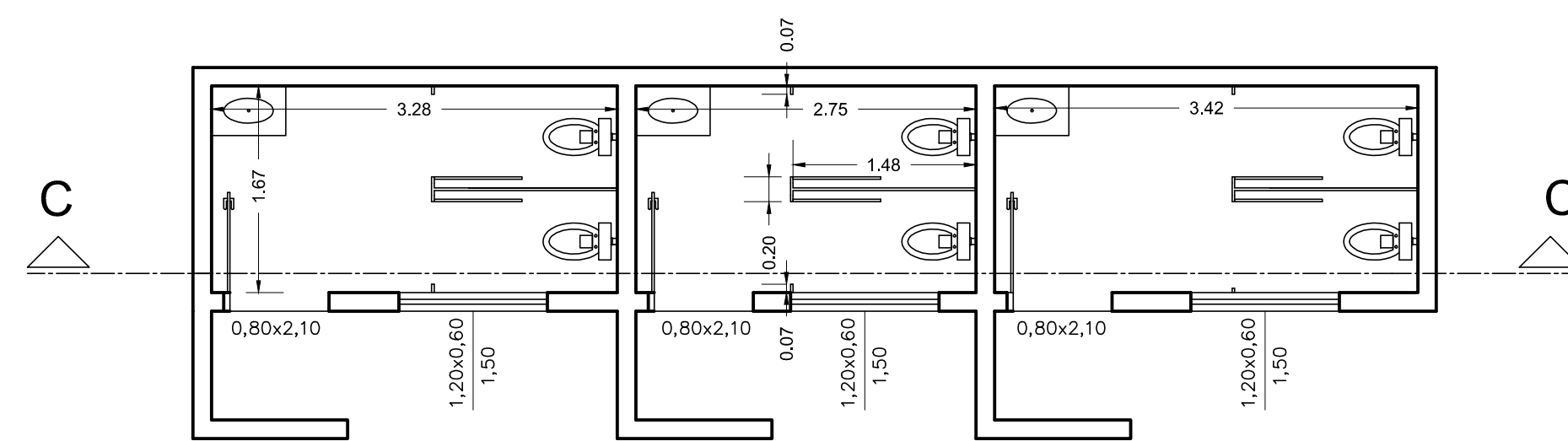
VISTA 4
R1, R2, R3, R4, R5 e R6
Esc.: 1:100



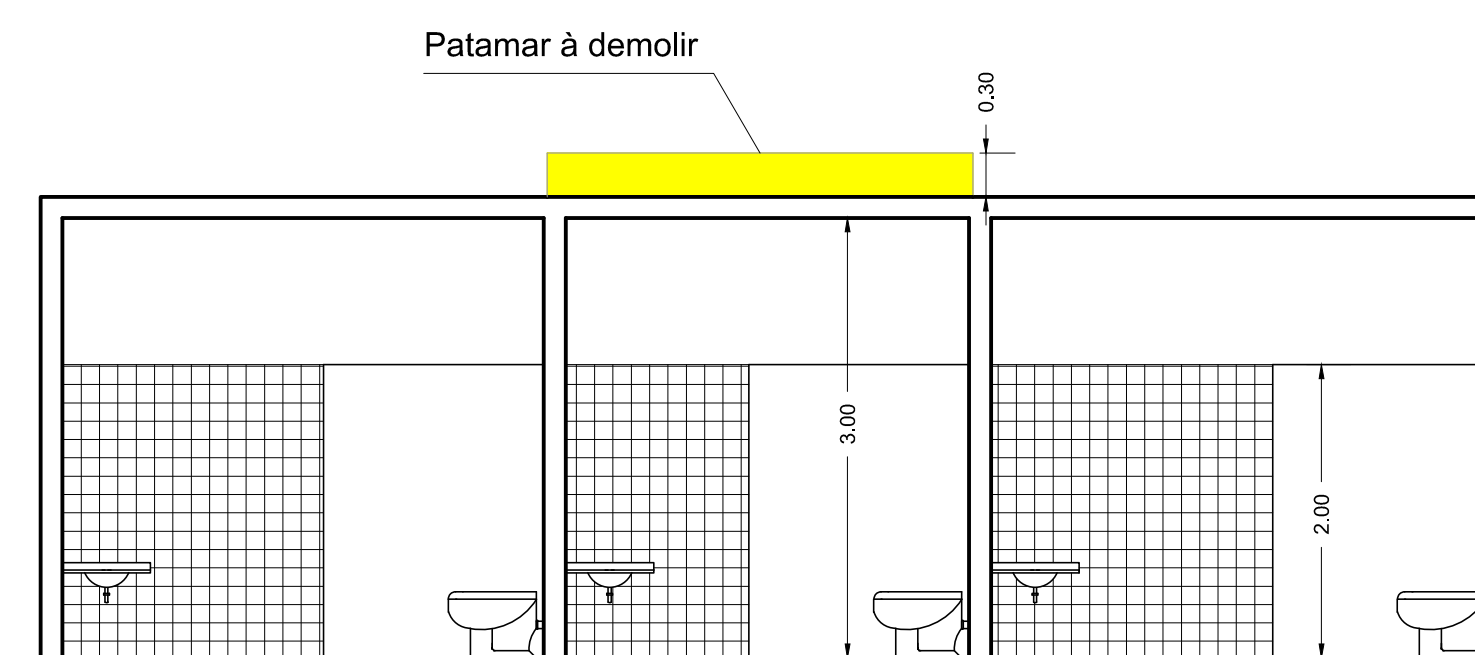
PLANTA BAIXA ALMOXARIFADO
SOB RAMPA R10
Esc.: 1:50



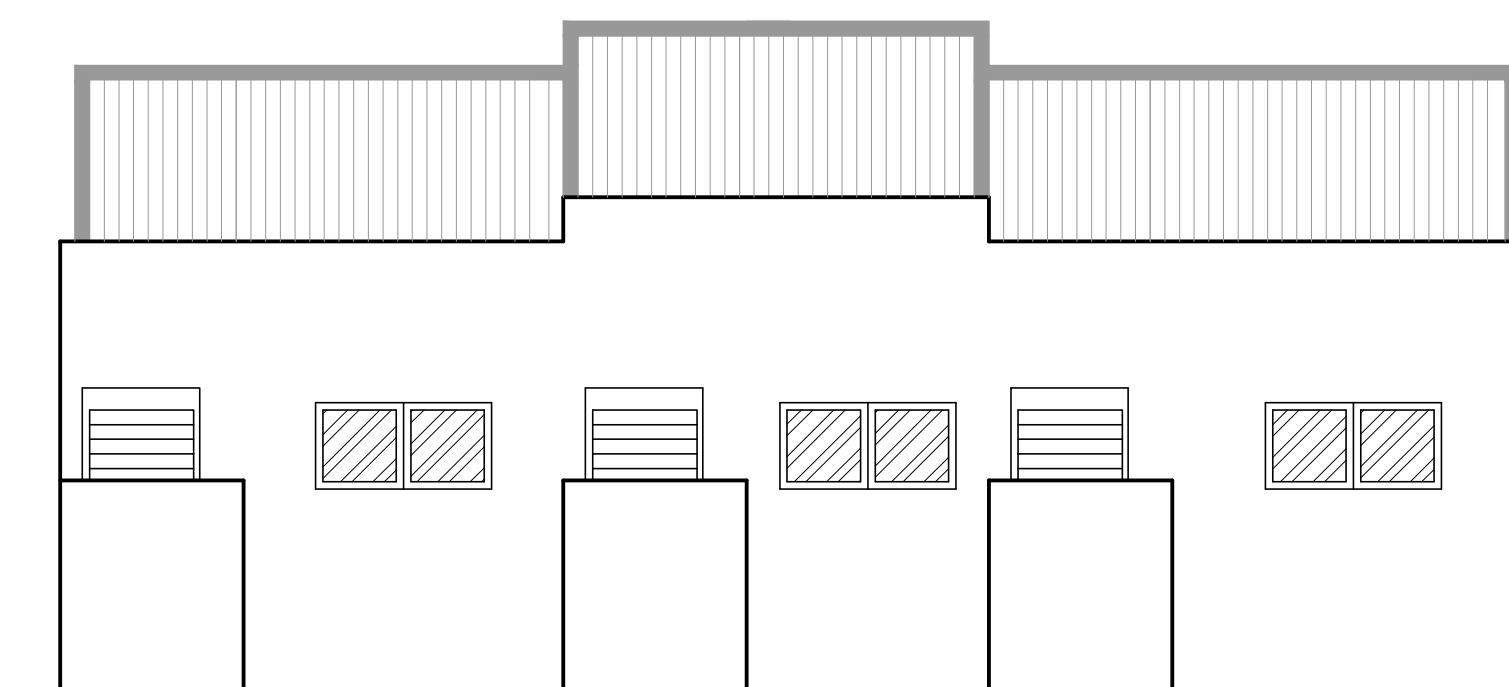
CORTE B:B
Esc.: 1:50



PLANTA BAIXA BANHEIROS
SOB RAMPA R11
Esc.: 1:50



CORTE C:C
Esc.: 1:50



VISTA 5
Esc.: 1:50



Localização

Eng. Adriano Poltronieri
A.R.T. - 92221220150553968

ORÇ: Revisão 1 - 27/07/2015			
SECRETARIA Planejamento	DEPARTAMENTO Projetos	DESENHO Agnes	FORMATAÇÃO 03 03
ESCALA Indicadas	DATA Março/2015	VISTO Adriano	

Prefeitura do Município de Jaguariúna
Rua Alfredo Bueno, 1235 - Centro - Jaguariúna-SP - CEP 13820-000-Fone: (019) 3867 9700-Fax: (019) 3867 2856

ASSUNTO: **Reforma e Modernização da Pista de Skate Vistas e Cortes**
Jd. Fontanella

ARQUIVO: