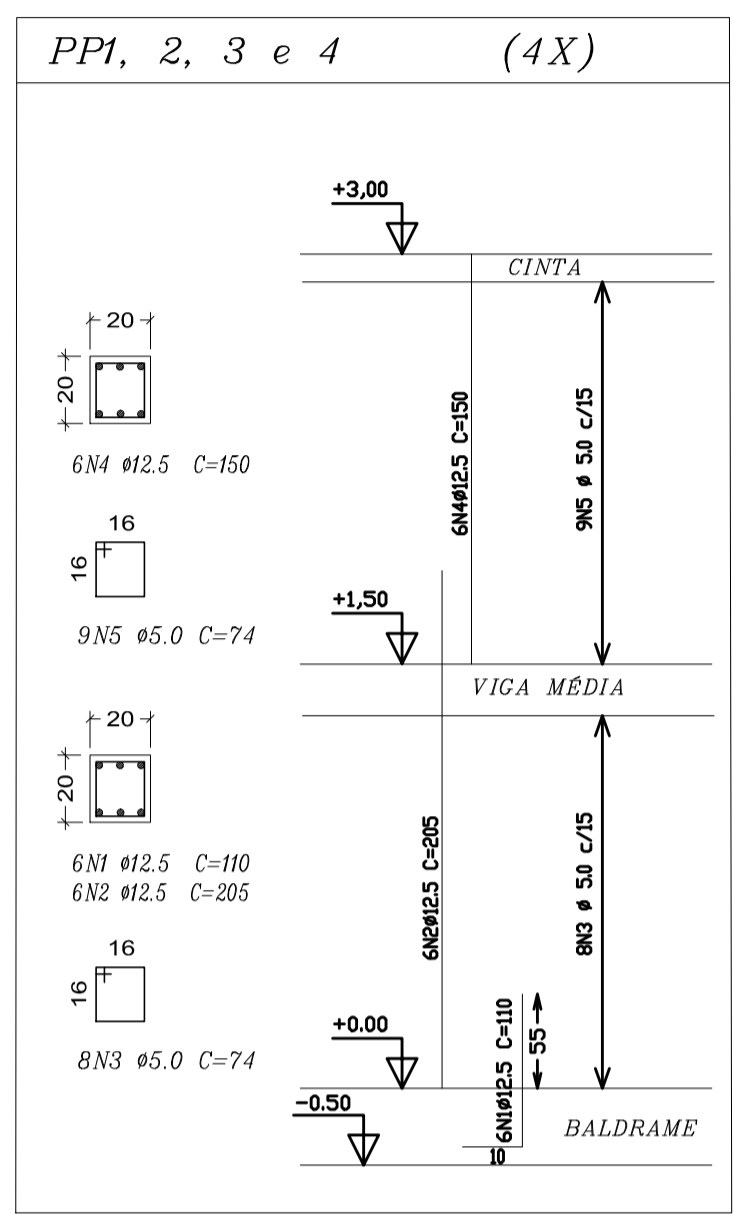


Elemento	Pos.	Diam.	Q.	Dob. (cm)	Reia (cm)	Dob. (cm)	Comp. (cm)	Total (cm)	CA-50-A (kg)	CA-60-B (kg)	
VM	1	Ø10	12	595	12	619	235	7,3			
	2	Ø10	12	595	12	619	235	7,8			
	3	Ø5	36			90	3240		1,7	5,7	
Total+10%									8,6		
CA	4	Ø10	2	12	595	12	619	235	7,8		
	Total+10%									8,6	
									Ø5:	0,2	5,7
									Ø10:	25,6	0,0
									Total:	25,6	5,7

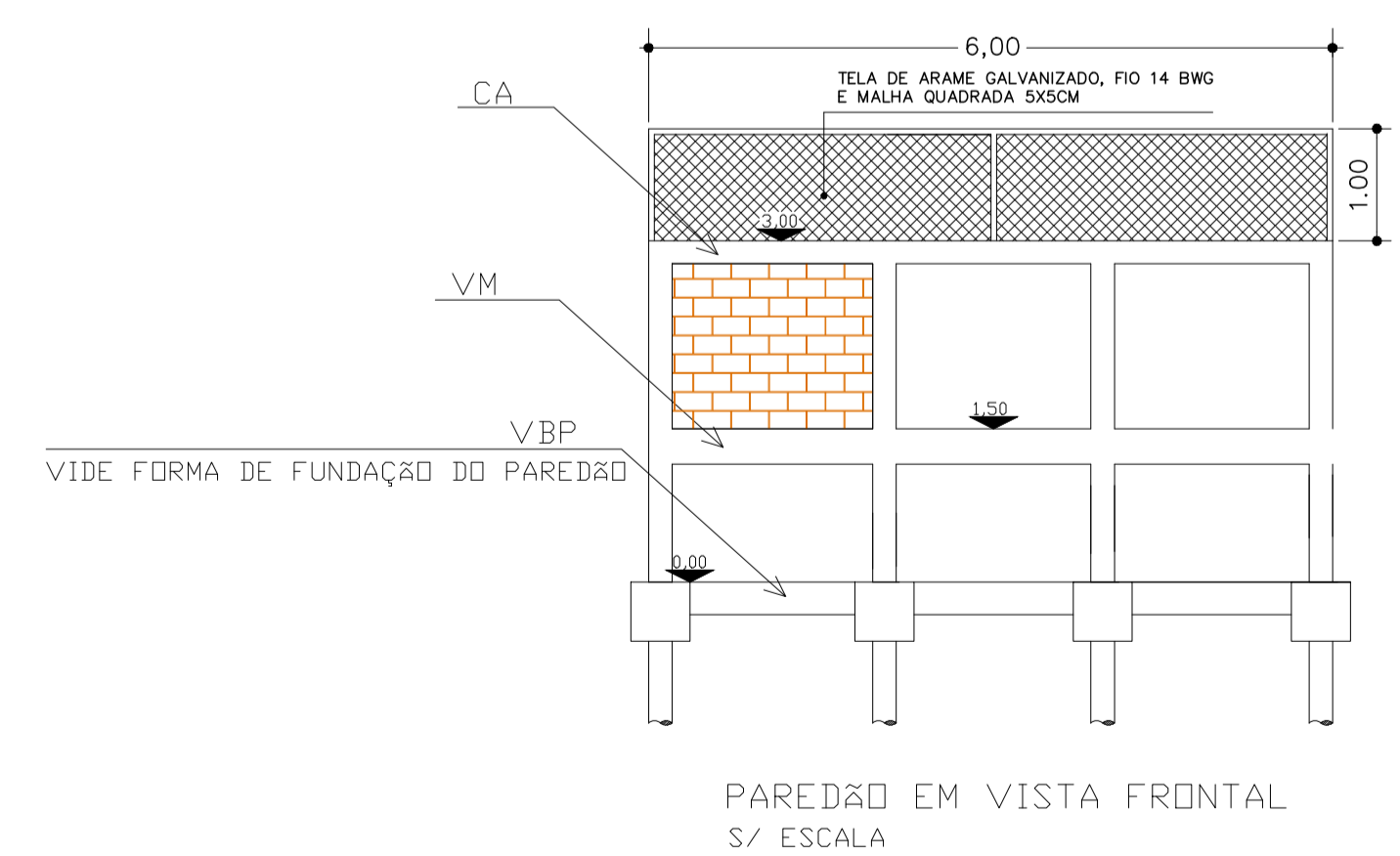
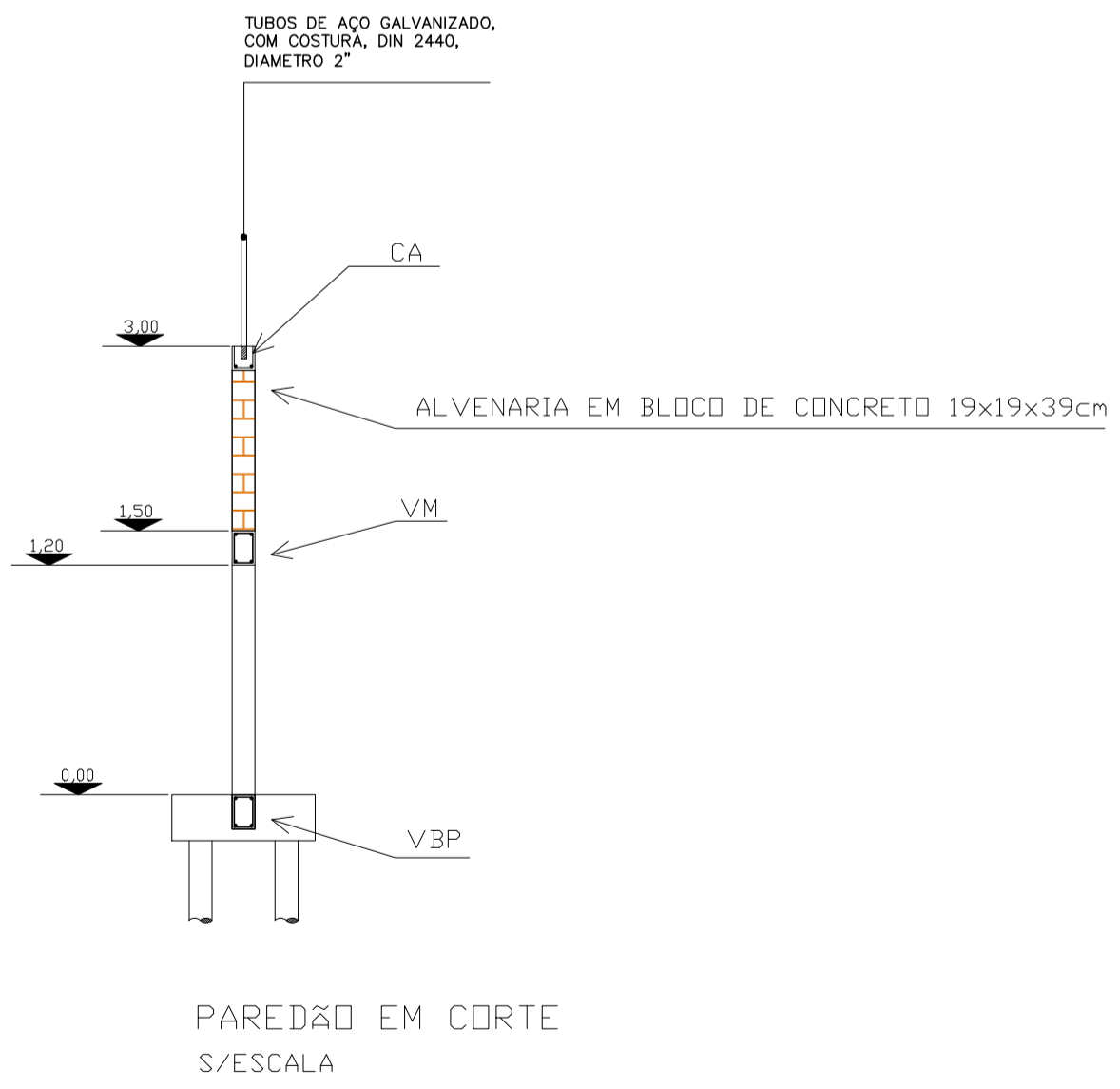
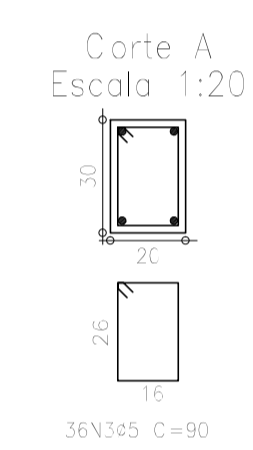
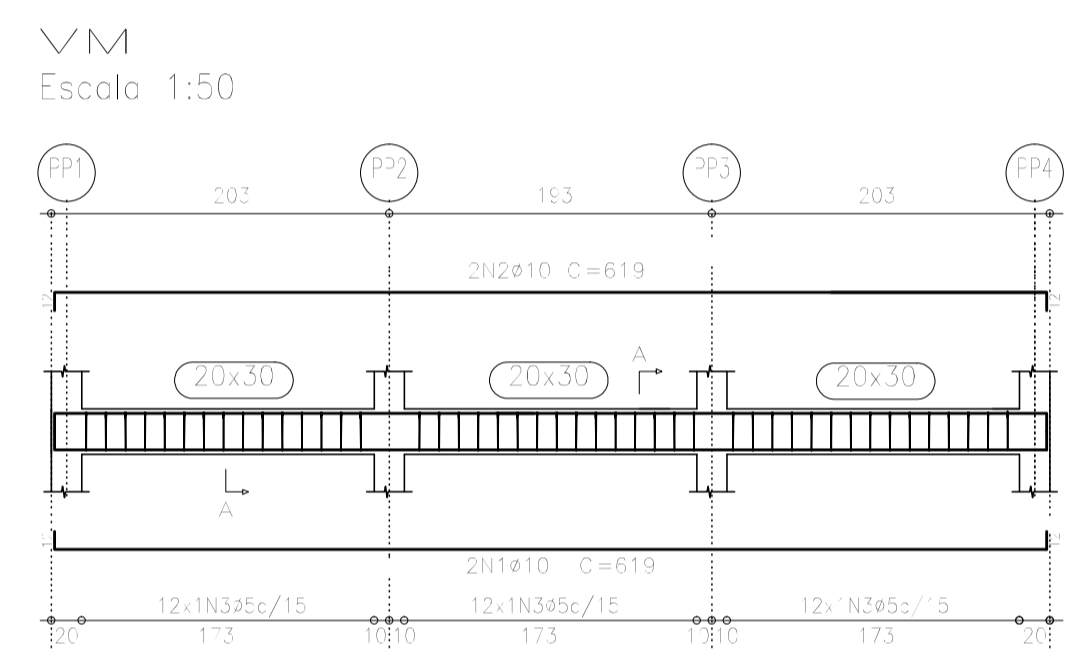
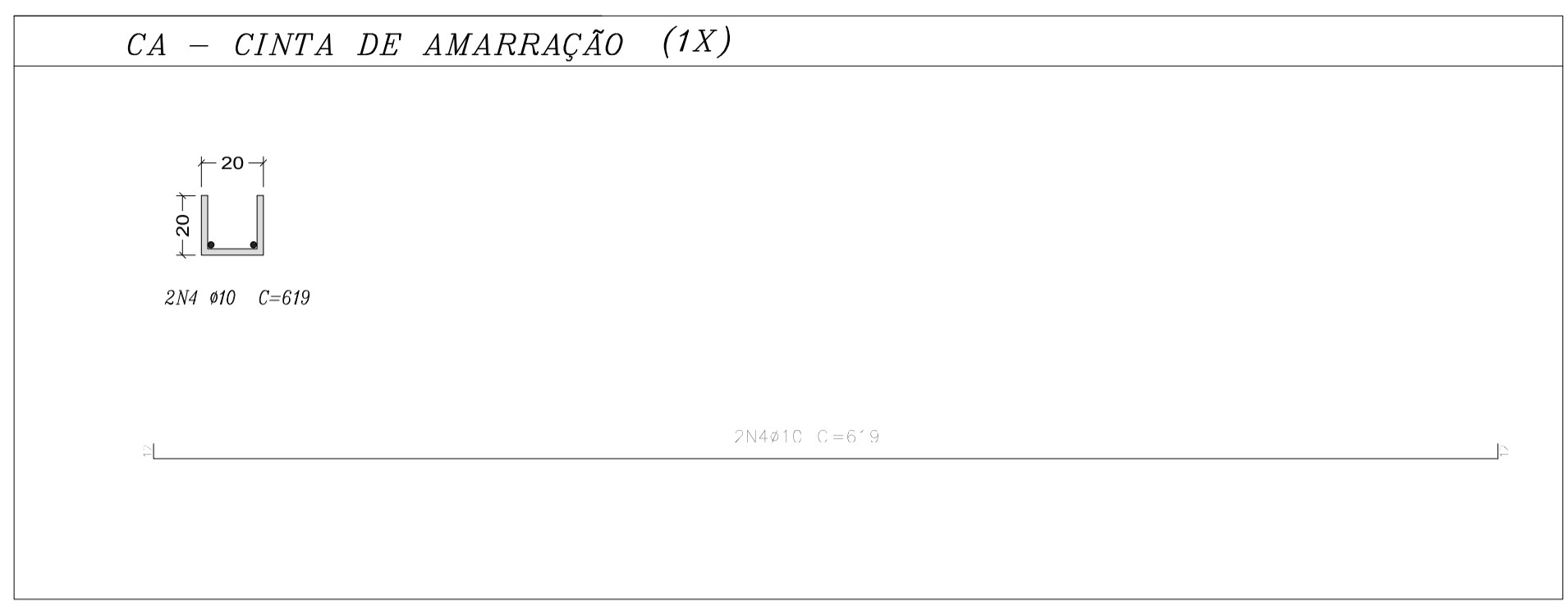
Resumo Aço Paredão Vigas	Comp. total (m)	Peso+10% (kg)
CA-50-A Ø10	3,7	25,6
CA-60-B Ø5	32,4	5,7
Total		31,3

Paredão - Resumo de materiais		
Elemento	Formas (m2)	Concreto (m3)
Pilares	6,0	0,48
VM	3,1	0,31
CA	0,0	0,19
Total	9,1	0,98

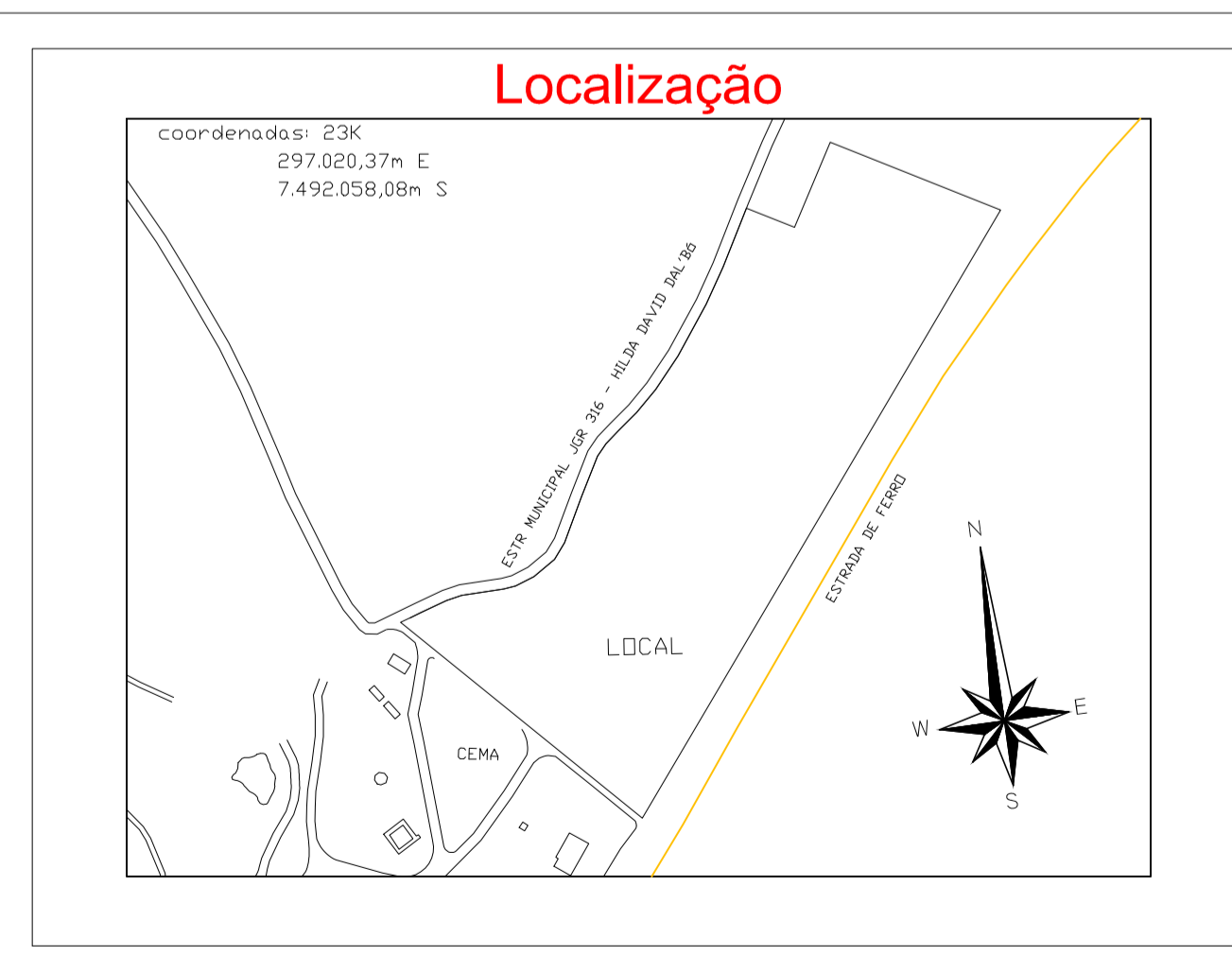


Aço	Pos.	Diam.	Q.	Comp. (cm)	Total (cm)	x 4 (cm)
CA-50-A	1	Ø12.5	6	110	660	2640
	2	Ø12.5	6	205	1230	4920
	4	Ø12.5	6	150	900	3600
CA-60-B	3	Ø5	8	74	592	2368
	5	Ø5	9	74	666	2664

Resumo Aço Paredão Pilares	Comp. total (m)	Peso+10% (kg)
CA-50-A Ø12.5	111,6	12,3
CA-60-B Ø5	50,3	8,9
Total		13,2



eng. Adriano Poltronieri
CREA nº 5060295777



Obs:				
SECRETARIA Planejamento		DEPARTAMENTO Arquitetura e Urbanismo		
ESCALA Indicada	DATA julho/2017	VISTO VISTO	DESENHO Adriano	FOLHA/TOTAL 1 / 1

Prefeitura do Município de Jaguariúna
Rua Alfredo Bueno, 1235 - Centro - Jaguariúna-SP - CEP 13820-000-Fone: (019) 3867 9700-Fax: (019) 3867 2856

Modernização de Infraestrutura Esportiva Estrutura do Paredão