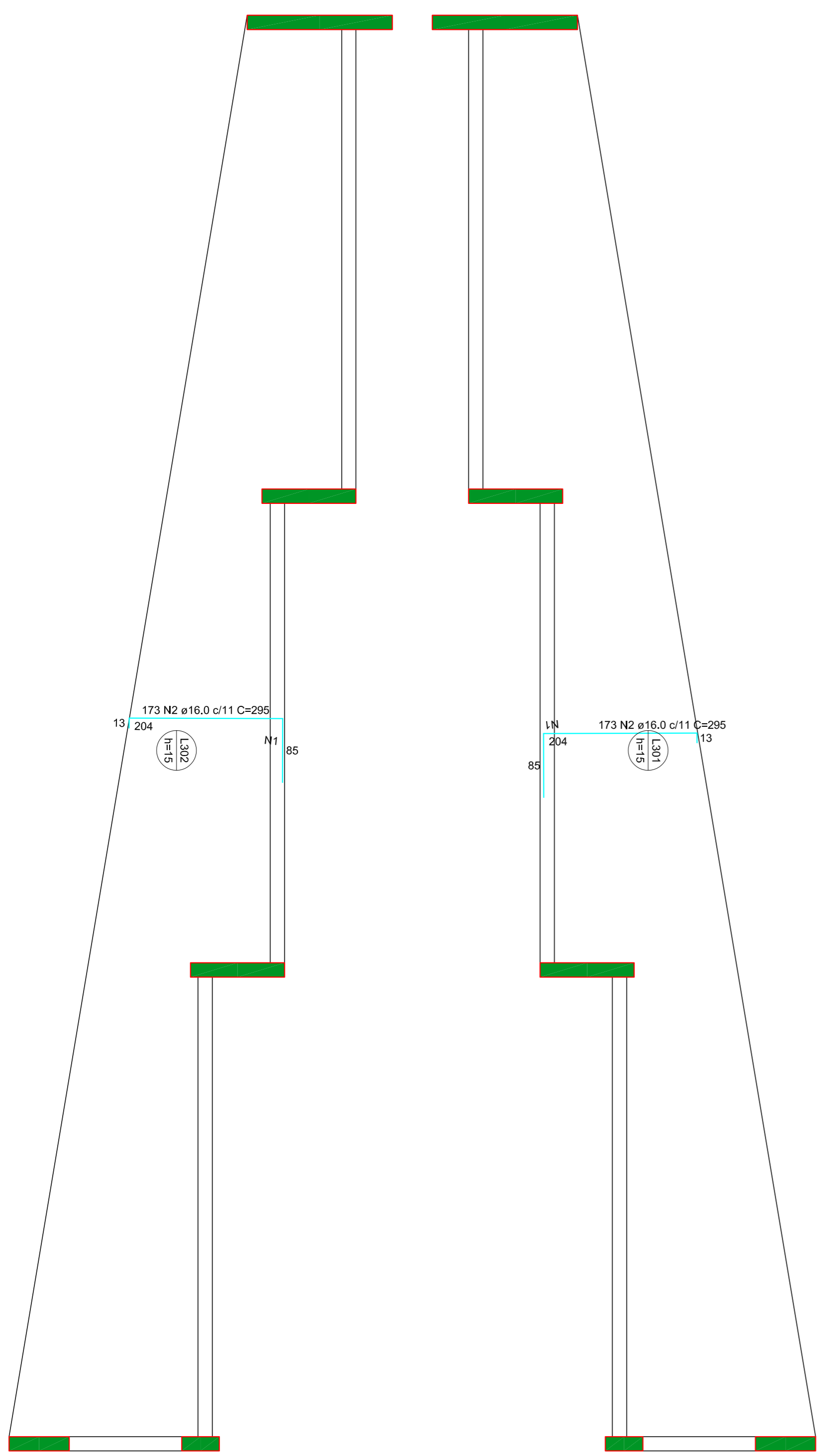


Ferros de distribuição

Ferro	Armadura de distribuição
N15	6 N1 ø5.0 c/16 C=46
N16	9 N2 ø5.0 c/16 C=VAR
N17	5 N3 ø5.0 c/16 C=133
N18	18 N4 ø5.0 c/12 C=VAR
N19	18 N5 ø5.0 c/12 C=VAR
N20	18 N6 ø5.0 c/12 C=151
N21	8 N7 ø5.0 c/16 C=VAR
N22	6 N8 ø5.0 c/16 C=48
N23	11 N9 ø5.0 c/16 C=100
N24	5 N10 ø5.0 c/16 C=42
N25	5 N11 ø5.0 c/16 C=50
N26	5 N12 ø5.0 c/17 C=180
N27	5 N13 ø5.0 c/17 C=180
N28	5 N14 ø5.0 c/17 C=180

Armação negativa das lajes do pavimento Laje Externa (Eixo X)  
escala 1:50

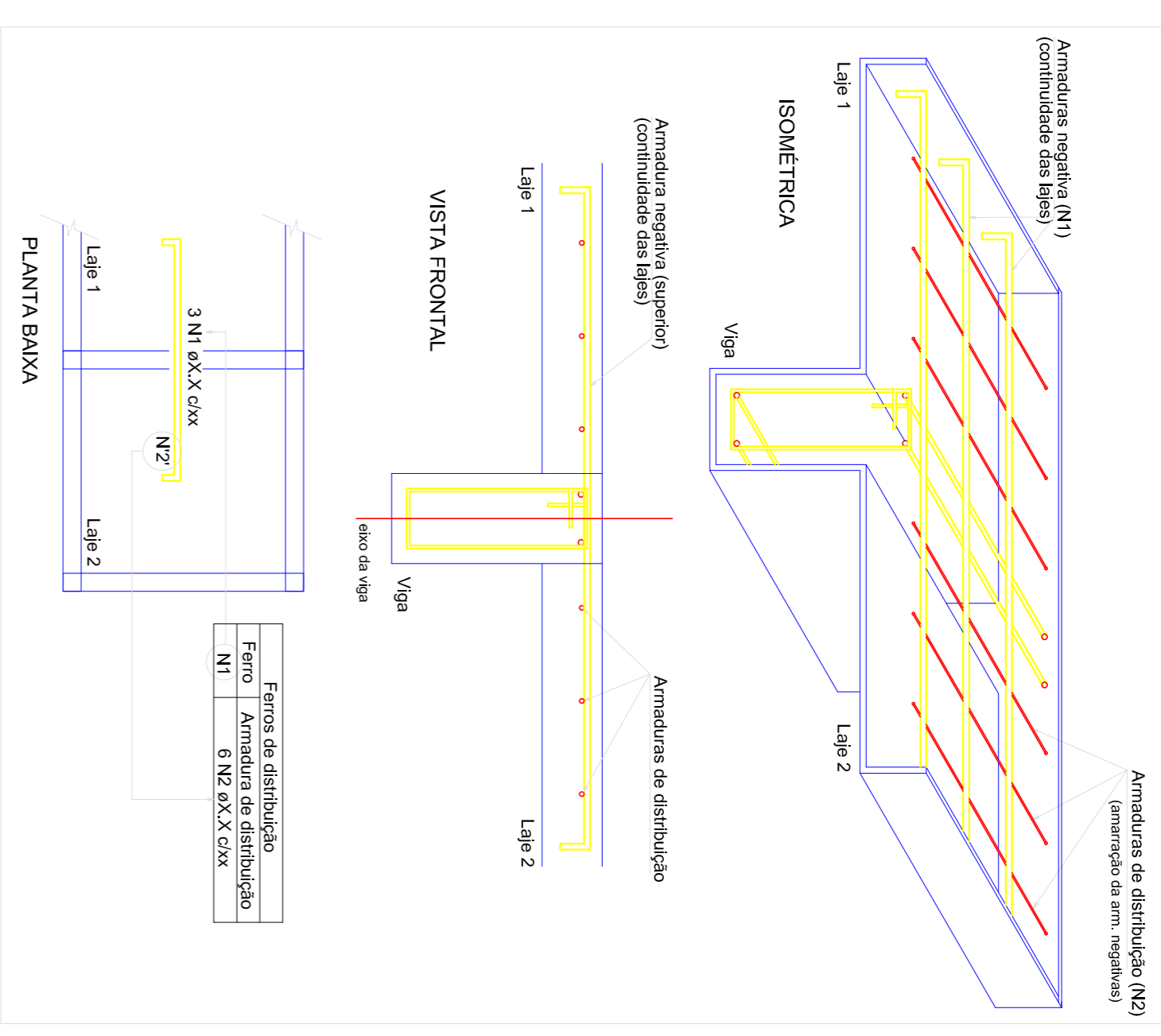


Ferros de distribuição

Ferro	Armadura de distribuição
N2	41 N1 ø5.0 c/15 C=VAR
N2	41 N1 ø5.0 c/15 C=VAR

Armação negativa das lajes do pavimento Laje Externa (Eixo Y)  
escala 1:50

DETALHE DA ARMADURA DE SUPERIOR DE CONTINUIDADE DA LAJE  
E MONTAGEM DA ARMADURA DE DISTRIBUIÇÃO



Ferros de distribuição

Ferro	Armadura de distribuição
N1	6 N2 øX c/XX

RELAÇÃO DO AÇO

ELEMENTO	AÇO	N	DIAM (mm)	QUANT	C.UINT (cm)	C.TOTAL (cm)
Negativos X						
CA80	1	5,0	6	46	276	
CA80	2	5,0	9	VAR	VAR	
CA80	3	5,0	13	VAR	VAR	
CA80	4	5,0	18	VAR	VAR	
CA80	5	5,0	11	96	1066	
CA80	6	5,0	18	151	2718	
CA80	7	5,0	18	VAR	VAR	
CA80	8	5,0	6	96	576	
CA80	9	5,0	11	100	1100	
CA80	10	5,0	5	51	255	
CA80	11	5,0	5	50	250	
CA80	12	5,0	5	50	250	
CA80	13	5,0	28	89	2472	
CA80	14	5,0	28	109	3052	
CA80	15	5,0	3	109	327	
CA80	16	5,0	5	VAR	VAR	
CA80	17	5,0	14	182	2548	
CA80	18	5,0	10	182	1820	
CA80	19	5,0	19	233	4427	
CA80	20	5,0	9	109	981	
CA80	21	5,0	5	109	545	
CA80	22	5,0	3	99	297	
CA80	23	5,0	3	99	297	
CA80	24	5,0	3	99	297	
CA80	25	5,0	3	99	297	
CA80	26	5,0	3	99	297	
CA80	27	5,0	3	99	297	
CA80	28	5,0	3	99	297	
CA80	29	5,0	3	99	297	
CA80	30	5,0	3	99	297	
CA80	31	5,0	3	99	297	
CA80	32	5,0	3	99	297	
CA80	33	5,0	3	99	297	
CA80	34	5,0	3	99	297	
CA80	35	5,0	3	99	297	
CA80	36	5,0	3	99	297	
CA80	37	5,0	3	99	297	
CA80	38	5,0	3	99	297	
CA80	39	5,0	3	99	297	
CA80	40	5,0	3	99	297	
CA80	41	5,0	3	99	297	
CA80	42	5,0	3	99	297	
CA80	43	5,0	3	99	297	
CA80	44	5,0	3	99	297	
CA80	45	5,0	3	99	297	
CA80	46	5,0	3	99	297	
CA80	47	5,0	3	99	297	
CA80	48	5,0	3	99	297	
CA80	49	5,0	3	99	297	
CA80	50	5,0	3	99	297	
CA80	51	5,0	3	99	297	
CA80	52	5,0	3	99	297	
CA80	53	5,0	3	99	297	
CA80	54	5,0	3	99	297	
CA80	55	5,0	3	99	297	
CA80	56	5,0	3	99	297	
CA80	57	5,0	3	99	297	
CA80	58	5,0	3	99	297	
CA80	59	5,0	3	99	297	
CA80	60	5,0	3	99	297	
CA80	61	5,0	3	99	297	
CA80	62	5,0	3	99	297	
CA80	63	5,0	3	99	297	
CA80	64	5,0	3	99	297	
CA80	65	5,0	3	99	297	
CA80	66	5,0	3	99	297	
CA80	67	5,0	3	99	297	
CA80	68	5,0	3	99	297	
CA80	69	5,0	3	99	297	
CA80	70	5,0	3	99	297	
CA80	71	5,0	3	99	297	
CA80	72	5,0	3	99	297	
CA80	73	5,0	3	99	297	
CA80	74	5,0	3	99	297	
CA80	75	5,0	3	99	297	
CA80	76	5,0	3	99	297	
CA80	77	5,0	3	99	297	
CA80	78	5,0	3	99	297	
CA80	79	5,0	3	99	297	
CA80	80	5,0	3	99	297	
CA80	81	5,0	3	99	297	
CA80	82	5,0	3	99	297	
CA80	83	5,0	3	99	297	
CA80	84	5,0	3	99	297	
CA80	85	5,0	3	99	297	
CA80	86	5,0	3	99	297	
CA80	87	5,0	3	99	297	
CA80	88	5,0	3	99	297	
CA80	89	5,0	3	99	297	
CA80	90	5,0	3	99	297	
CA80	91	5,0	3	99	297	
CA80	92	5,0	3	99	297	
CA80	93	5,0	3	99	297	
CA80	94	5,0	3	99	297	
CA80	95	5,0	3	99	297	
CA80	96	5,0	3	99	297	
CA80	97	5,0	3	99	297	
CA80	98	5,0	3	99	297	
CA80	99	5,0	3	99	297	
CA80	100	5,0	3	99	297	

RESUMO DO AÇO

AÇO	DIAM (mm)	C.TOTAL (m)	PESO + 10% (kg)
CA80	16,0	112	118,7
CA80	16,0	1020,7	1722,1
CA80	5,0	1715,8	2903,9
<b>PESO TOTAL</b>			
CA80	1890,8		
CA80	2903,9		

Volume de concreto (C=30) = 0,00 m³  
Área de forma = 0,00 m²

**PRADO FRANCO**  
ENGENHARIA E CONSTRUÇÃO

(19) 99398-1531  
(19) 98333-8448

contato@pradofranco.com.br  
www.pradofranco.com.br

Rua Dr. Carlos Norberto, 82, Centro, Sorocaba/SP

KELVIN W. B. FRANCO  
AUTOR DO PROJETO

PREFEITURA MUNICIPAL DE JAGUARUNA

CIENTE  
PREFEITURA MUNICIPAL DE JAGUARUNA

PROJETO  
CENTRO CULTURAL

ASSINTO  
PROJETO ESTRUTURAL  
ARMAÇÃO NEGATIVA LAJE EXTERNA

RESPONSÁVEL TÉCNICO:  
KELVIN WESLEY BINOTTI FRANCO

DATA:  
08/2018

ESC. INDICADA 17  
FOLHA 00  
REVISÃO 00

EMISSÃO PARA COMENTÁRIOS

DATA: 08/2018

Armação negativa das lajes do pavimento Laje Externa (Eixo Y)  
escala 1:50