

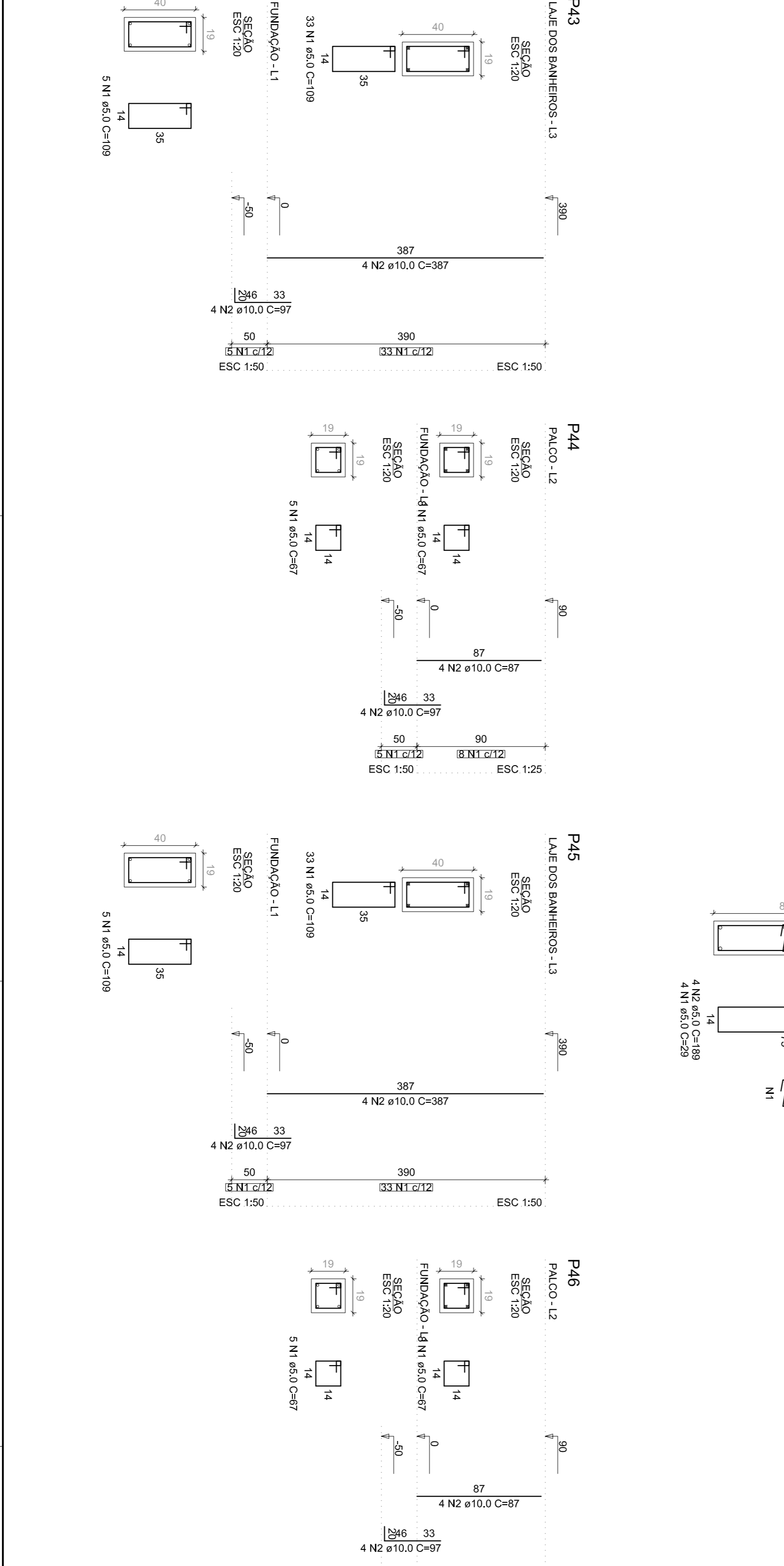
**RELAÇÃO DO AÇO**

| ELEMENTO               | AÇO  | N | DIAM (mm) | QUANT | C/INT (cm) | C/TOTAL (cm) |
|------------------------|------|---|-----------|-------|------------|--------------|
| P43-L3                 | CA80 | 1 | 5,0       | 33    | 109        | 3597         |
| P43-L3                 | CA80 | 2 | 10,0      | 4     | 367        | 1548         |
| P43-L3                 | CA80 | 4 | 12,5      | 4     | 105        | 476          |
| P44-L2                 | CA80 | 2 | 10,0      | 4     | 97         | 388          |
| P44-L2                 | CA80 | 1 | 5,0       | 8     | 67         | 536          |
| P44-L2                 | CA80 | 2 | 5,0       | 5     | 67         | 335          |
| P44-L2                 | CA80 | 3 | 5,0       | 5     | 67         | 335          |
| P45-L3                 | CA80 | 2 | 10,0      | 32    | 97         | 388          |
| P45-L3                 | CA80 | 4 | 10,0      | 4     | 109        | 437          |
| P45-L3                 | CA80 | 2 | 5,0       | 23    | 109        | 545          |
| P46-L2                 | CA80 | 1 | 10,0      | 4     | 87         | 348          |
| P46-L2                 | CA80 | 2 | 10,0      | 4     | 87         | 348          |
| P46-L2                 | CA80 | 1 | 5,0       | 5     | 67         | 335          |
| P46-L2                 | CA80 | 2 | 5,0       | 23    | 29         | 687          |
| P48-L3                 | CA80 | 2 | 5,0       | 23    | 129        | 1512         |
| P48-L3                 | CA80 | 2 | 20,0      | 26    | 262        | 6741         |
| P48-L3                 | CA80 | 2 | 5,0       | 29    | 129        | 3741         |
| P48-L3                 | CA80 | 3 | 5,0       | 29    | 129        | 3741         |
| P48-L3                 | CA80 | 3 | 5,0       | 6     | 373        | 2238         |
| P48-L3                 | CA80 | 2 | 10,0      | 6     | 373        | 2238         |
| P49-L1                 | CA80 | 2 | 10,0      | 29    | 189        | 582          |
| P49-L1                 | CA80 | 2 | 10,0      | 29    | 189        | 582          |
| P49-L1                 | CA80 | 1 | 5,0       | 109   | 109        | 545          |
| P49-L1                 | CA80 | 4 | 5,0       | 18    | 97         | 388          |
| P49-L1                 | CA80 | 2 | 5,0       | 18    | 189        | 3402         |
| P49-L1                 | CA80 | 3 | 12,5      | 26    | 262        | 1572         |
| P49-L1                 | CA80 | 3 | 12,5      | 23    | 189        | 4347         |
| P49-L1                 | CA80 | 3 | 12,5      | 4     | 382        | 2292         |
| P49-L1                 | CA80 | 1 | 5,0       | 4     | 29         | 105          |
| P49-L1                 | CA80 | 3 | 12,5      | 4     | 105        | 420          |
| P49-L1                 | CA80 | 1 | 5,0       | 6     | 105        | 630          |
| <b>PESO TOTAL (kg)</b> |      |   |           |       |            |              |
| CA80 125,4             |      |   |           |       |            |              |
| CA50 55,2              |      |   |           |       |            |              |

**RESUMO DO AÇO**

| AÇO               | DIAM (mm) | C.TOTAL (m) | PESO + 10% (kg) |
|-------------------|-----------|-------------|-----------------|
| CA50              | 10,0      | 114,7       | 77,8            |
| CA80              | 12,5      | 44,9        | 47,6            |
| CA80              | 2,0       | 52,0        | 52,0            |
| <b>PESO TOTAL</b> |           |             | <b>177,4</b>    |
| CA50              | 125,4     |             |                 |
| CA80              | 55,2      |             |                 |

Volume de concreto (C-30) = 2,68 m<sup>3</sup>  
 Área de forma = 33,72 m<sup>2</sup>



# PRADO FRANCO

ENGENHARIA E CONSTRUÇÃO

(19) 99398-1531  
 (19) 98333-8448

Rua Dr. Carlos Norberto, 82, Centro, Sorocaba/SP

contato@pradofranco.com.br  
 www.pradofranco.com.br

---

CLIENTE  
**PREFEITURA MUNICIPAL DE JAGUARUINA**

PROJETO  
**CENTRO CULTURAL**

ASSUNTO  
**PROJETO ESTRUTURAL**

RESPONSÁVEL TÉCNICO:  
**KELVIN WESLEY BINOTTI FRANCO**

ENGENHEIRO CIVIL CREA/SP 50894/55119

ART: **Z802723018/1198795**

DATA: **09/2018**

---

| REV. | DATA | EMISSÃO PARA COMENTÁRIOS | DESCRIÇÃO |
|------|------|--------------------------|-----------|
| 03   |      |                          |           |
| 02   |      |                          |           |
| 01   |      |                          |           |