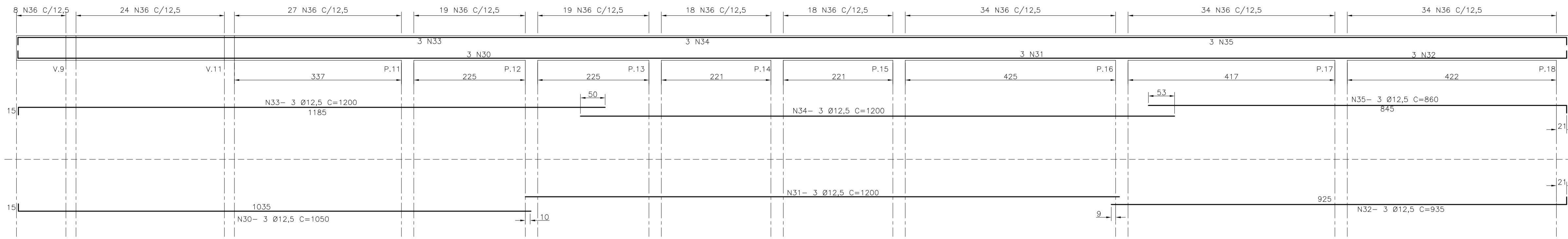
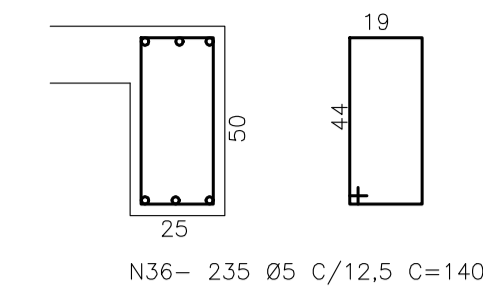


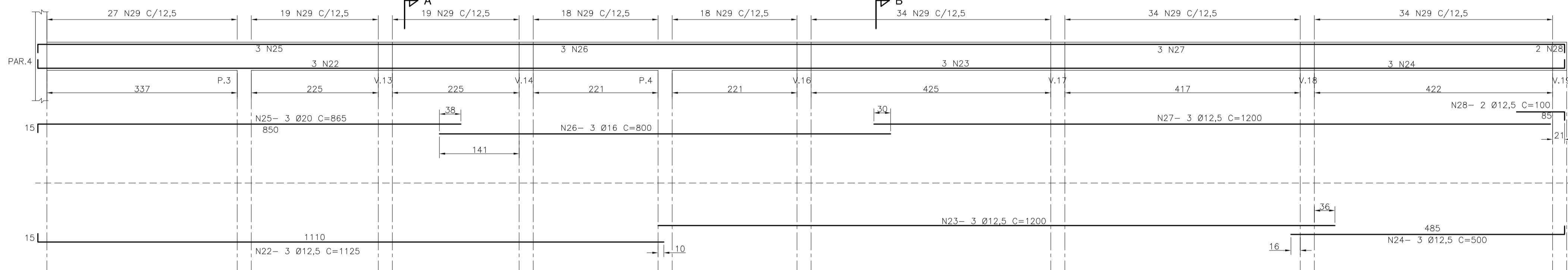
V.7 (25/50)



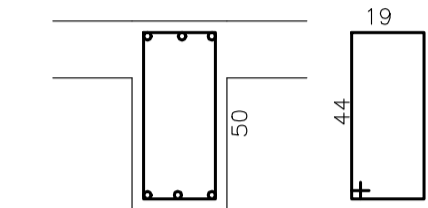
SEÇÃO - TIPO



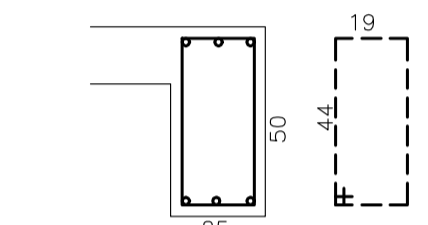
V.5 (25/50)



SEÇÃO A



SEÇÃO B



ARMAÇÃO VIGAS

LISTA DE FERROS

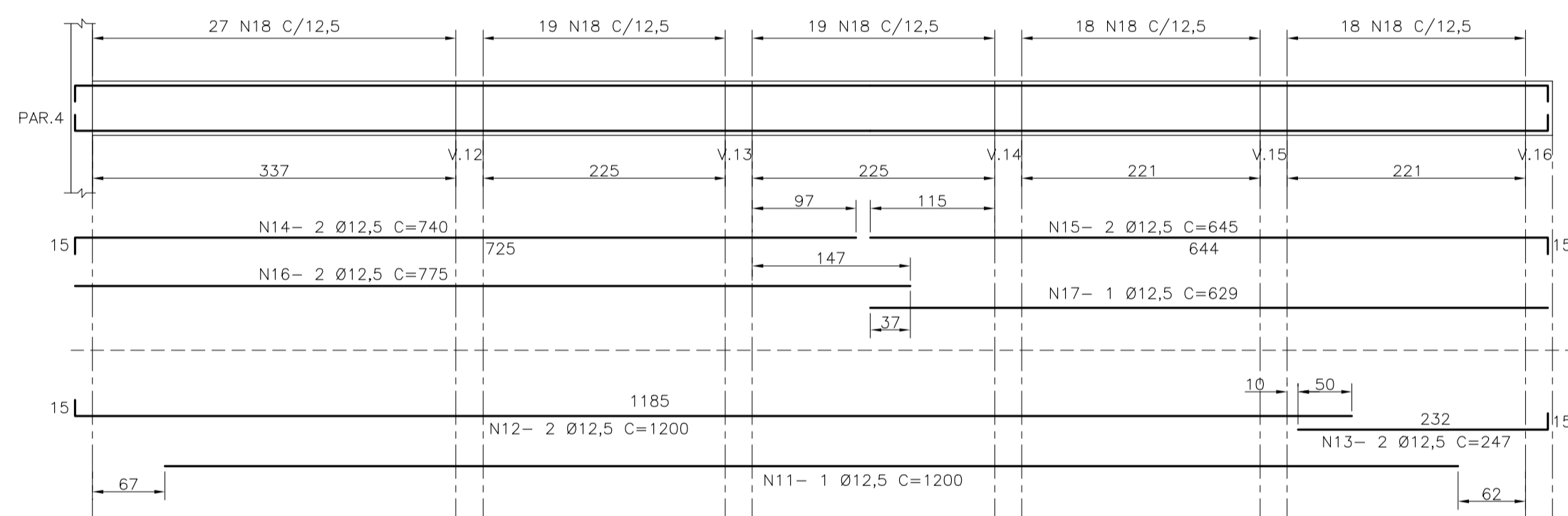
N	Ø (mm)	Q	C (cm)	QxC (m)
1	12,5	3	231	6,93
2	8	2	234	4,68
3	5	15	110	16,50
4	12,5	3	162	4,86
5	16	3	157	4,71
6	10	12	147	17,64
7	5	7	360	25,20
8				0,00
9				0,00
10				0,00
11	12,5	1	1200	12,00
12	12,5	2	1200	24,00
13	12,5	2	247	4,94
14	12,5	2	740	14,80
15	12,5	2	645	12,90
16	12,5	2	775	15,50
17	12,5	1	629	6,29
18	12,5	101	140	141,40
19	12,5	4	143	5,72
20	16	6	173	10,38
21	5	18	140	25,20
22	12,5	3	1125	33,75
23	12,5	23	1200	276,00
24	12,5	3	500	15,00
25	20	3	865	25,95
26	16	3	800	24,00
27	12,5	3	1200	36,00
28	12,5	2	100	2,00
29	5	12,5	203	25,38
30	12,5	3	1050	31,50
31	12,5	3	1200	36,00
32	12,5	3	1200	36,00
33	12,5	3	1200	36,00
34	12,5	3	1200	36,00
35	12,5	3	890	26,40
36	5	235	140	329,00
37	8	4	220	8,80
38	16	8	243	19,44
39	8	12	161	19,32
40	5	36	178	64,08
41	12,5	15	440	66,00
42	20	20	460	92,00
43	5	145	140	203,00
44	20	12	366	46,32
45	12,5	9	366	32,94
46	5	72	140	100,80
47	8	4	290	11,60
48	16	8	290	23,20
49	8	20	163	32,60
50	5	36	232	83,52

CANCELADO

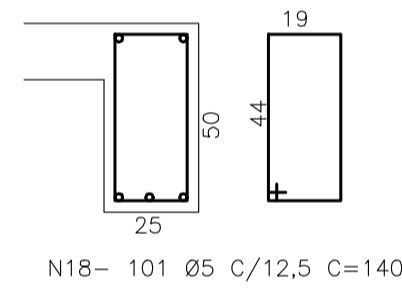
RESUMO

Ø (mm)	QxC (m)	PESO (Kg)
5	872,68	139,63
6,3	0,00	-
8	77,00	30,80
10	17,64	11,11
12,5	912,93	912,93
16	81,73	130,77
20	164,27	410,68
TOTAL CA 60		139,63
TOTAL CA 50		1496,29

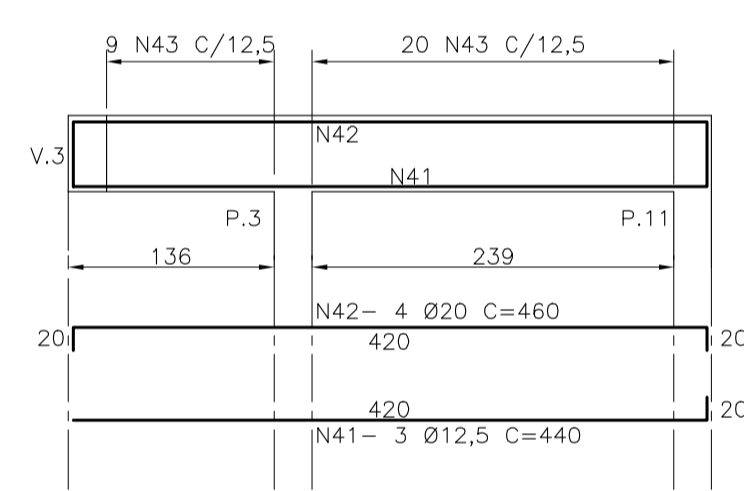
V.3 (25/50)



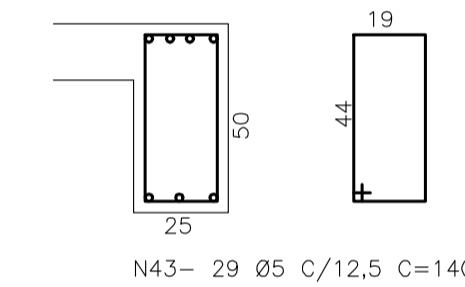
SEÇÃO TIPO



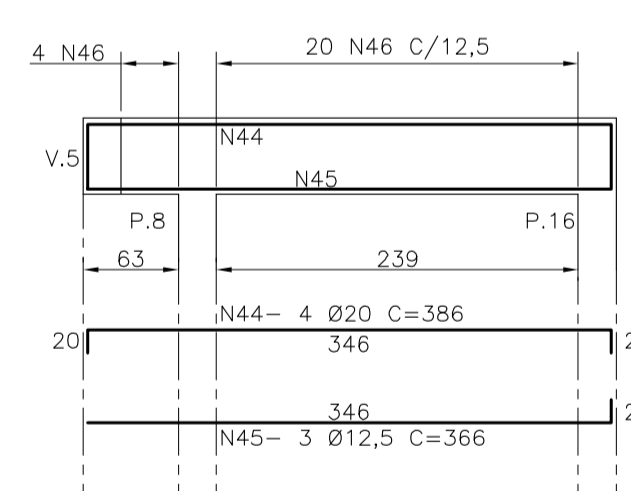
V.12 = V.13 = V.14 = V.15 = V.16 (25/50)



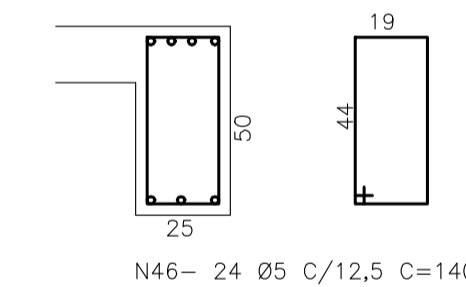
SEÇÃO - TIPO



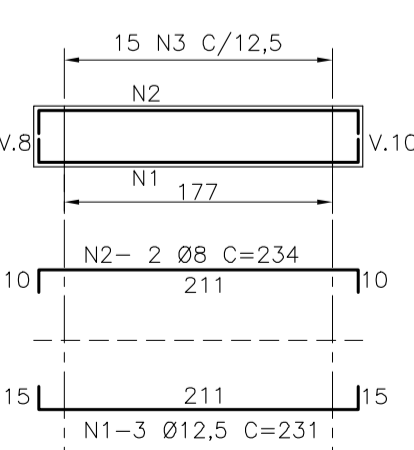
V.17 = V.18 = V.19 (25/50)



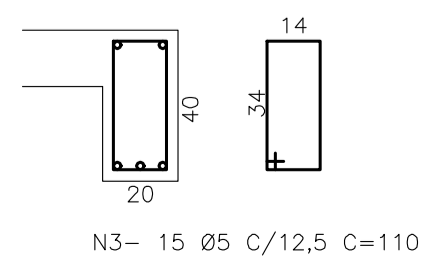
SEÇÃO - TIPO



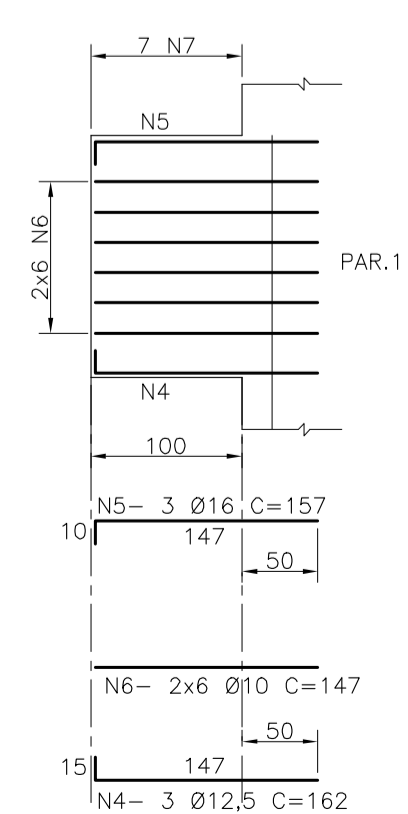
V.1 (20/40)



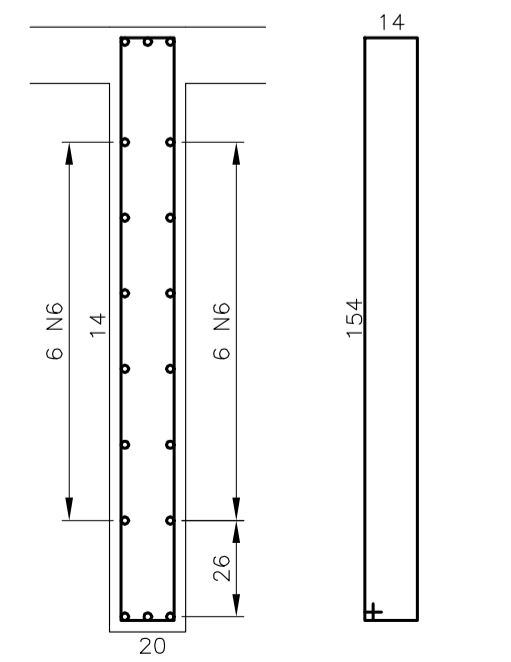
SEÇÃO TIPO



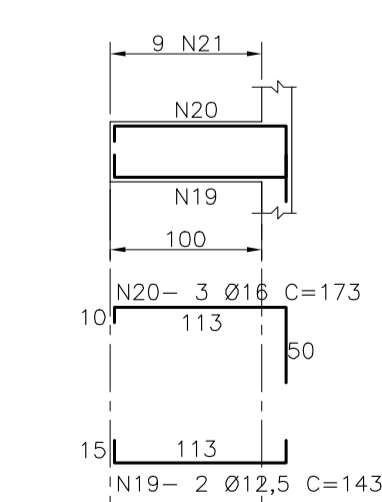
V.2 (20/160)



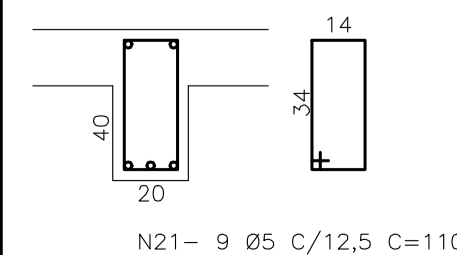
SEÇÃO TIPO



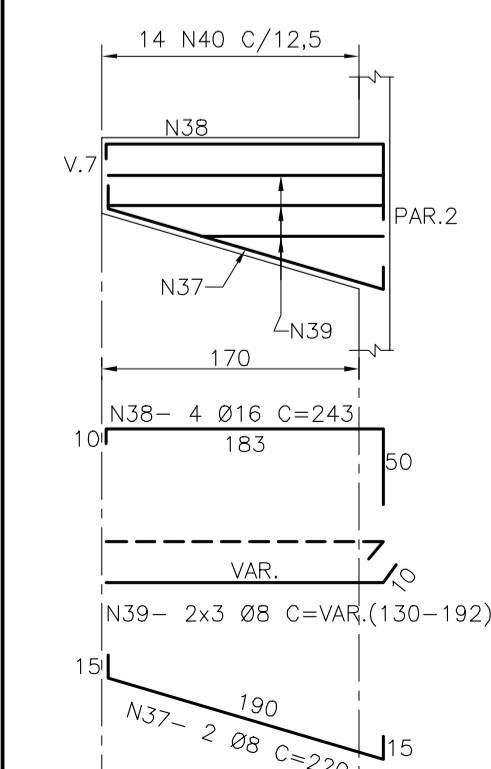
V.4 = V.6 (20/40)



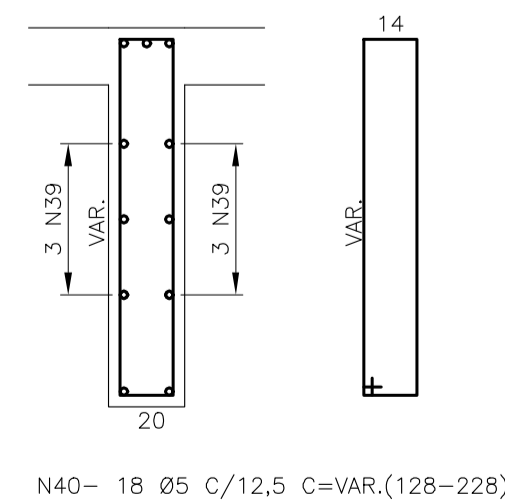
SEÇÃO TIPO



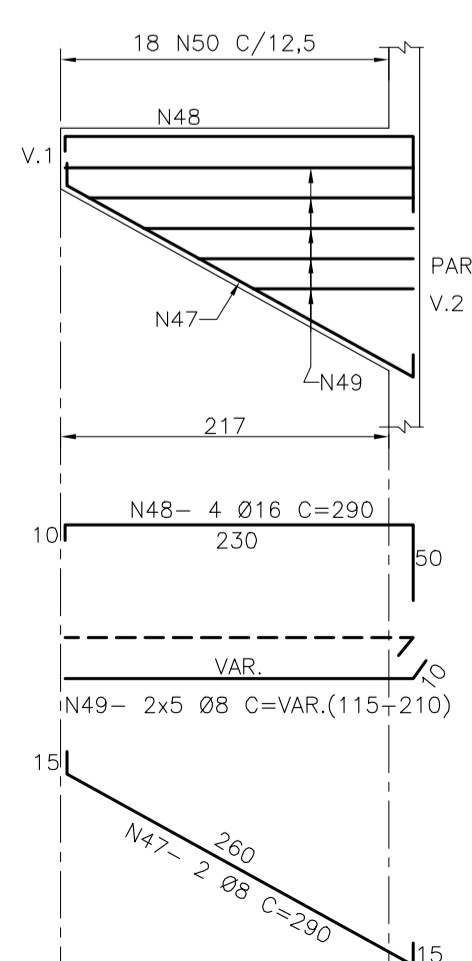
V.9 = V.11 (20/50-100)



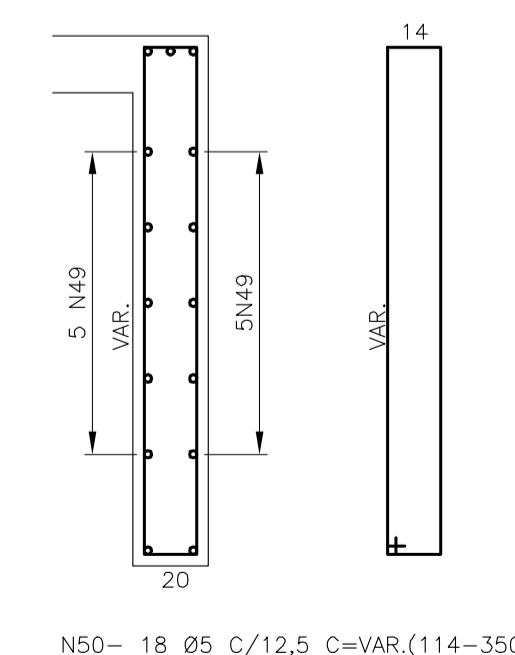
SEÇÃO TIPO



V.8 = V.10 (20/40-160)



SEÇÃO TIPO



DATA	DATA	MODIFICADO

**EMA Engenharia de Meio Ambiente Ltda**  
 CREA Nº 33793 - SP emeng@emaeng.com.br  
 Rua Carlos Francisco de Paula nº 91 - CAMPINAS CEP 13023-600 FONE: (019) 3252-2244

ENQº RESP. Sílvio Cordeiro de Oliveira Prop.: Prefeitura Municipal de Jaguariúna

EMPRESAMENTO: ESTAÇÃO DE TRATAMENTO DE AGUA  
 OBRA: RESERVATÓRIO CANALETAS DE ALIMENTAÇÃO  
 LOCAL: JAGUARIÚNA - SP  
 PROPRIETÁRIO: Prefeitura Municipal de Jaguariúna

DISCRIMINAÇÃO: PROJETO ESTRUTURAL ARMAÇÃO - VIGAS  
 DATA: 29/08/2007  
 PROJ.: J. AZEVEDO  
 DES.: J. AZEVEDO  
 ESCALA: indicada  
 REVISÃO: 0  
 ARQUIVO: ESTRUTURAL  
 ESTR\_008  
 FOLHA: