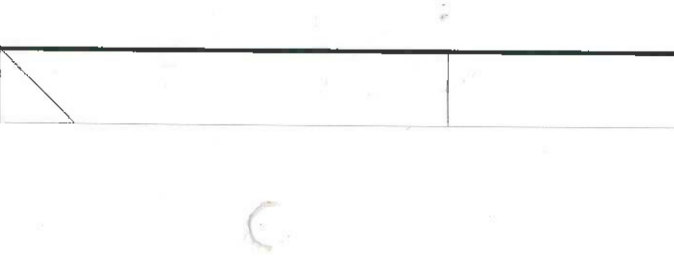
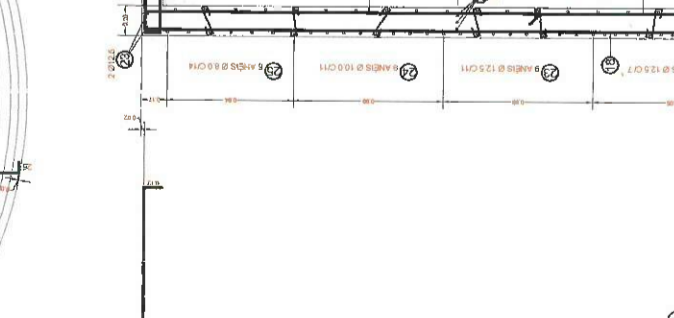
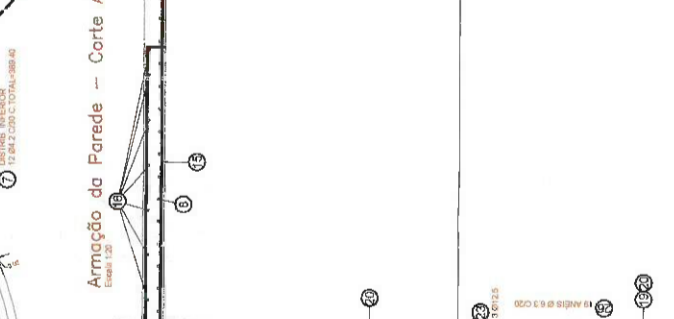
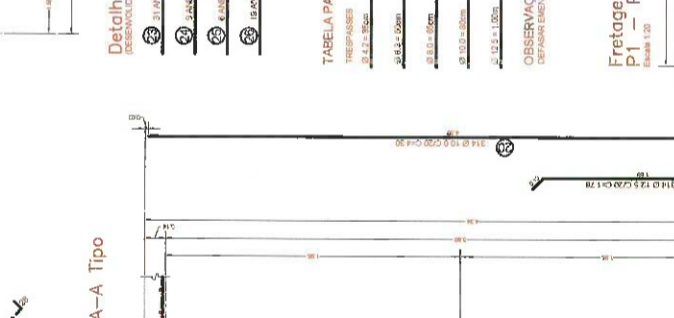
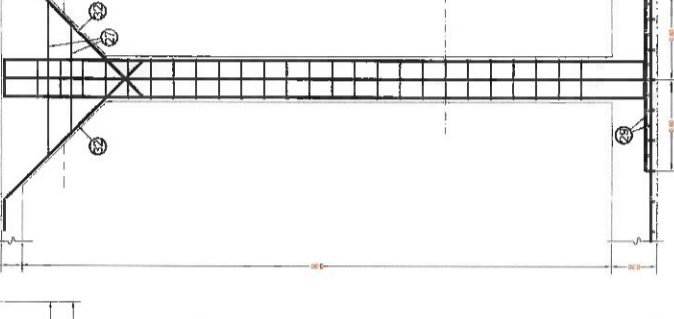
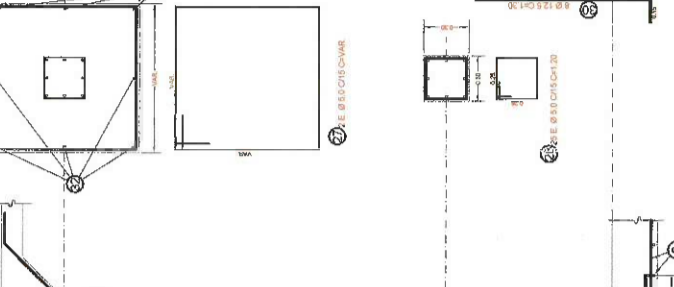
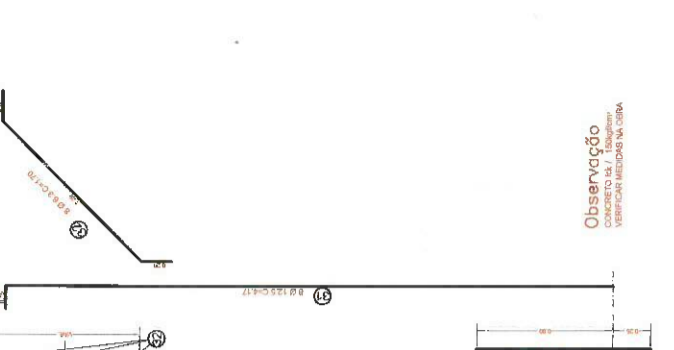
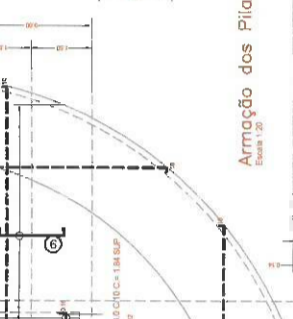
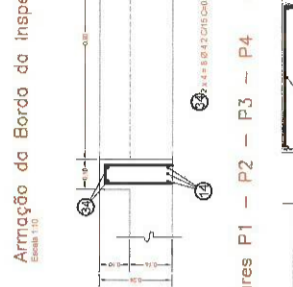
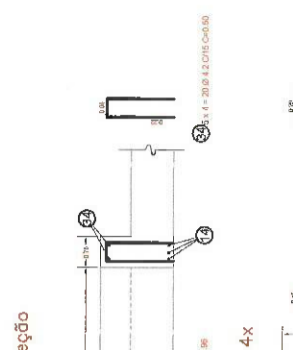
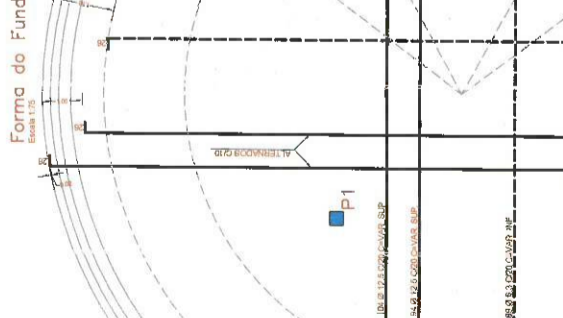
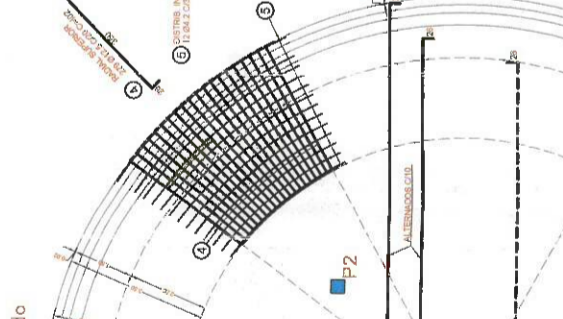
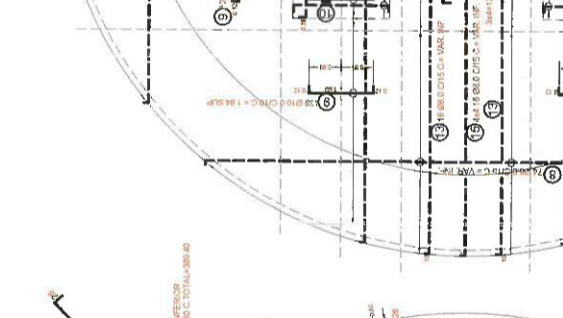
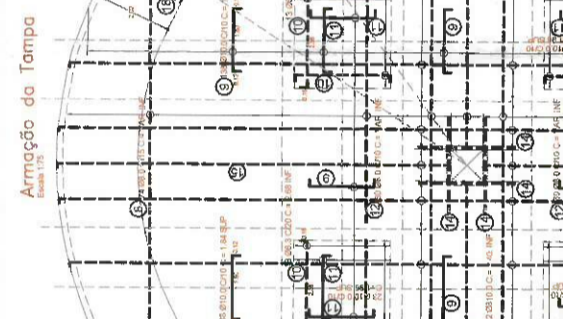
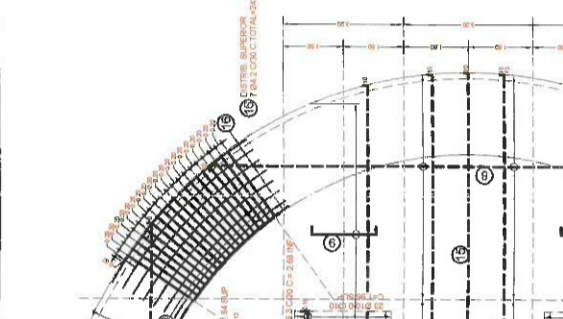


Resumo CA50			
Item	Nx.C	Mg. (Kg/m)	Mg. (Kg)
1	13.1	225	2947.5
2	13.2	195	2536.5
3	13.3	180	2322.0
4	13.4	165	2146.5
5	13.5	150	1971.0
6	13.6	135	1741.5
7	13.7	120	1554.0
8	13.8	105	1366.5
9	13.9	90	1179.0
10	14.0	75	991.5
11	14.1	60	789.0
12	14.2	45	586.5
13	14.3	30	394.0
14	14.4	15	191.5
15	14.5	0	0
16	14.6	0	0
17	14.7	0	0
18	14.8	0	0
19	14.9	0	0
20	15.0	0	0
21	15.1	0	0
22	15.2	0	0
23	15.3	0	0
24	15.4	0	0
25	15.5	0	0
26	15.6	0	0
27	15.7	0	0
28	15.8	0	0
29	15.9	0	0
30	16.0	0	0
31	16.1	0	0
32	16.2	0	0
33	16.3	0	0
34	16.4	0	0
35	16.5	0	0
36	16.6	0	0
37	16.7	0	0
38	16.8	0	0
39	16.9	0	0
40	17.0	0	0
41	17.1	0	0
42	17.2	0	0
43	17.3	0	0
44	17.4	0	0
45	17.5	0	0
46	17.6	0	0
47	17.7	0	0
48	17.8	0	0
49	17.9	0	0
50	18.0	0	0
51	18.1	0	0
52	18.2	0	0
53	18.3	0	0
54	18.4	0	0
55	18.5	0	0
56	18.6	0	0
57	18.7	0	0
58	18.8	0	0
59	18.9	0	0
60	19.0	0	0
61	19.1	0	0
62	19.2	0	0
63	19.3	0	0
64	19.4	0	0
65	19.5	0	0
66	19.6	0	0
67	19.7	0	0
68	19.8	0	0
69	19.9	0	0
70	20.0	0	0
71	20.1	0	0
72	20.2	0	0
73	20.3	0	0
74	20.4	0	0
75	20.5	0	0
76	20.6	0	0
77	20.7	0	0
78	20.8	0	0
79	20.9	0	0
80	21.0	0	0
81	21.1	0	0
82	21.2	0	0
83	21.3	0	0
84	21.4	0	0
85	21.5	0	0
86	21.6	0	0
87	21.7	0	0
88	21.8	0	0
89	21.9	0	0
90	22.0	0	0
91	22.1	0	0
92	22.2	0	0
93	22.3	0	0
94	22.4	0	0
95	22.5	0	0
96	22.6	0	0
97	22.7	0	0
98	22.8	0	0
99	22.9	0	0
100	23.0	0	0
101	23.1	0	0
102	23.2	0	0
103	23.3	0	0
104	23.4	0	0
105	23.5	0	0
106	23.6	0	0
107	23.7	0	0
108	23.8	0	0
109	23.9	0	0
110	24.0	0	0
111	24.1	0	0
112	24.2	0	0
113	24.3	0	0
114	24.4	0	0
115	24.5	0	0
116	24.6	0	0
117	24.7	0	0
118	24.8	0	0
119	24.9	0	0
120	25.0	0	0

Resumo CA60			
Item	Nx.C	Mg. (Kg/m)	Mg. (Kg)
1	13.1	225	2947.5
2	13.2	195	2536.5
3	13.3	180	2322.0
4	13.4	165	2146.5
5	13.5	150	1971.0
6	13.6	135	1741.5
7	13.7	120	1554.0
8	13.8	105	1366.5
9	13.9	90	1179.0
10	14.0	75	991.5
11	14.1	60	789.0
12	14.2	45	586.5
13	14.3	30	394.0
14	14.4	15	191.5
15	14.5	0	0
16	14.6	0	0
17	14.7	0	0
18	14.8	0	0
19	14.9	0	0
20	15.0	0	0
21	15.1	0	0
22	15.2	0	0
23	15.3	0	0
24	15.4	0	0
25	15.5	0	0
26	15.6	0	0
27	15.7	0	0
28	15.8	0	0
29	15.9	0	0
30	16.0	0	0
31	16.1	0	0
32	16.2	0	0
33	16.3	0	0
34	16.4	0	0
35	16.5	0	0
36	16.6	0	0
37	16.7	0	0
38	16.8	0	0
39	16.9	0	0
40	17.0	0	0
41	17.1	0	0
42	17.2	0	0
43	17.3	0	0
44	17.4	0	0
45	17.5	0	0
46	17.6	0	0
47	17.7	0	0
48	17.8	0	0
49	17.9	0	0
50	18.0	0	0
51	18.1	0	0
52	18.2	0	0
53	18.3	0	0
54	18.4	0	0
55	18.5	0	0
56	18.6	0	0
57	18.7	0	0
58	18.8	0	0
59	18.9	0	0
60	19.0	0	0
61	19.1	0	0
62	19.2	0	0
63	19.3	0	0
64	19.4	0	0
65	19.5	0	0
66	19.6	0	0
67	19.7	0	0
68	19.8	0	0
69	19.9	0	0
70	20.0	0	0
71	20.1	0	0
72	20.2	0	0
73	20.3	0	0
74	20.4	0	0
75	20.5	0	0
76	20.6	0	0
77	20.7	0	0
78	20.8	0	0
79	20.9	0	0
80	21.0	0	0
81	21.1	0	0
82	21.2	0	0
83	21.3	0	0
84	21.4	0	0
85	21.5	0	0
86	21.6	0	0
87	21.7	0	0
88	21.8	0	0
89	21.9	0	0
90	22.0	0	0
91	22.1	0	0
92	22.2	0	0
93	22.3	0	0
94	22.4	0	0
95	22.5	0	0
96	22.6	0	0
97	22.7	0	0
98	22.8	0	0
99	22.9	0	0
100	23.0	0	0
101	23.1	0	0
102	23.2	0	0
103	23.3	0	0
104	23.4	0	0
105	23.5	0	0
106	23.6	0	0
107	23.7	0	0
108	23.8	0	0
109	23.9	0	0
110	24.0	0	0
111	24.1	0	0
112	24.2	0	0
113	24.3	0	0
114	24.4	0	0
115	24.5	0	0
116	24.6	0	0
117	24.7	0	0
118	24.8	0	0
119	24.9	0	0
120	25.0	0	0



Observação: VERIFICAR MEDIDA NA OBRA.

Armação para os Pilares P1 - P2 - P3 - P4

TABELA PARA EMENDAS

Detalhe dos Anéis

Armação da Parede - Corte A-A Tipo

Armação da Tampo

Armação do Fundo

Armação da Distrib. dos Negativos

Armação da Borda da Inspeção

Prefeitura do Município de Jaquariúna
Secretaria de Gestão Ambiental
Departamento de Serviços Administrativos, Água e Esgoto
Rua: ...

ASISTENTE EM ENGENHARIA DE RESERVATÓRIO DE ÁGUA POTÁVEL
LOCAL: ...

PROFESSOR
Barbosa Filho, Carlos
R. ...

PROFESSOR
José Francisco B. Viegas Silva
R. ...

PROFESSOR
Barbosa Filho, Carlos
R. ...

PROFESSOR
José Francisco B. Viegas Silva
R. ...

PROFESSOR
Barbosa Filho, Carlos
R. ...

PROFESSOR
José Francisco B. Viegas Silva
R. ...

PROFESSOR
Barbosa Filho, Carlos
R. ...