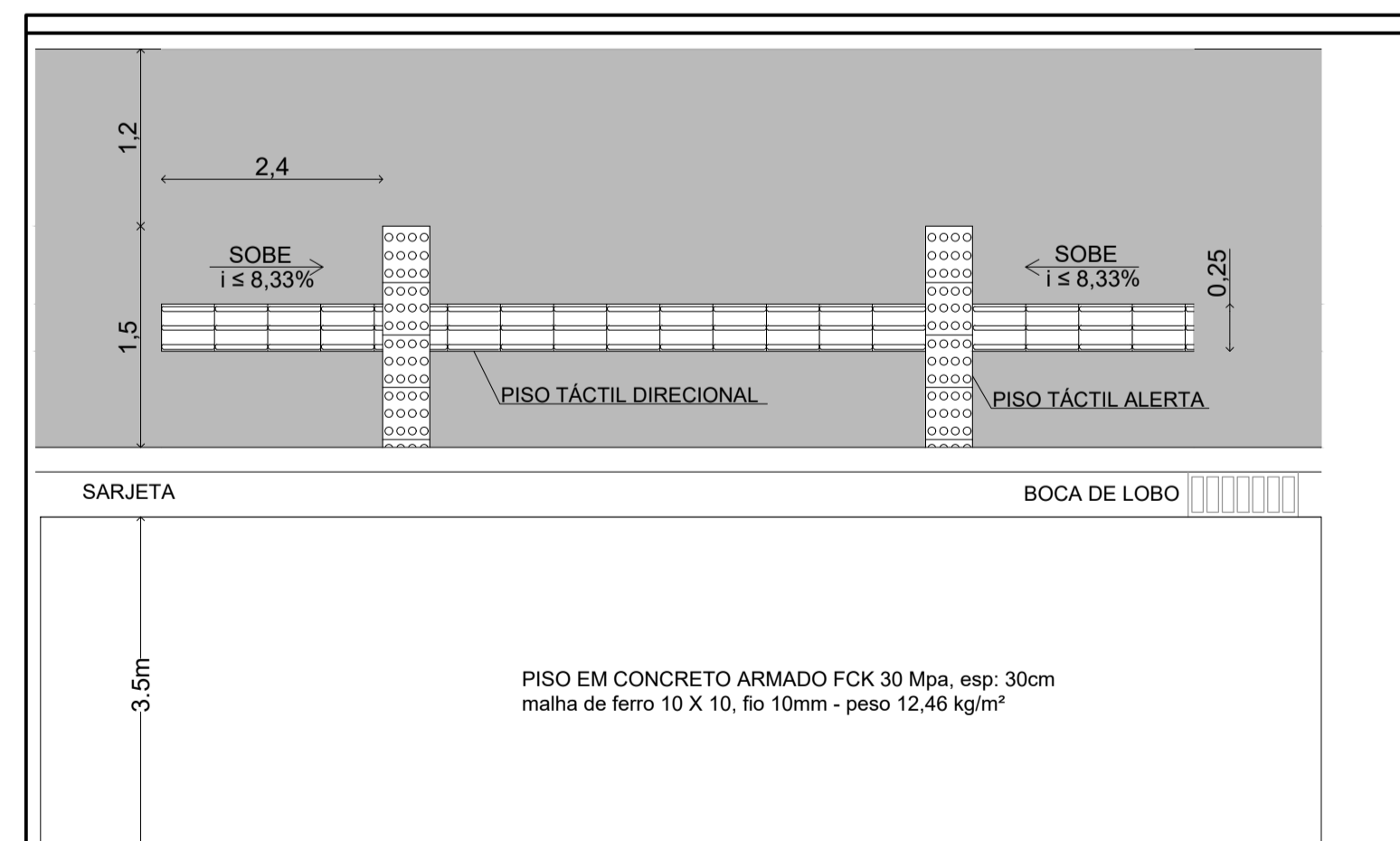
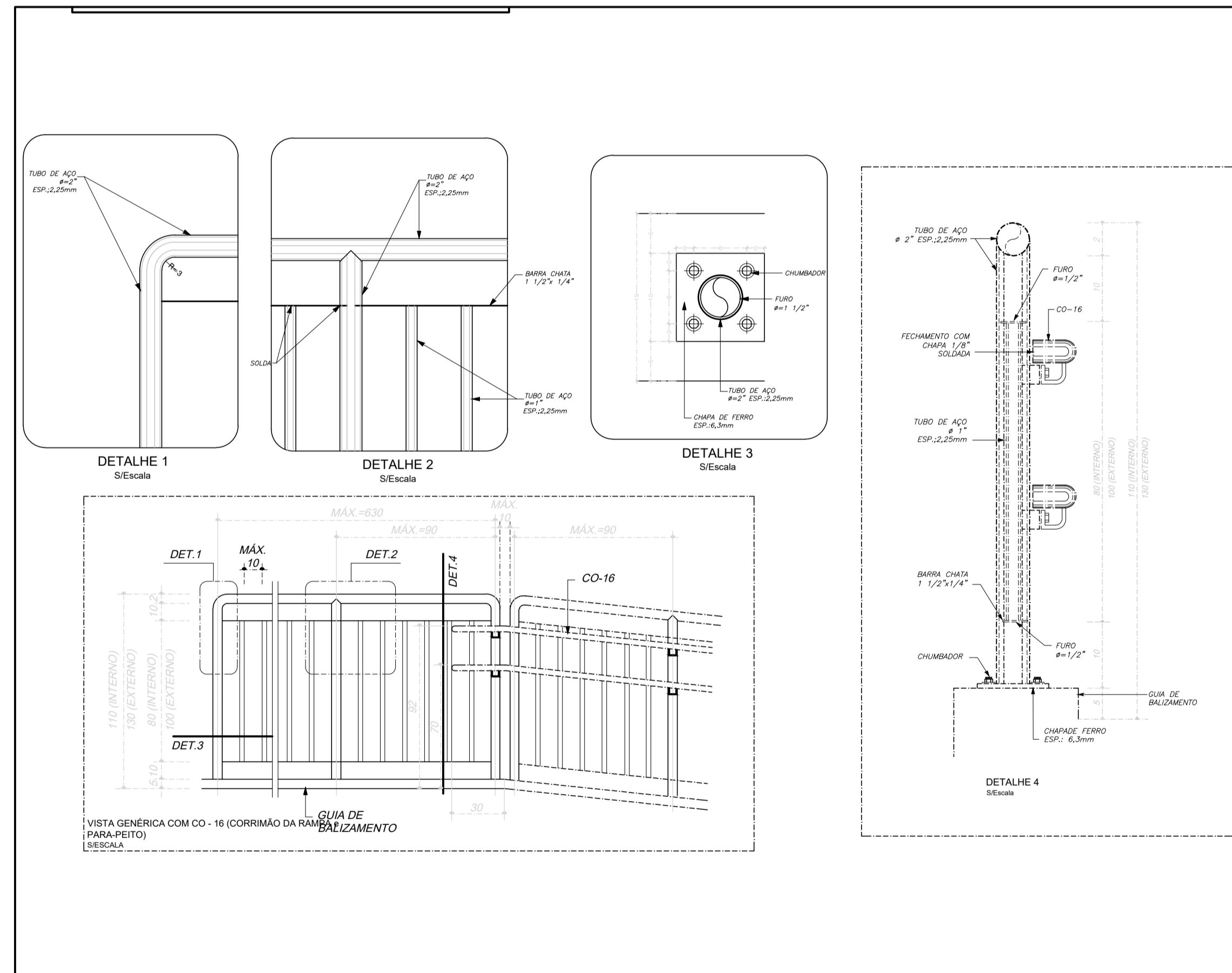
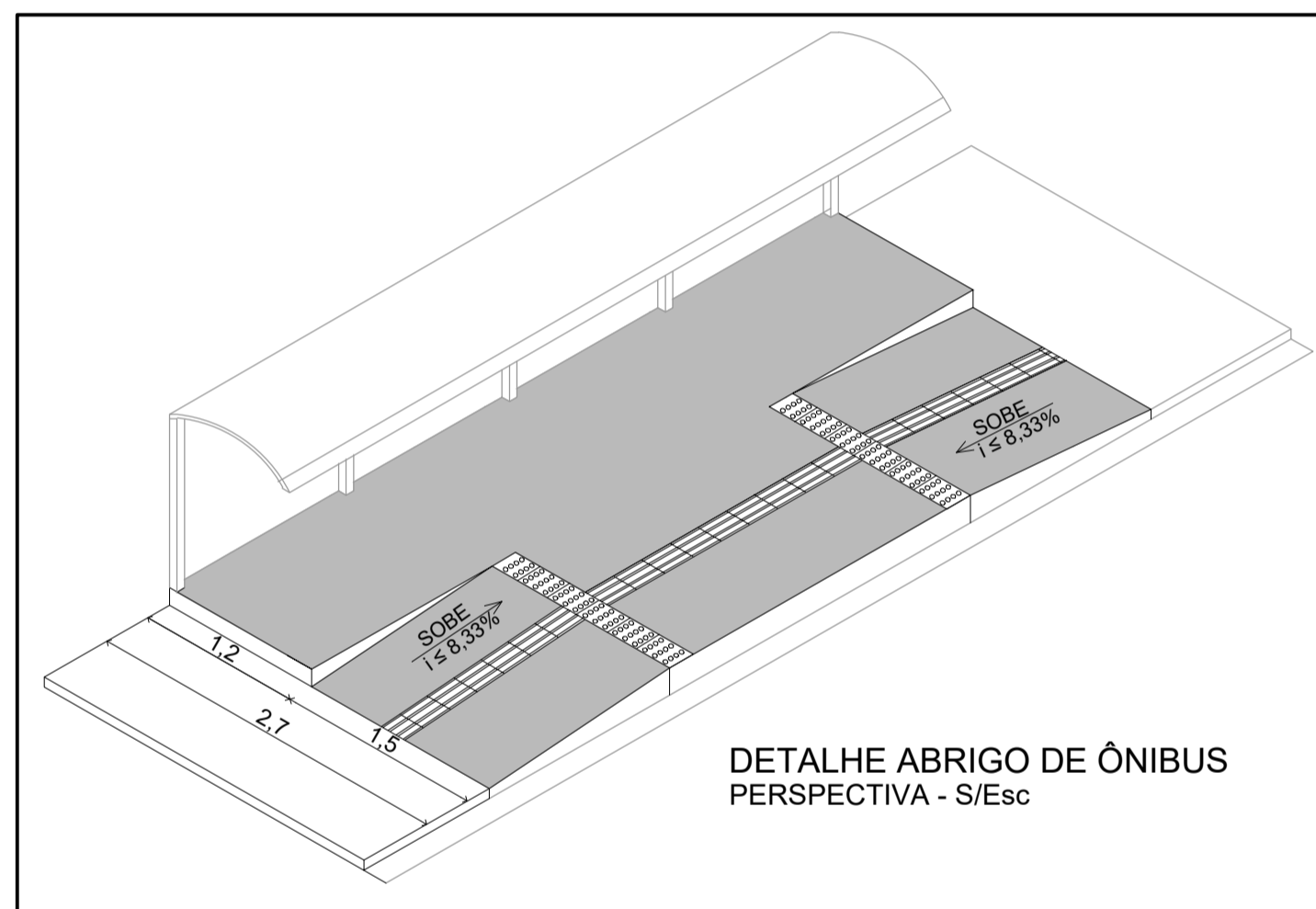
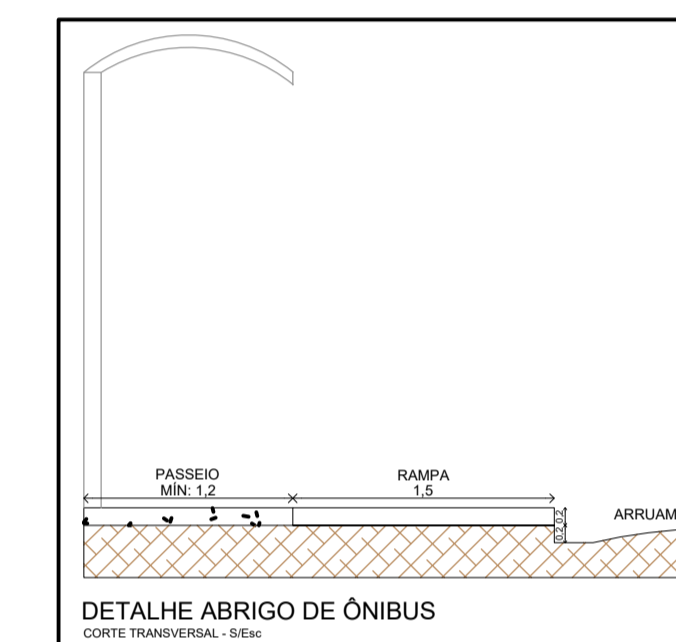
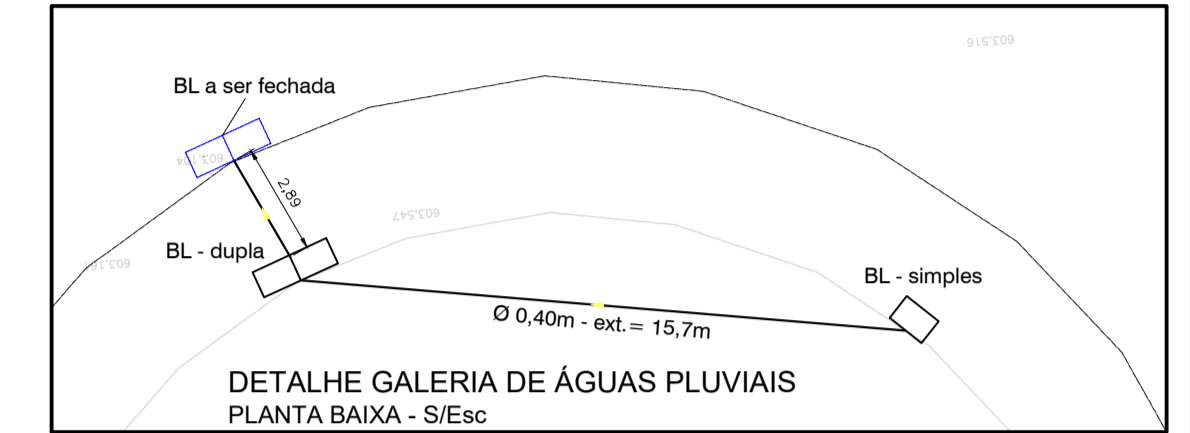
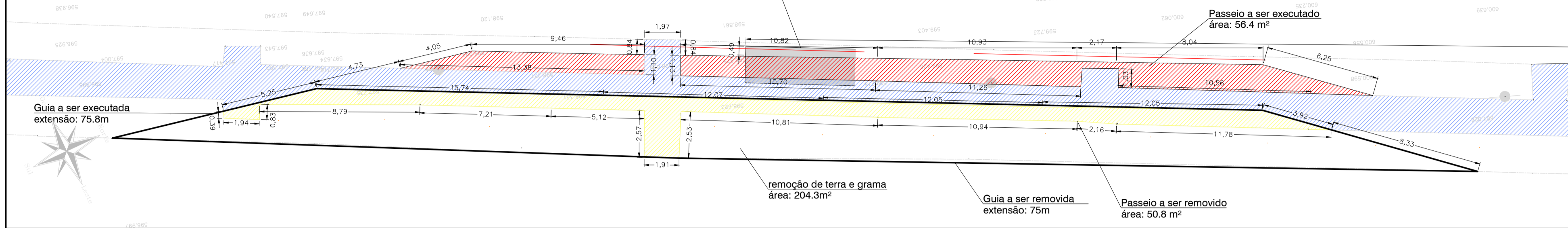


DETALHE BAIJA DE ÔNIBUS
S/Esc

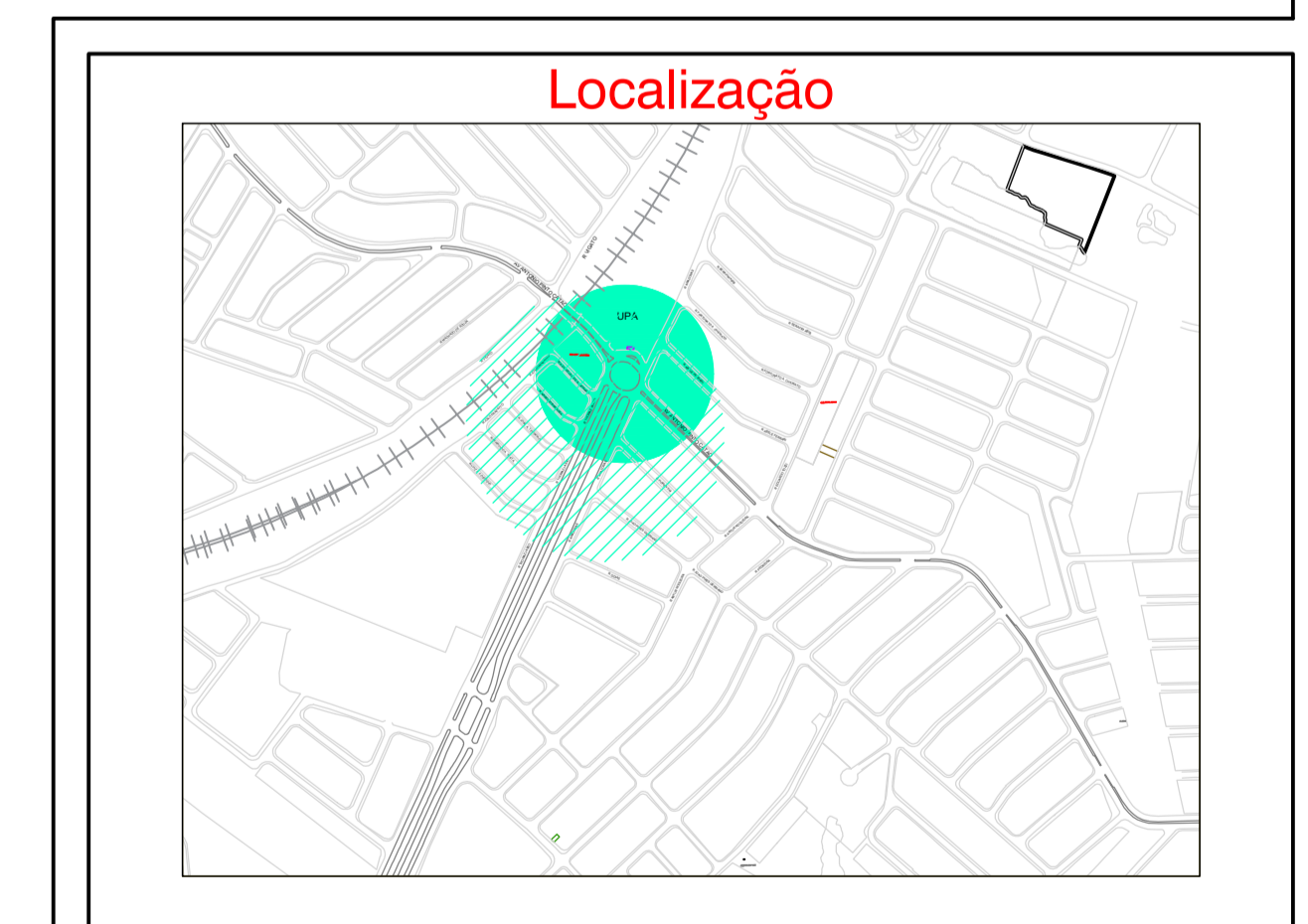
R THOMAZ J

cobertura de ponto de onibus



legenda

- pavimento asfáltico existente
- pavimento concreto a executar
- passeio em concreto a executar
- passeio em concreto existente
- passeio em concreto a demolir
- gradil
- poste
- rampa de acessibilidade a executar



Obs:

SECRETARIA	DEPARTAMENTO		
MOBILIDADE URBANA	ENGENHARIA		
ESCALA	DATA	VISTO	FOLHA/TOTAL
INDICADA	Novembro/2021	Josino Silva	Regis / Samara 3 4

Prefeitura do Município de Jaguariúna
Rua Alfredo Bueno, 1235 - Centro - Jaguariúna-SP - CEP 13820-000-Fone: (019) 3867 9700-Fax (019) 3867 2856

ASSUNTO **Mobilidade Urbana**
Detalhes
AV.Luciano Poltronieri - Balão da UPA