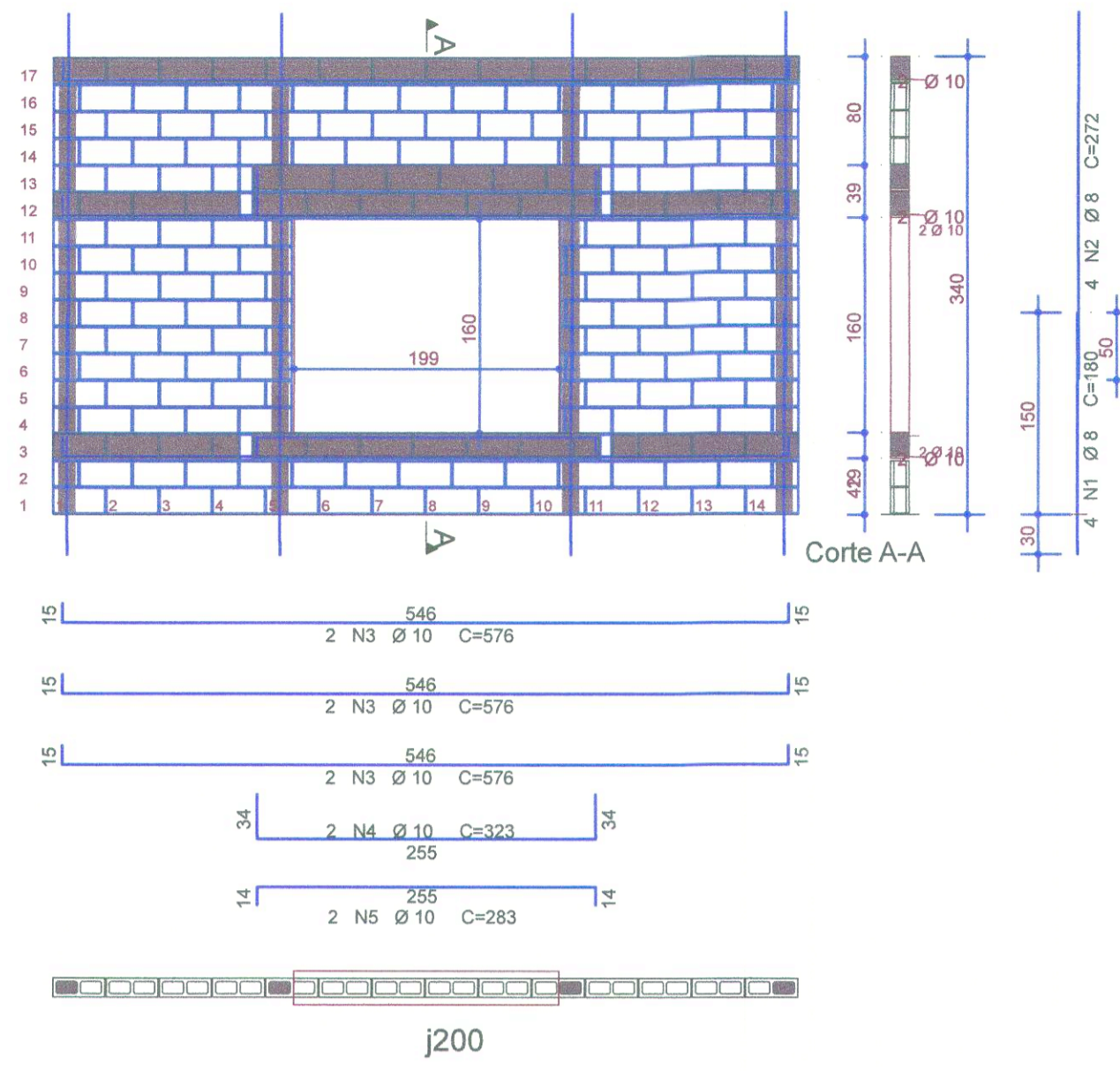
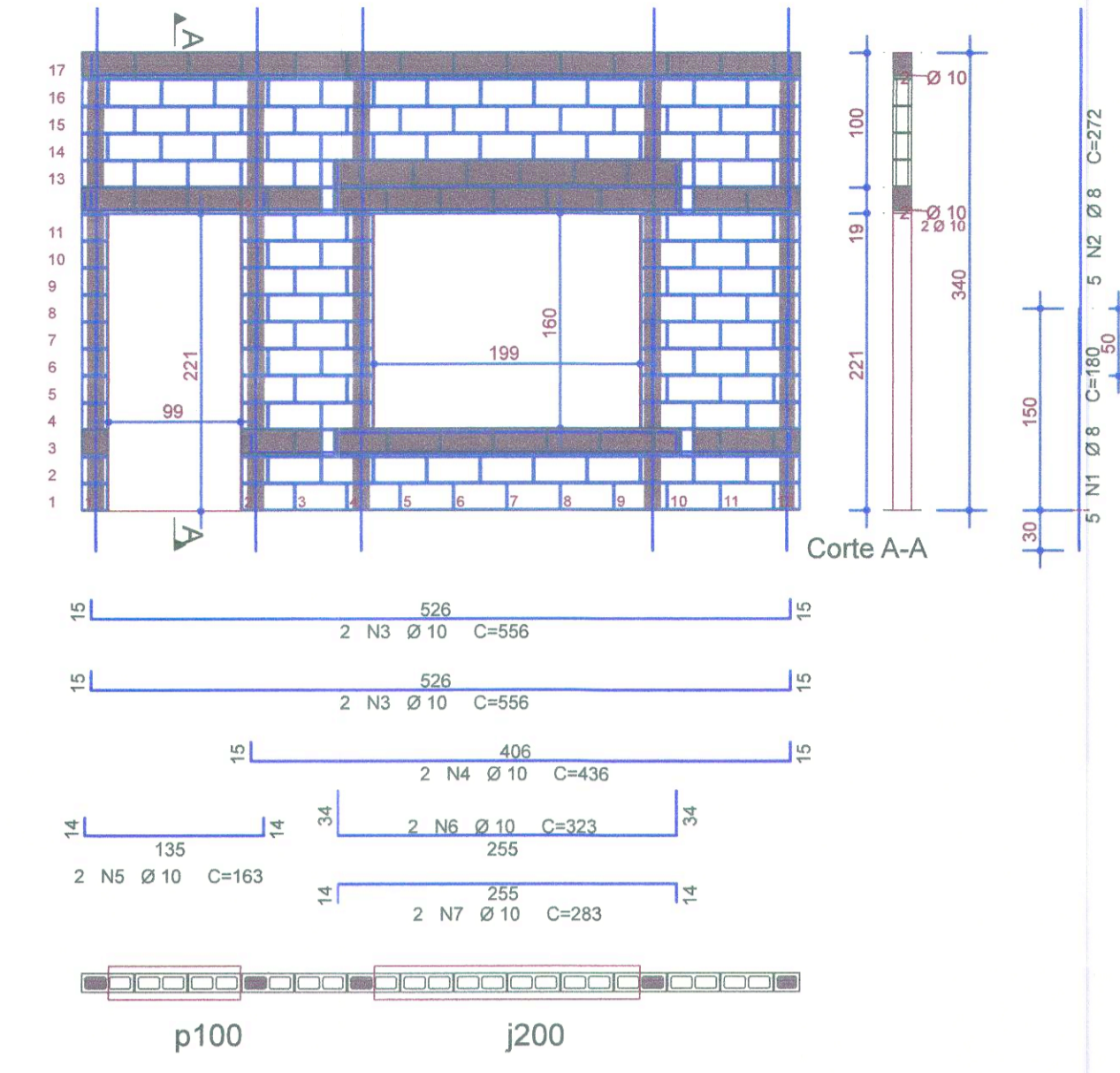


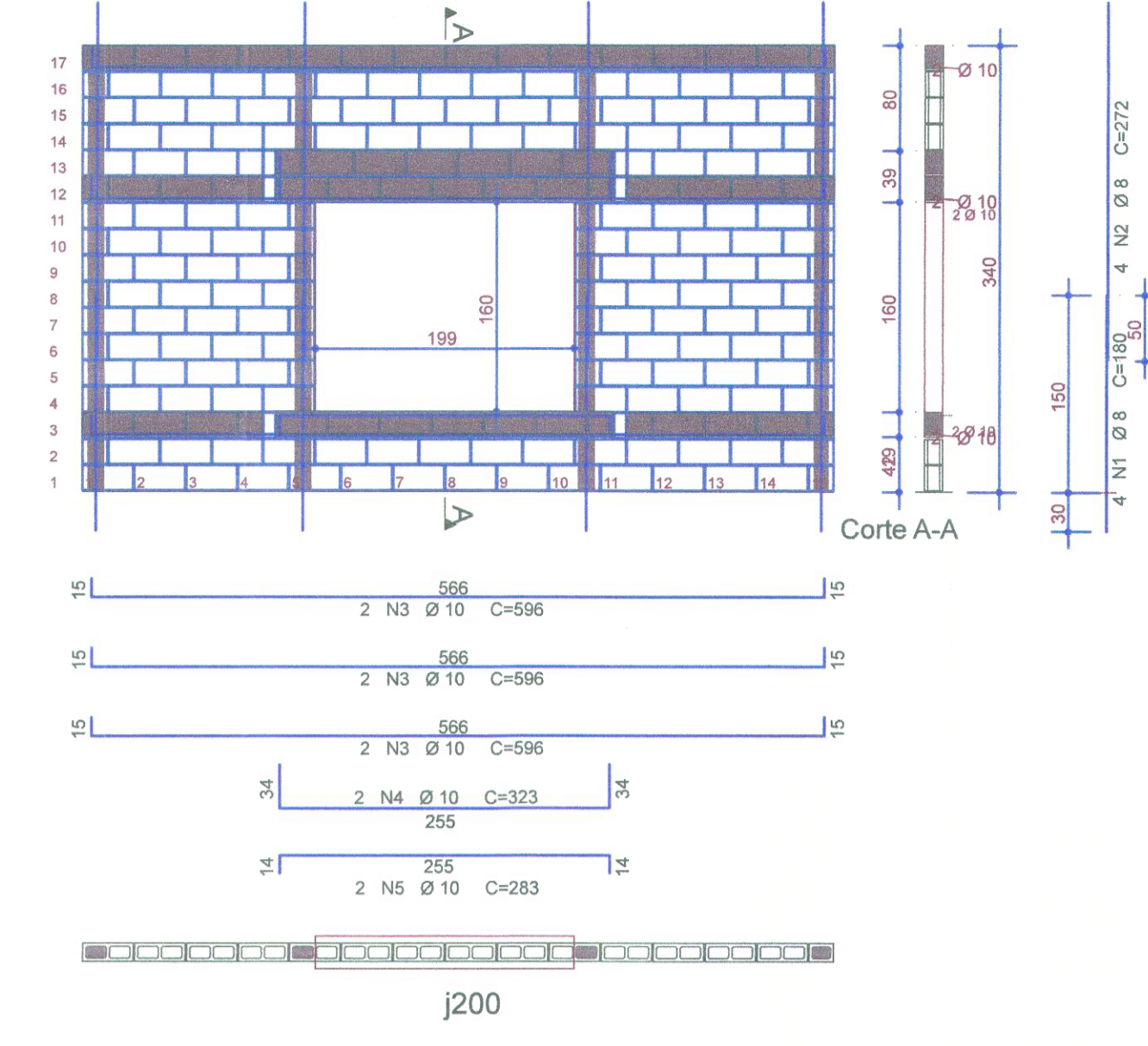
Par1



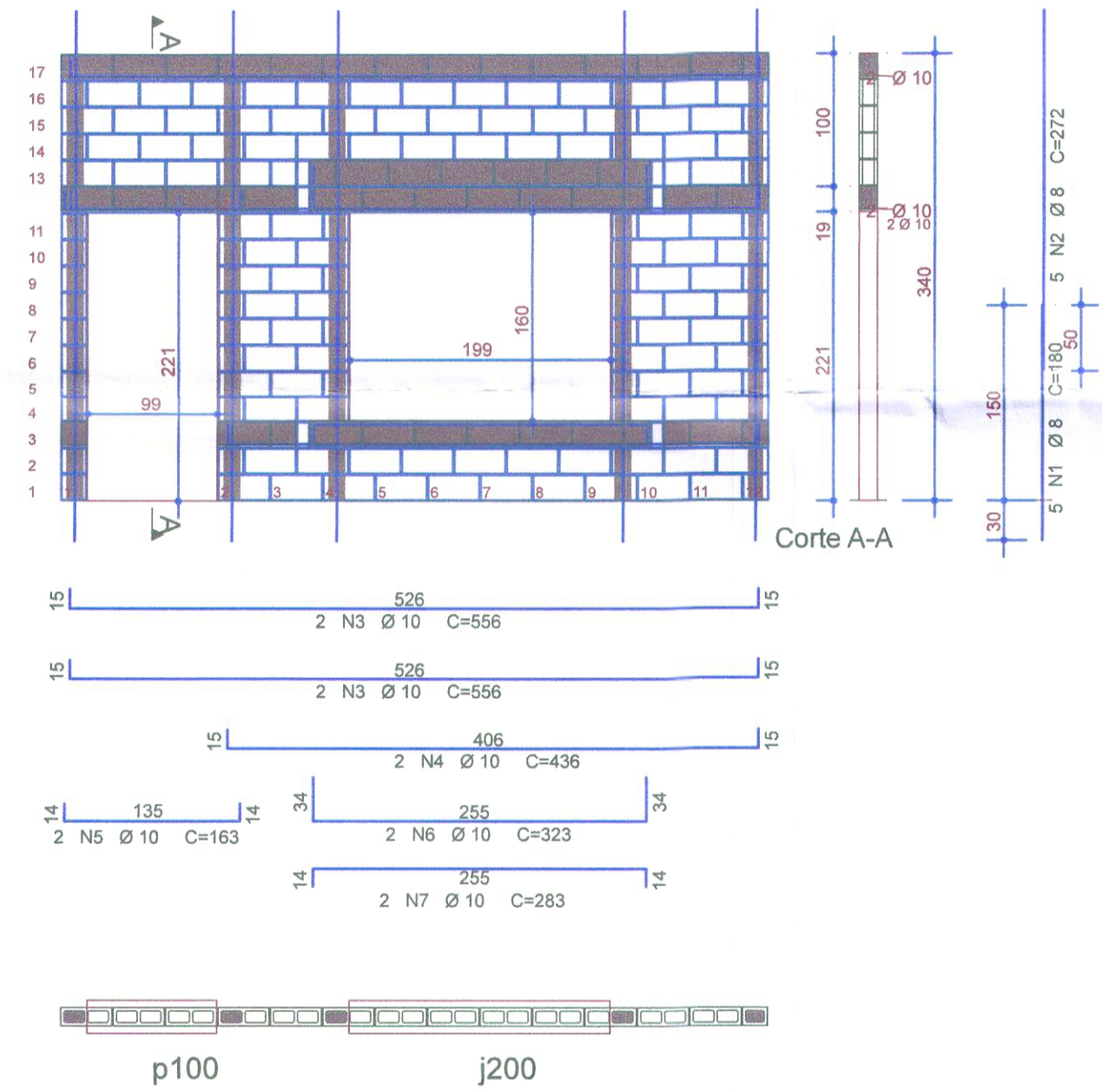
Par2



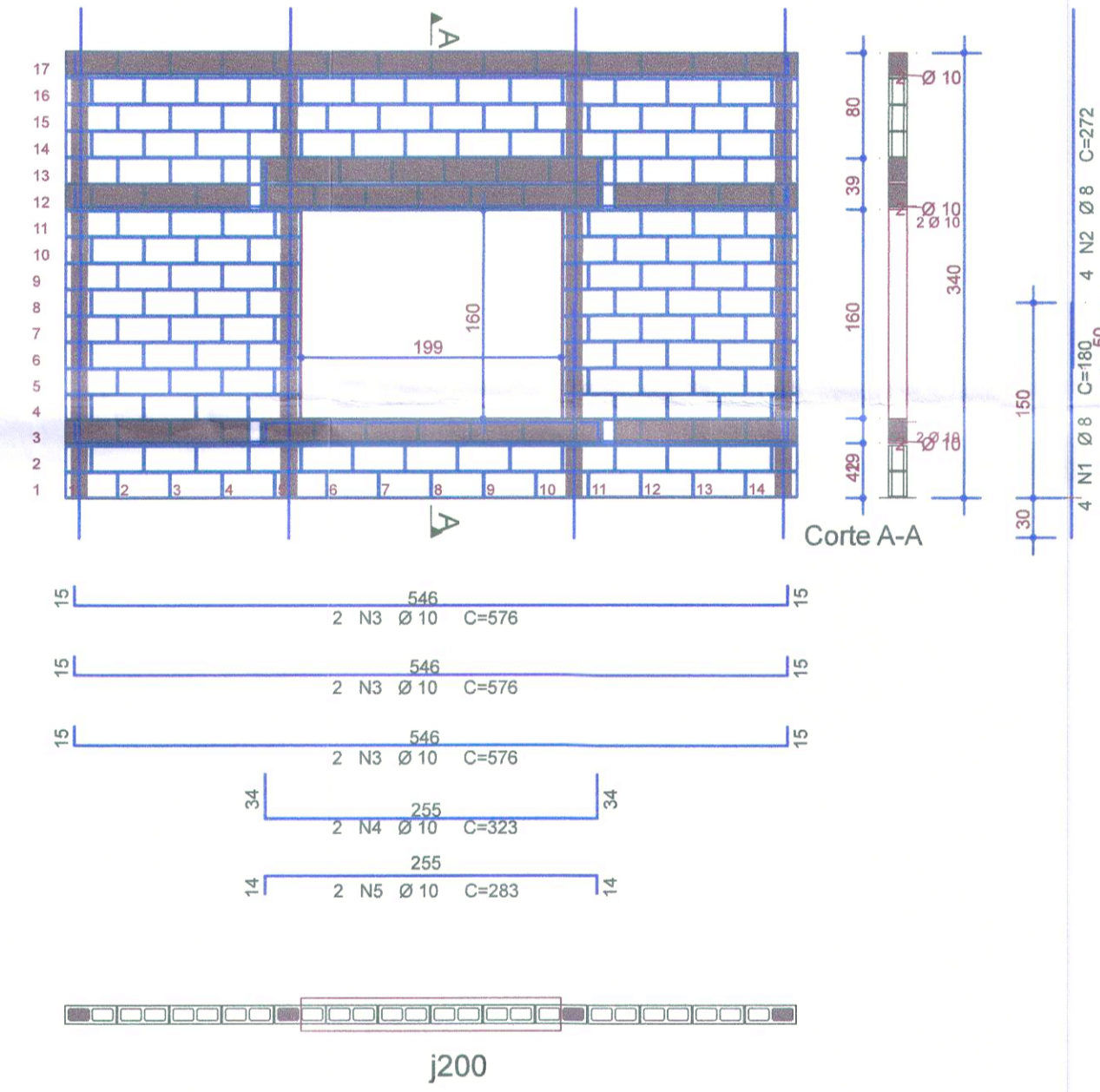
Par3



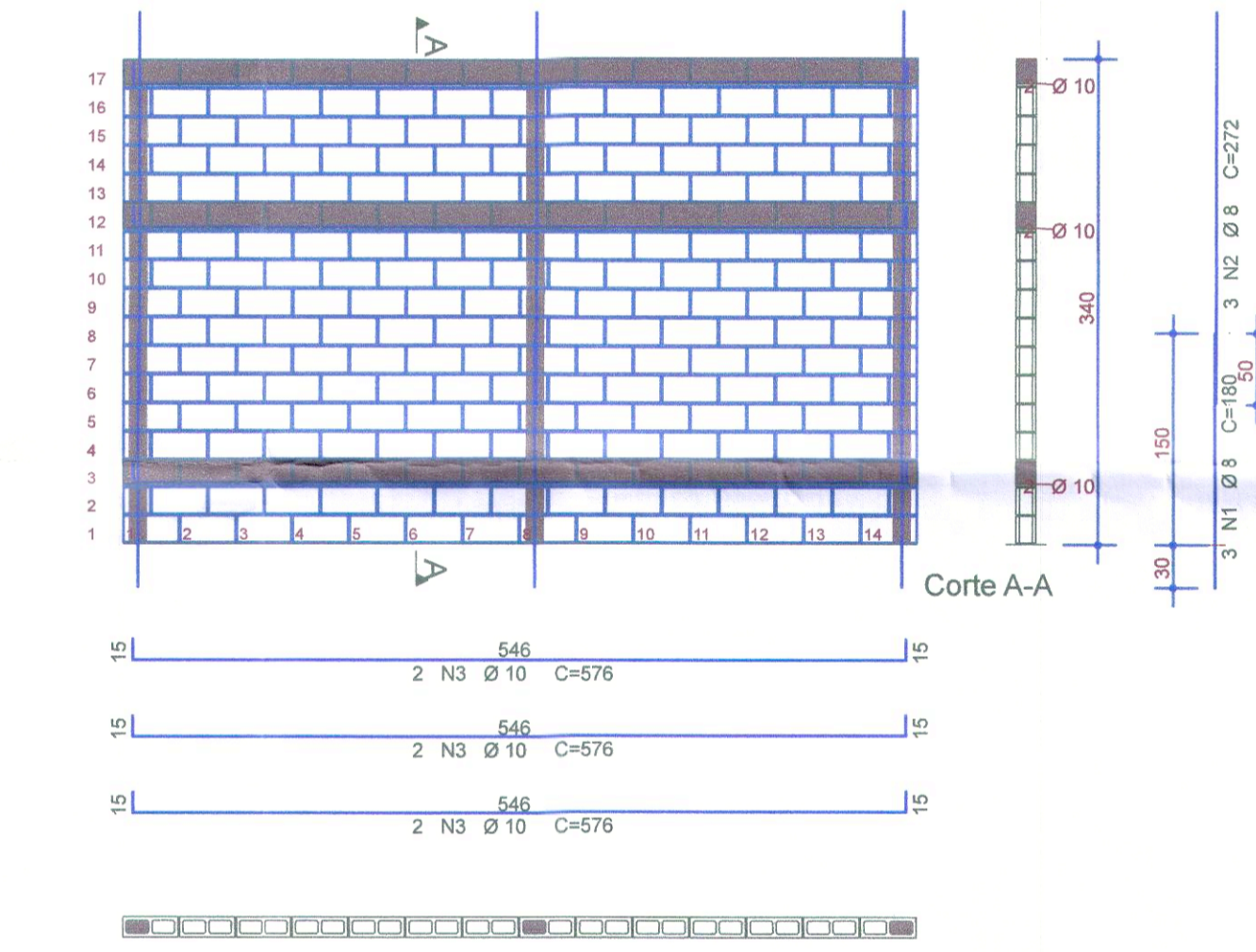
Par4



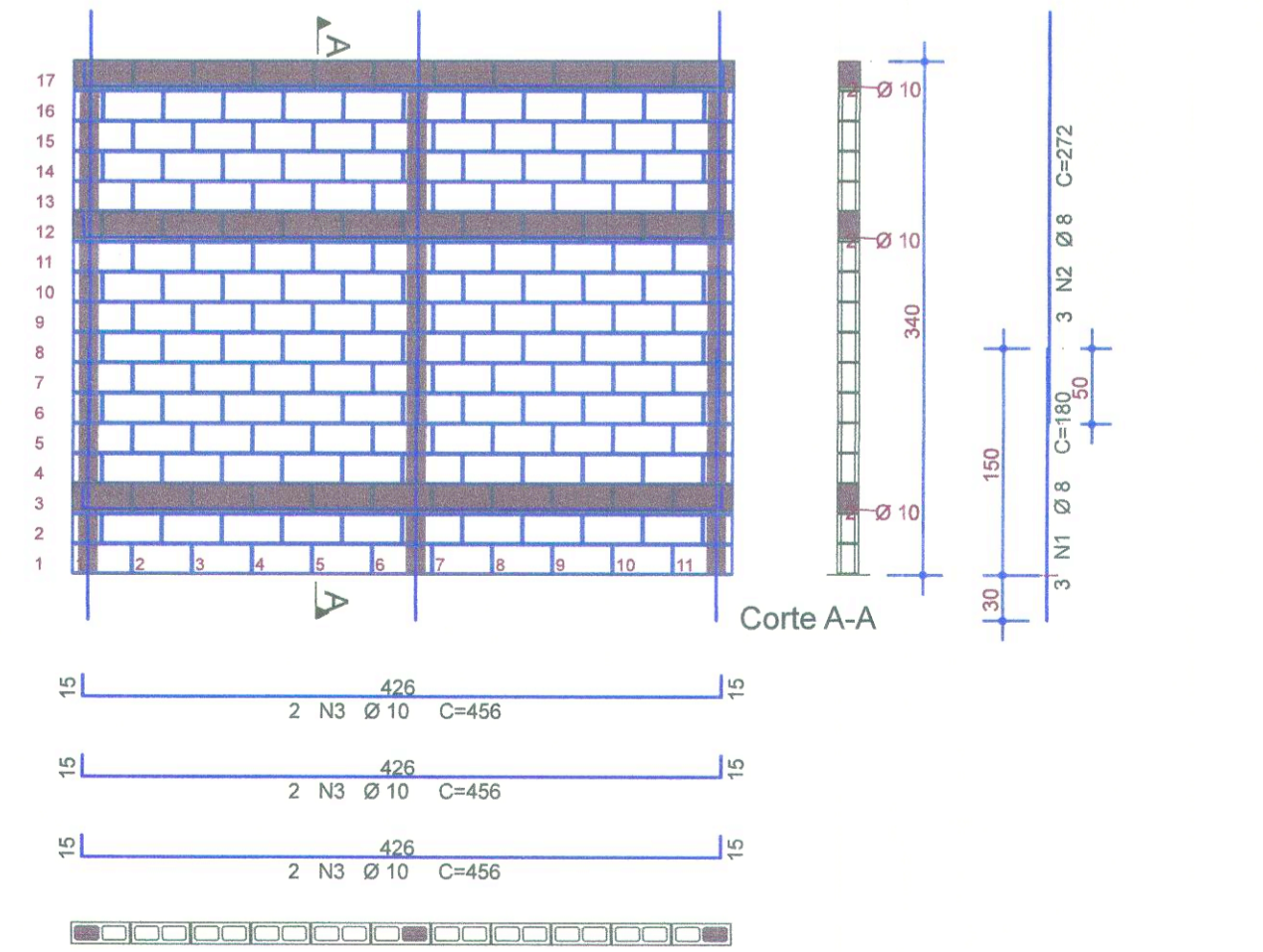
Par5



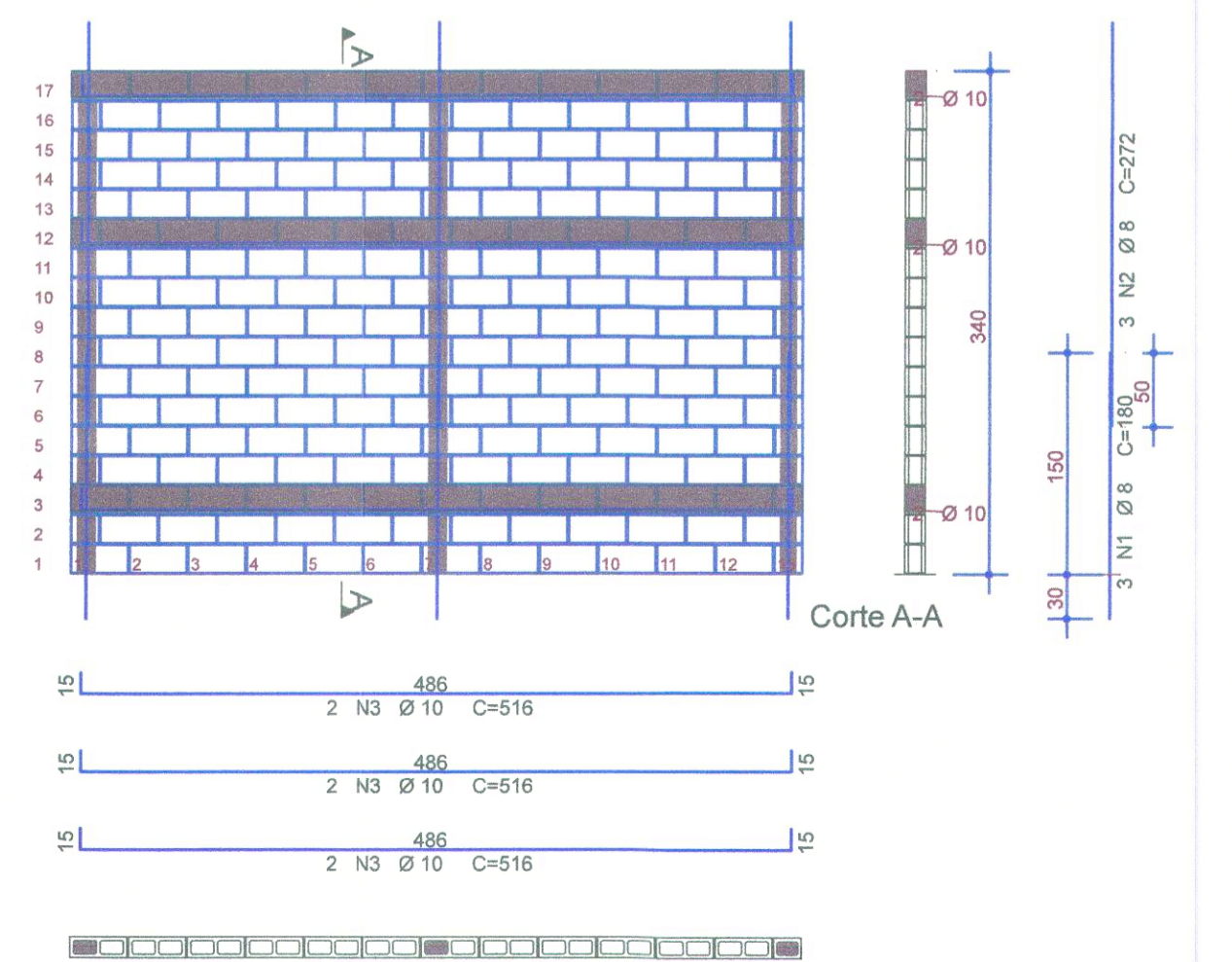
Par6



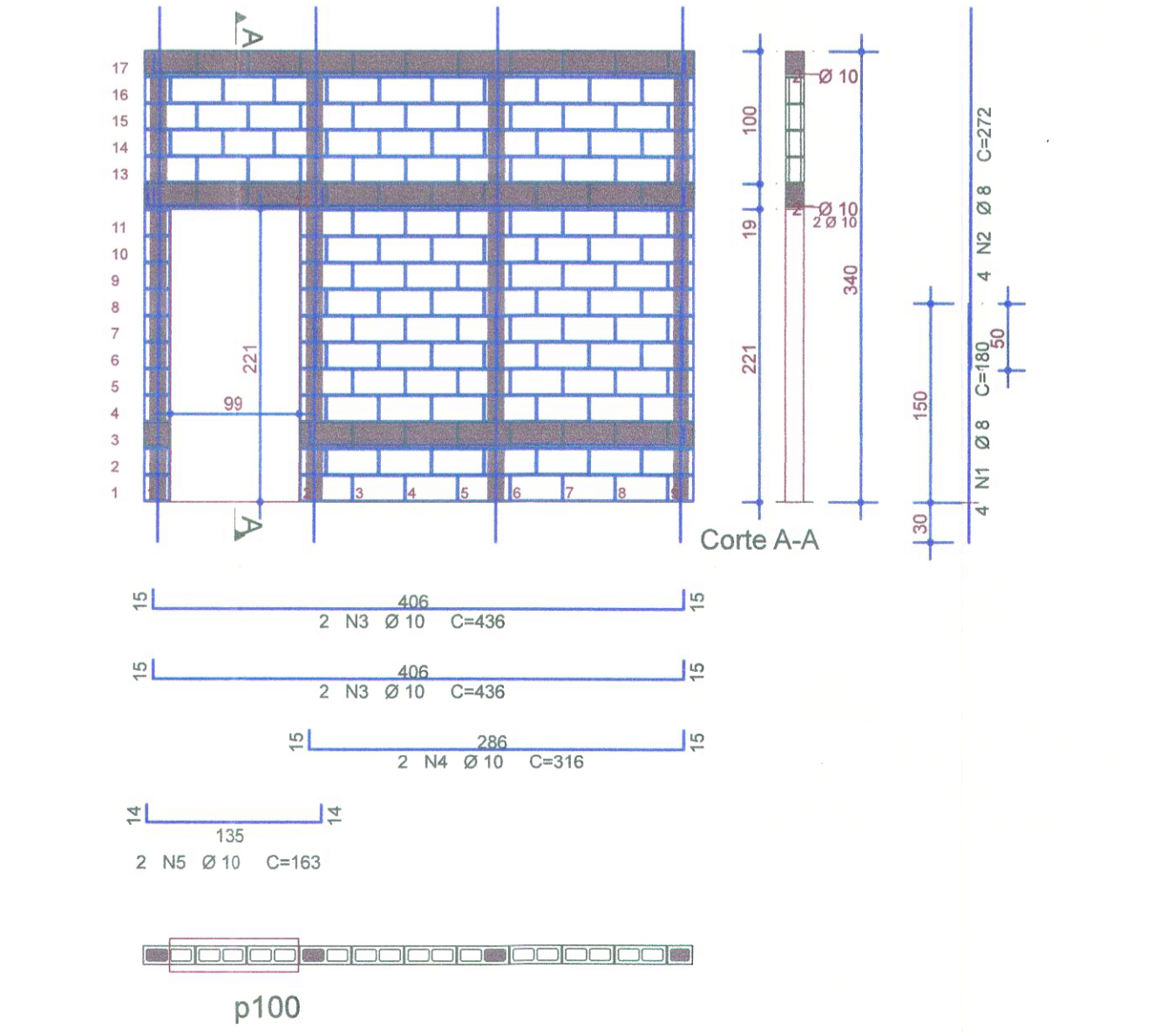
Par7



Par8

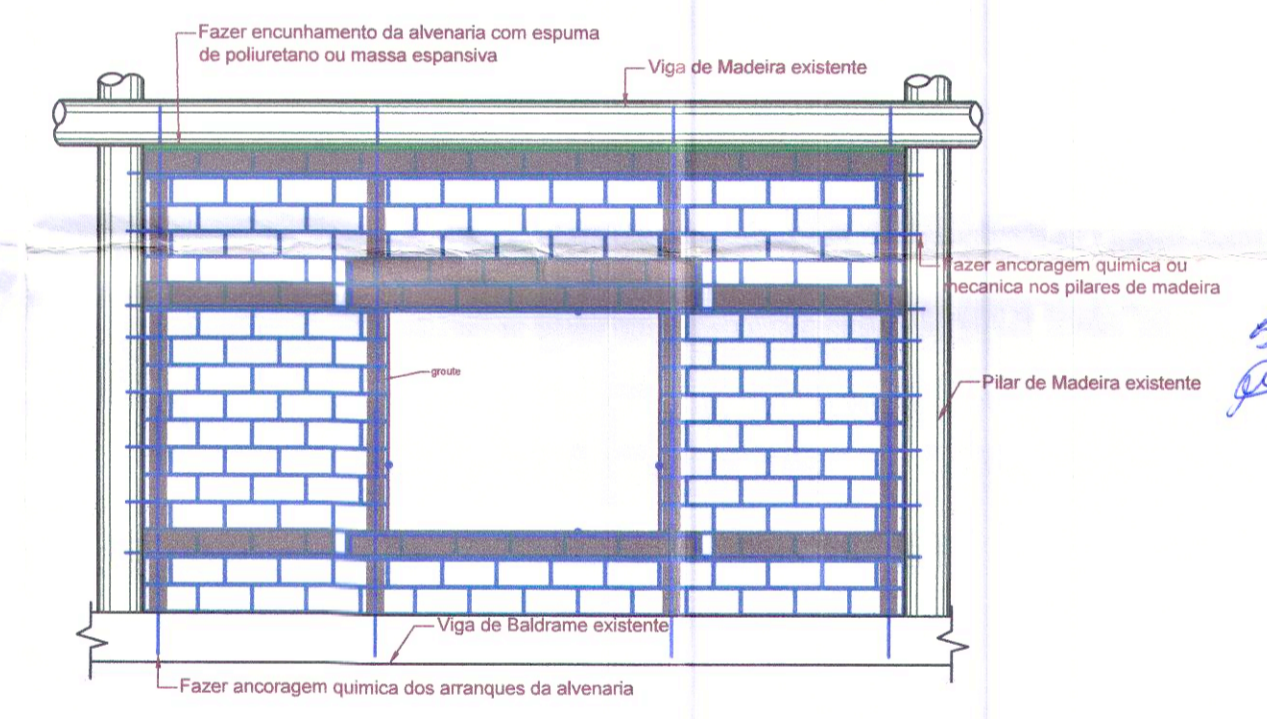


Par9



AÇO	POS	BIT	QUANT	COMPRIMENTO	
				UNIT	TOTAL
		mm		cm	cm
Par1					
50A	1	8	4	180	720
50A	2	8	4	272	1088
50A	3	10	6	576	3456
50A	4	10	2	323	646
50A	5	10	2	283	566
Par2					
50A	1	8	5	180	900
50A	2	8	5	272	1360
50A	3	10	4	556	2224
50A	4	10	2	436	872
50A	5	10	2	163	326
50A	6	10	2	323	646
50A	7	10	2	283	566
Par3					
50A	1	8	4	180	720
50A	2	8	4	272	1088
50A	3	10	6	596	3576
50A	4	10	2	323	646
50A	5	10	2	283	566
Par4					
50A	1	8	5	180	900
50A	2	8	5	272	1360
50A	3	10	4	556	2224
50A	4	10	2	436	872
50A	5	10	2	163	326
50A	6	10	2	323	646
50A	7	10	2	283	566
Par5					
50A	1	8	4	180	720
50A	2	8	4	272	1088
50A	3	10	6	576	3456
50A	4	10	2	323	646
50A	5	10	2	283	566
Par6					
50A	1	8	3	180	540
50A	2	8	3	272	816
50A	3	10	6	576	3456
Par7					
50A	1	8	3	180	540
50A	2	8	3	272	816
50A	3	10	6	456	2736
Par8					
50A	1	8	3	180	540
50A	2	8	3	272	816
50A	3	10	6	516	3096
Par9					
50A	1	8	4	180	720
50A	2	8	4	272	1088
50A	3	10	4	436	1744
50A	4	10	2	316	632
50A	5	10	2	163	326

RESUMO DE AÇO			
AÇO	BIT	COMPR	PESO
	mm	m	kgf
50A	8	158	62
50A	10	354	218
Peso Total	50A =		281 kgf



Detalhe típico de painel de Alvenaria

Thiago Mendes Carraz
Diretor de Patrimônio Histórico

Revisão:	Anotações:	Data:	Observações:

Engenharia e Construções

L.U Moreira Construções LTDA
 CNPJ: 20.337.554/0001-96
 Inscrição municipal: 0090404
 CREA -SP: 2031460

projetos@luengenharia.com.br / contato@luengenharia.com.br
 Tel: (19) 9.973.77072 / 9.9955.7893
 www.luengenharia.com.br

Projeto Estrutural

Assunto:
ELEVAÇÃO DE ALVENARIA PAREDES 1 A 9

LOCAL: ESCOLA DAS ARTES, PARQUE DOS LAGOS, LAGO 3 - JAGUARIUNA/SP

PROPRIETARIO: PREFEITURA DO MUNICÍPIO DE JAGUARIUNA

AUTOR E RESPONSÁVEL TÉCNICO: **Ulisses Moreira de Souza**
 Engenheiro Civil CREA.SP: 5069614526

Adriano Luis de Silva
Diretor Administrativo
Responsável interno pela
Secretaria de Turismo e Cultura

ESCALA: 1/50

CARACTERÍSTICAS MATERIAIS DA ALVENARIA: fbk=4.0, fpk=3.2, fo=4.0, fgk= 15.00 MPa

DATA: 02/06/2022

FOLHA: 02/03