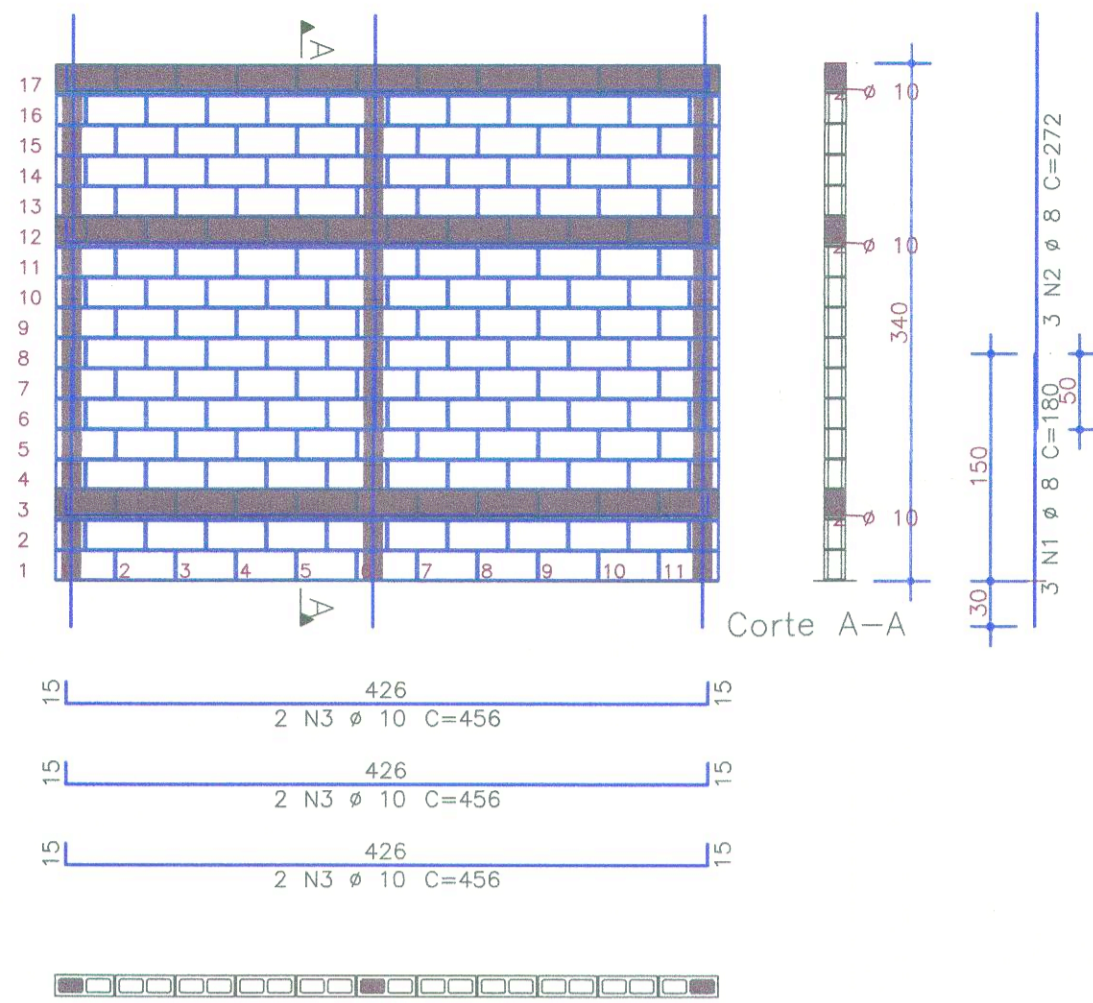
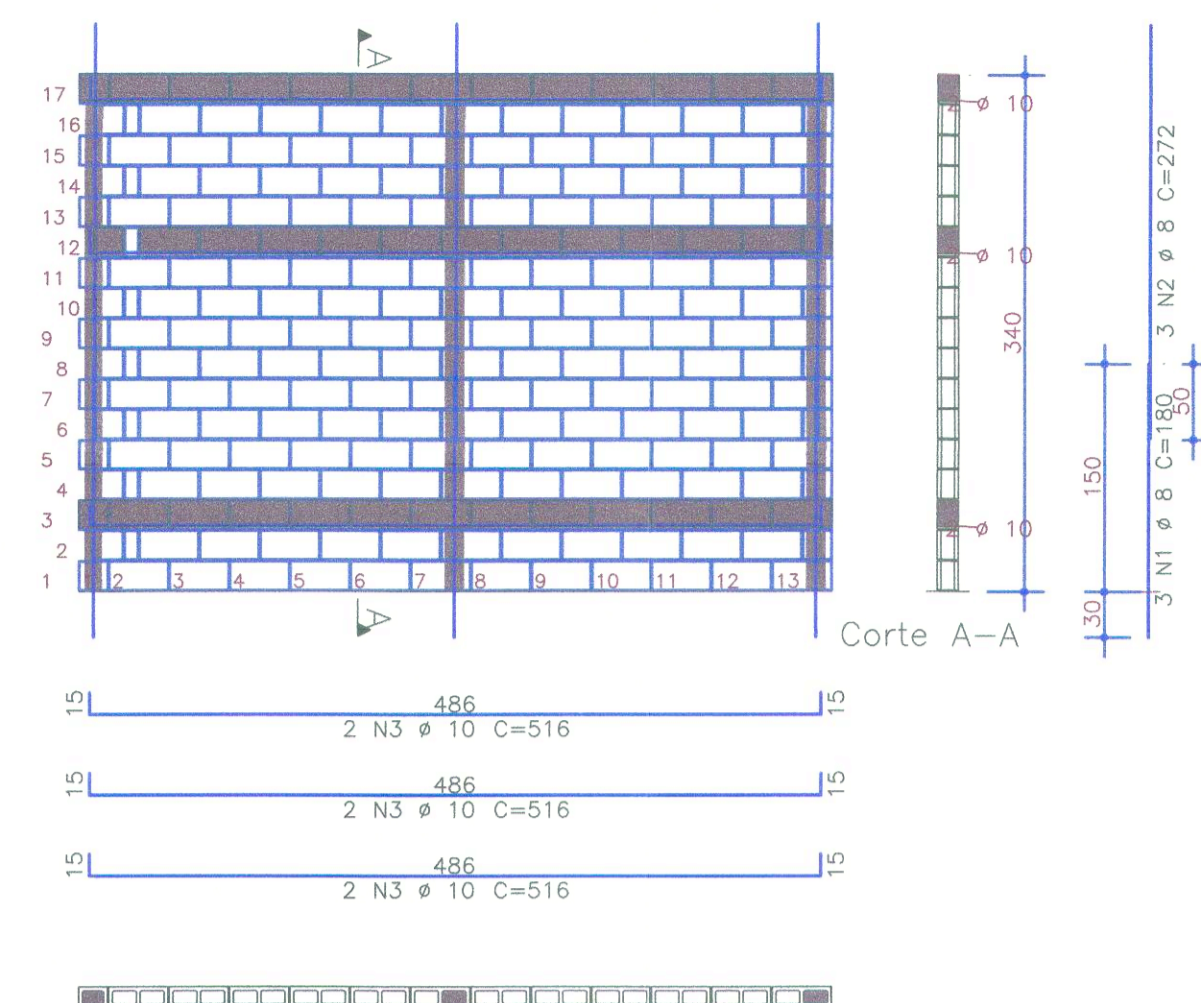


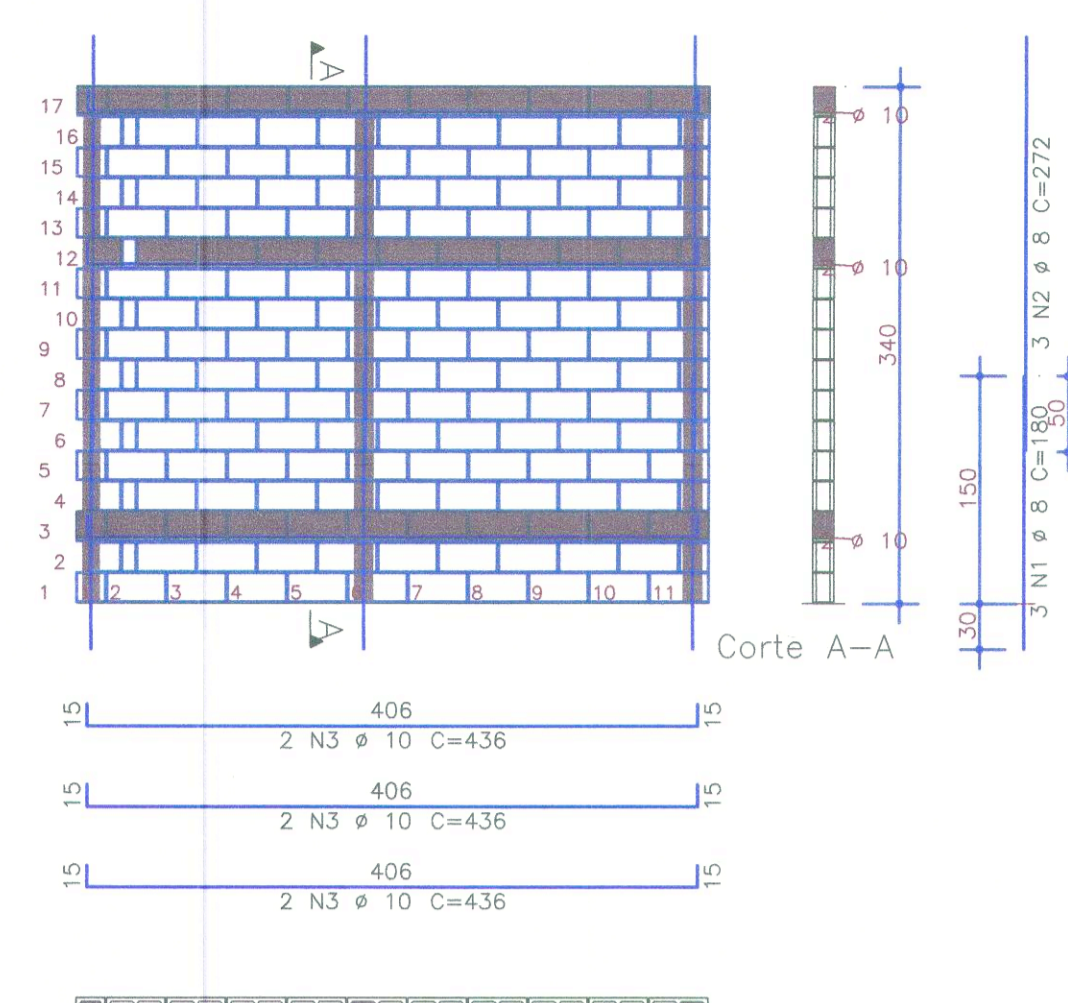
Par10



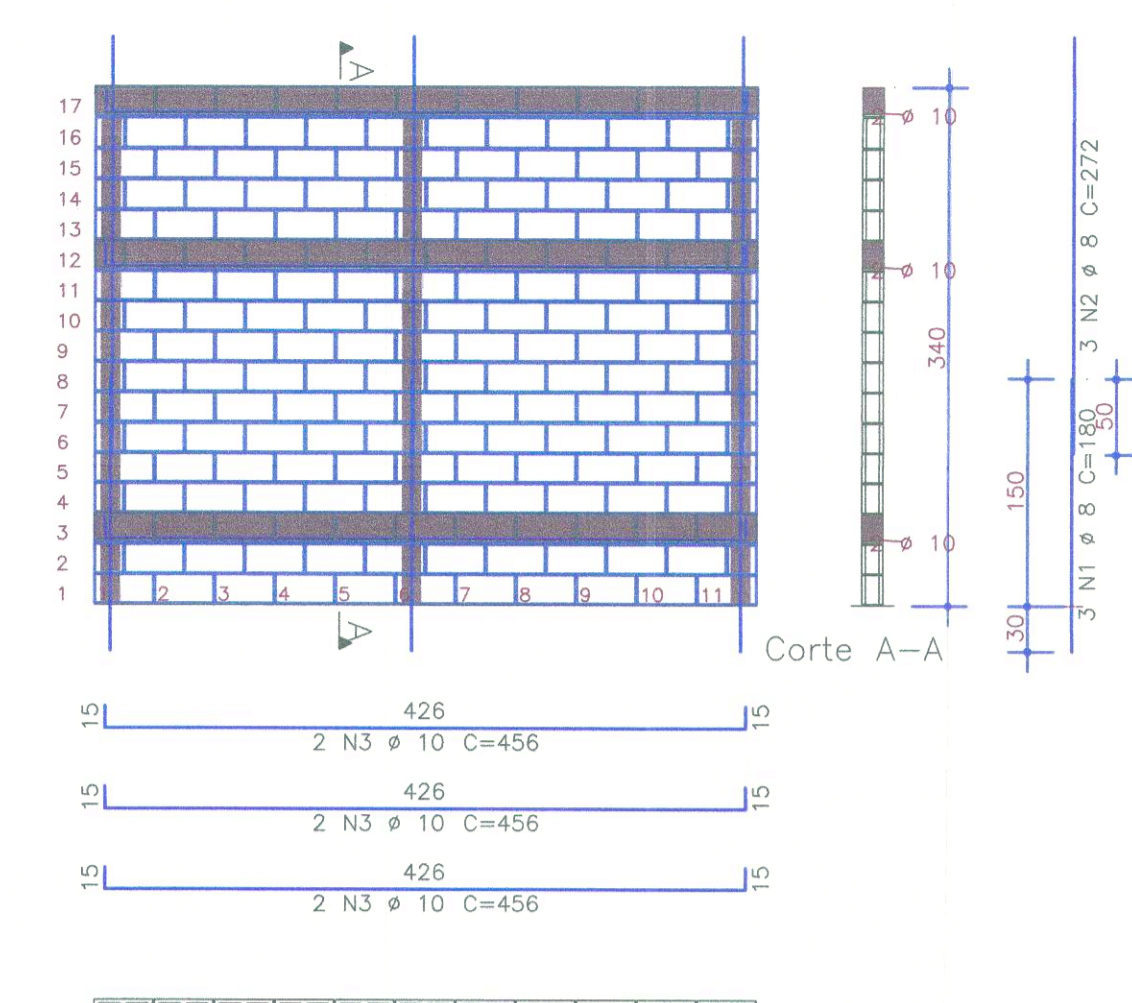
Par11



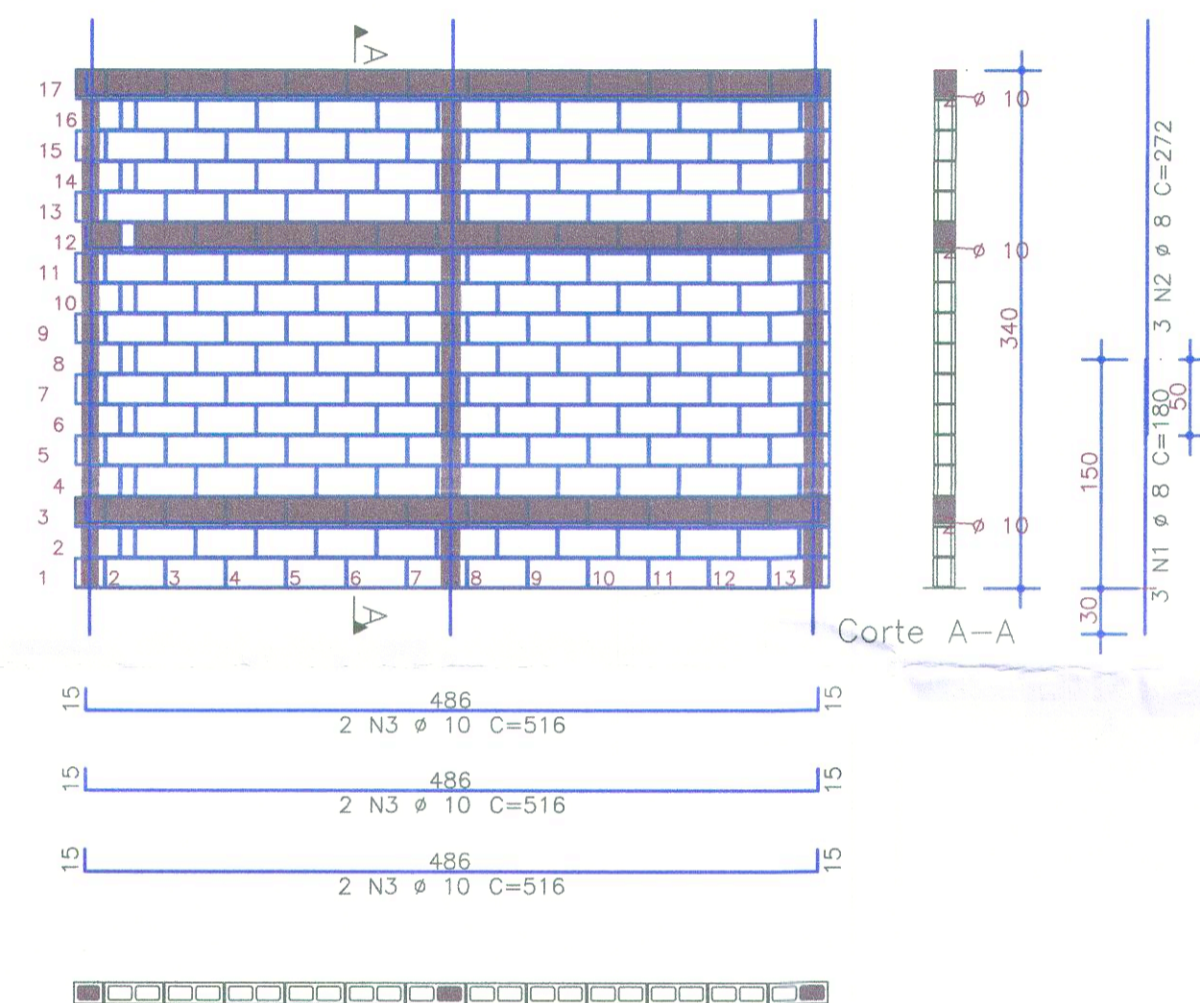
Par12



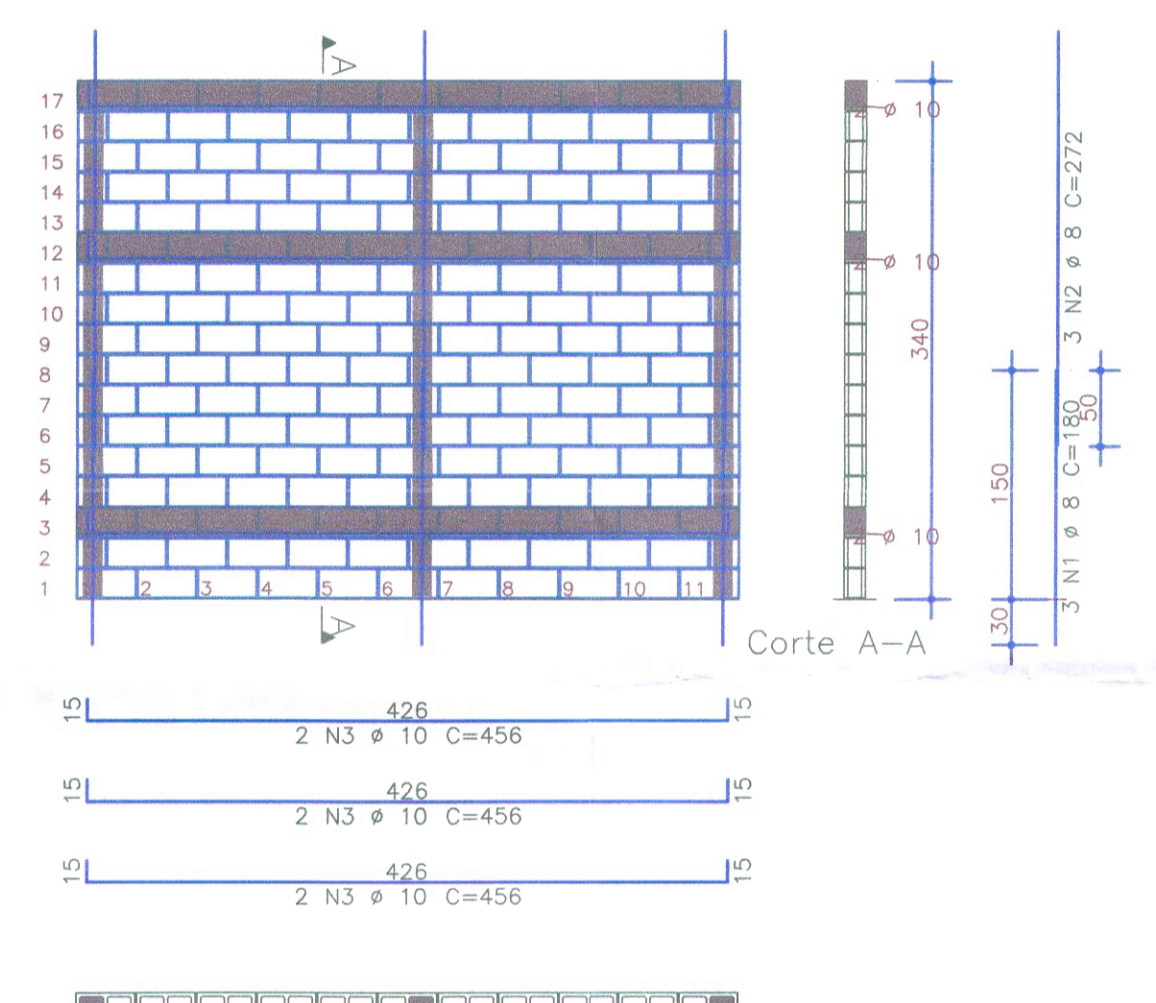
Par13



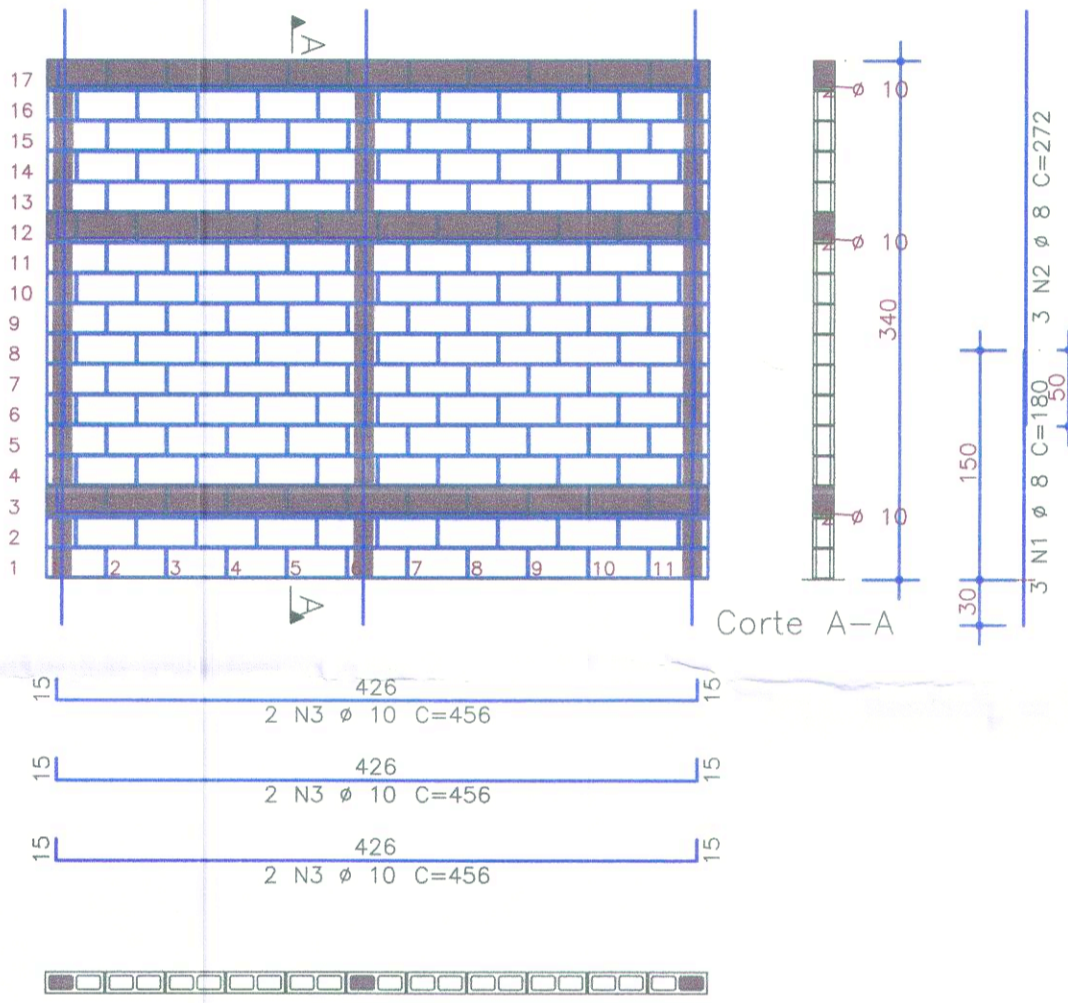
Par14



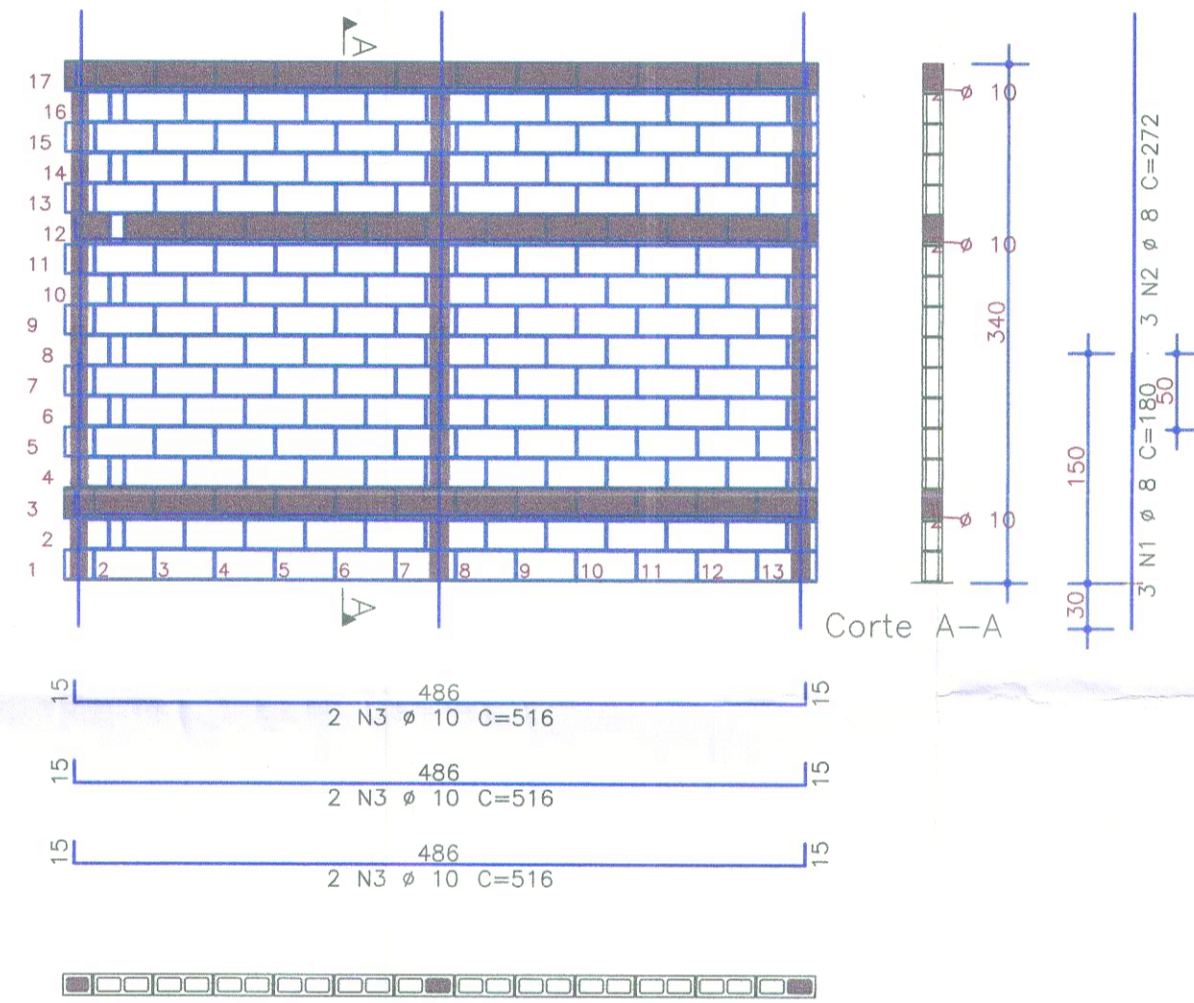
Par15



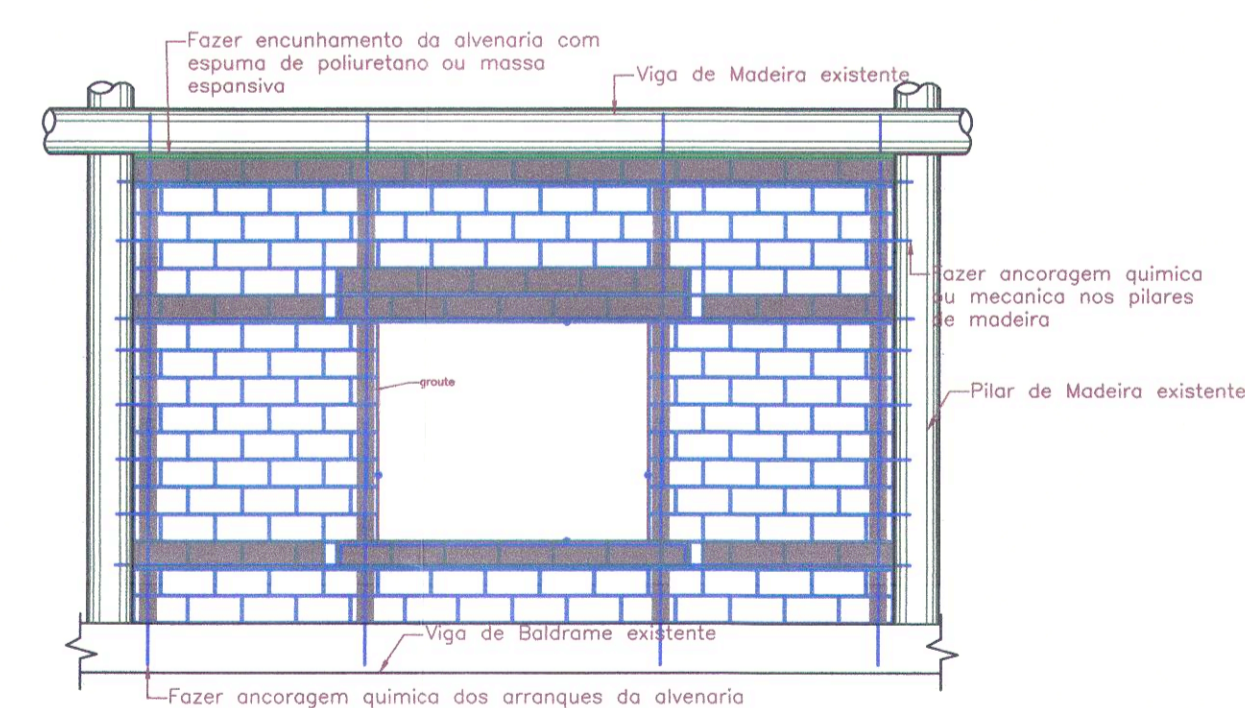
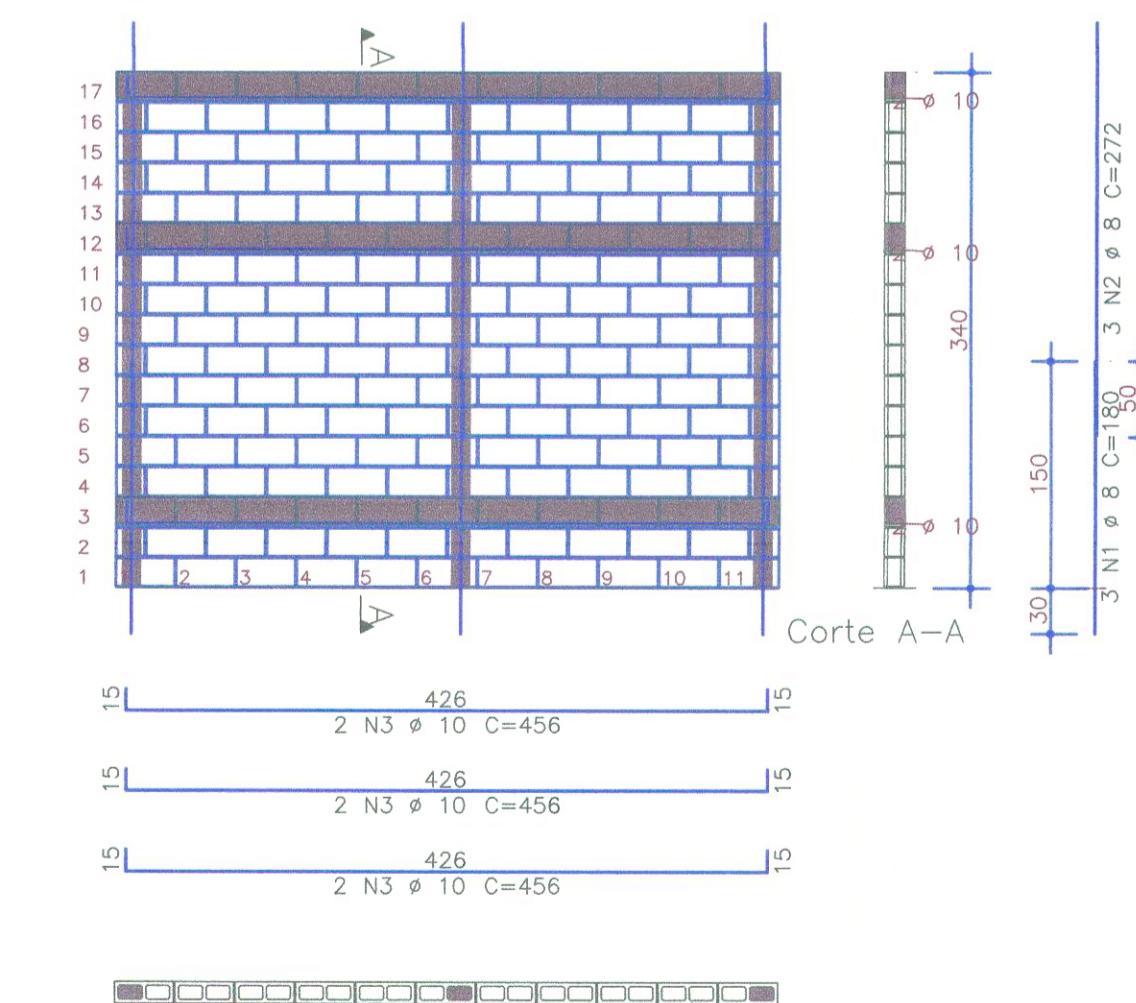
Par16



Par17



Par18



Detalhe típico de painel de Alvenaria

AÇO	POS	BIT	QUANT	COMPRIIMENTO	
				UNIT	TOTAL
		mm		cm	cm
Par10					
50A	1	8	3	180	540
50A	2	8	3	272	816
50A	3	10	6	456	2736
Par11					
50A	1	8	3	180	540
50A	2	8	3	272	816
50A	3	10	6	516	3096
Par12					
50A	1	8	3	180	540
50A	2	8	3	272	816
50A	3	10	6	436	2616
Par13					
50A	1	8	3	180	540
50A	2	8	3	272	816
50A	3	10	6	456	2736
Par14					
50A	1	8	3	180	540
50A	2	8	3	272	816
50A	3	10	6	516	3096
Par15					
50A	1	8	3	180	540
50A	2	8	3	272	816
50A	3	10	6	456	2736
Par16					
50A	1	8	3	180	540
50A	2	8	3	272	816
50A	3	10	6	456	2736
Par17					
50A	1	8	3	180	540
50A	2	8	3	272	816
50A	3	10	6	516	3096
Par18					
50A	1	8	3	180	540
50A	2	8	3	272	816
50A	3	10	6	456	2736

RESUMO DE AÇO				
AÇO	BIT	COMPR	PESO	
	mm	m	kgf	
50A	8	122	48	
50A	10	256	158	
Peso Total			50A =	206 kgf

Thiago Menezes Garcia  
Diretor de Patrimônio Histórico

Revisão:	Anotações:	Data:	Observações:

Engenharia e Construções

L.U Moreira Construções LTDA  
CNPJ: 20.337.554/0001-96  
Inscrição municipal: 0090404  
CREA -SP: 2031460

projetos@luengenharia.com.br / contato@luengenharia.com.br  
Tel: (19) 9.973.7702 / 9.9959.7893  
www.luengenharia.com.br

TÍTULO

# Projeto Estrutural

Assunto:

## ELEVAÇÃO DE ALVENARIA PAREDES 10 A 18

LOCAL

ESCOLA DAS ARTES, PARQUE DOS LAGOS, LAGO 3 - JAGUARIUNA/SP

PROPRIETARIO

PREFEITURA DO MUNICÍPIO DE JAGUARIUNA

AUTOR E RESPONSÁVEL TÉCNICO

Adriano Luís da Silva  
Diretor Administrativo  
Responsável Interino pela Secretaria de Turismo e Cultura

Ulisses Moreira de Souza  
Engenheiro Civil CREA-SP: 50847/0-0

ESCALA

1/50

CARACTERÍSTICAS MATERIAIS DA ALVENARIA

fbk=4.0, fpk=3.2, fa=4.0, fgk= 15.00 MPa

DATA

02/06/2022

FOLHA

03/03