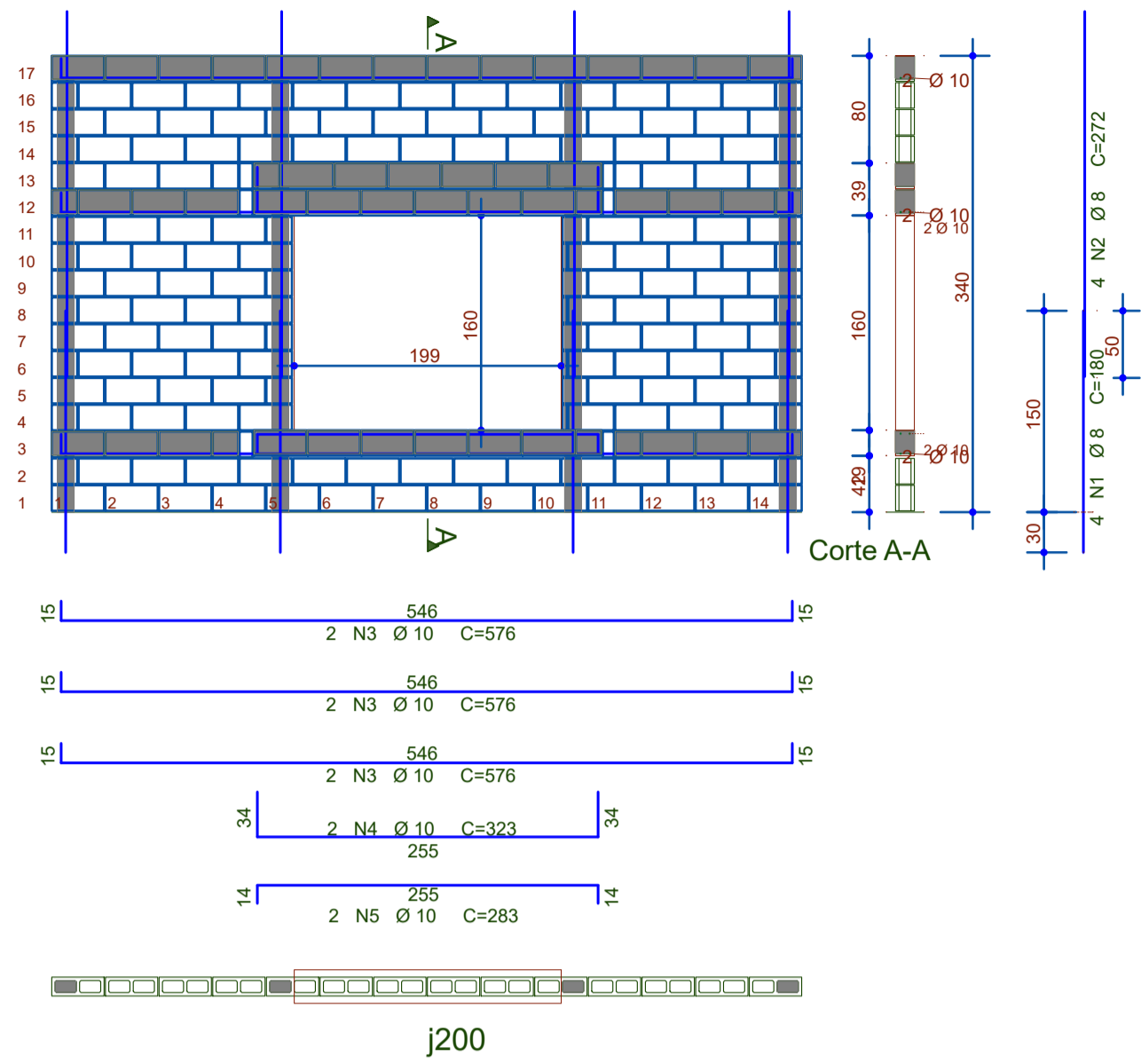
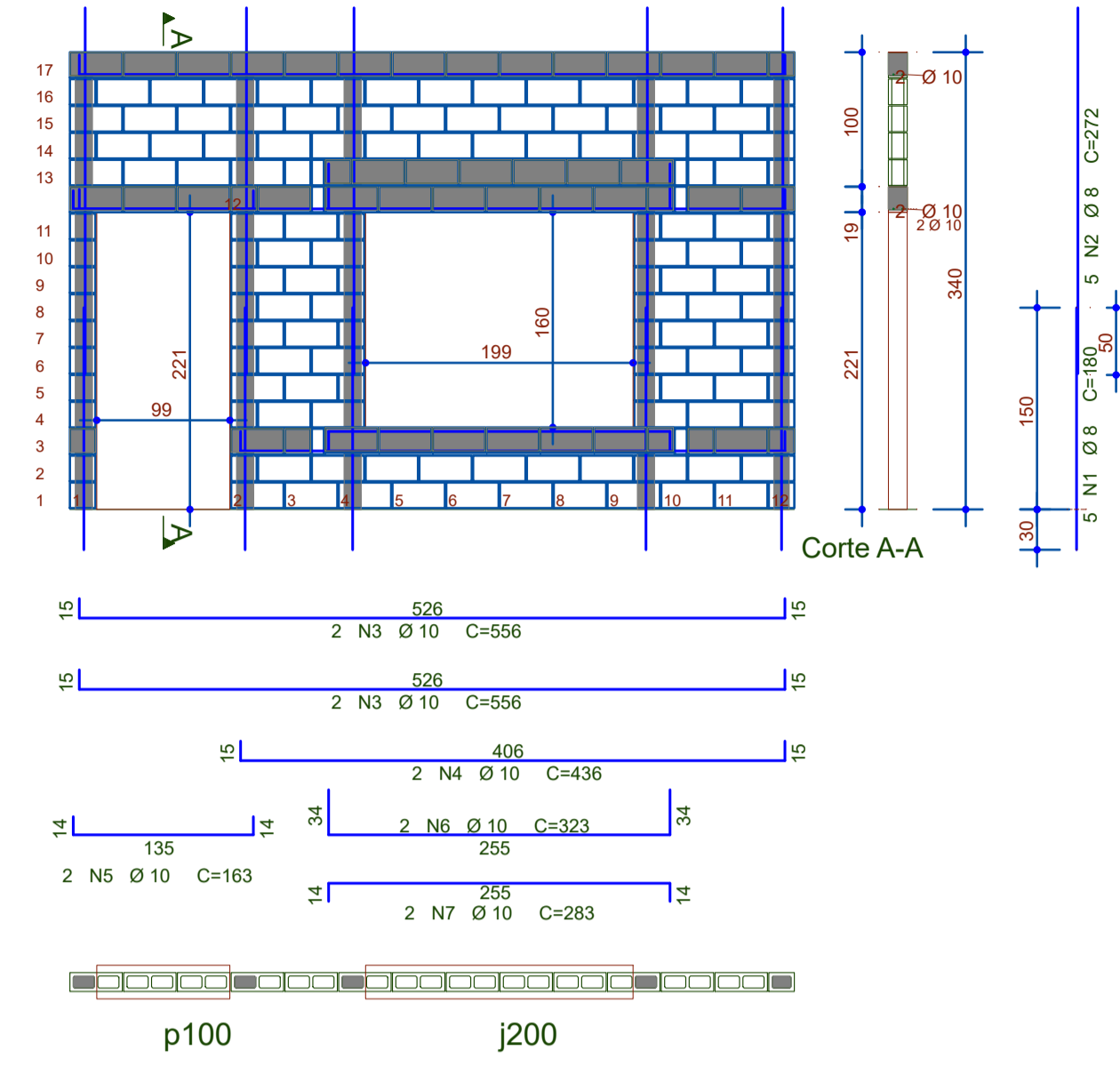


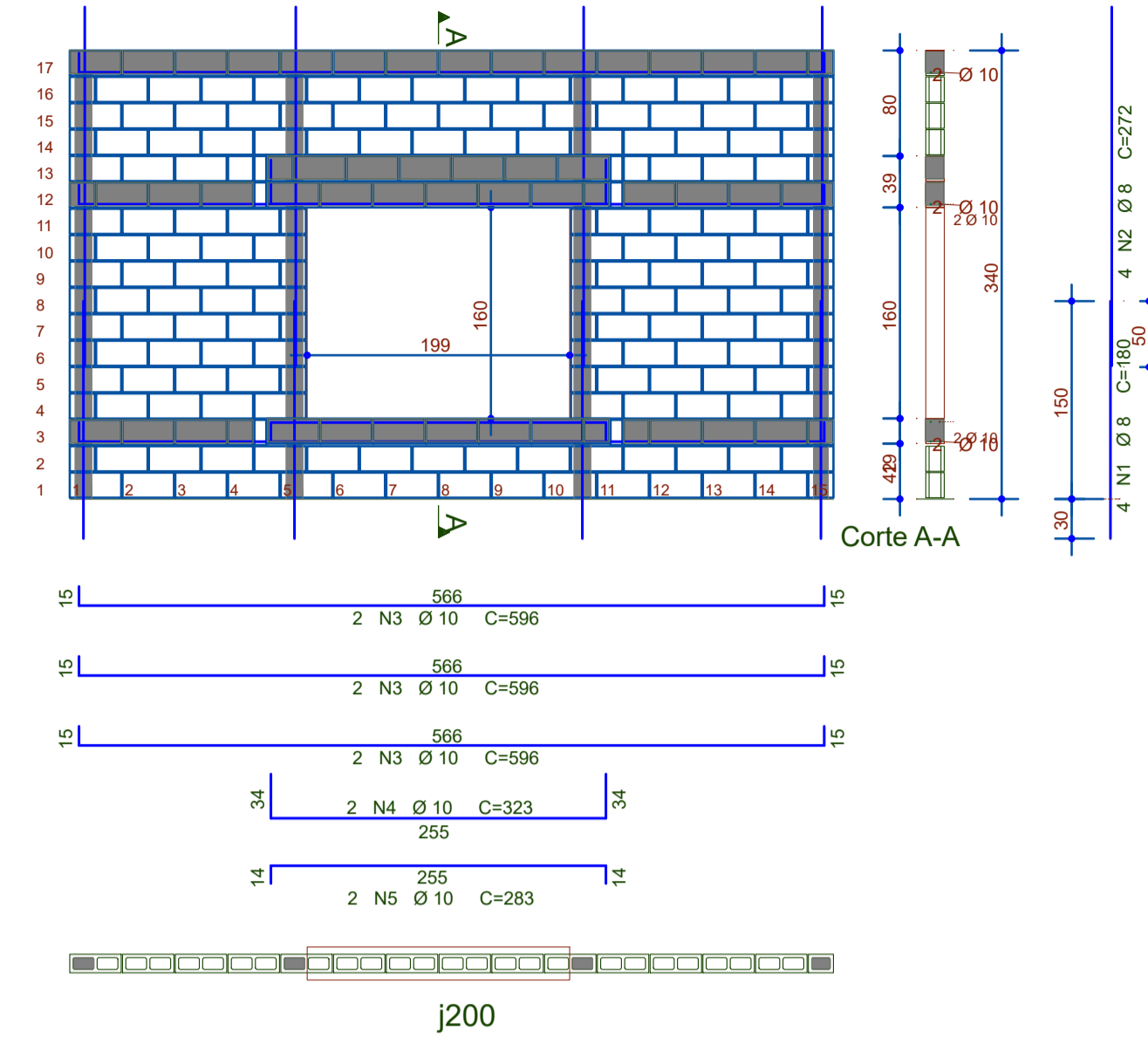
Par1



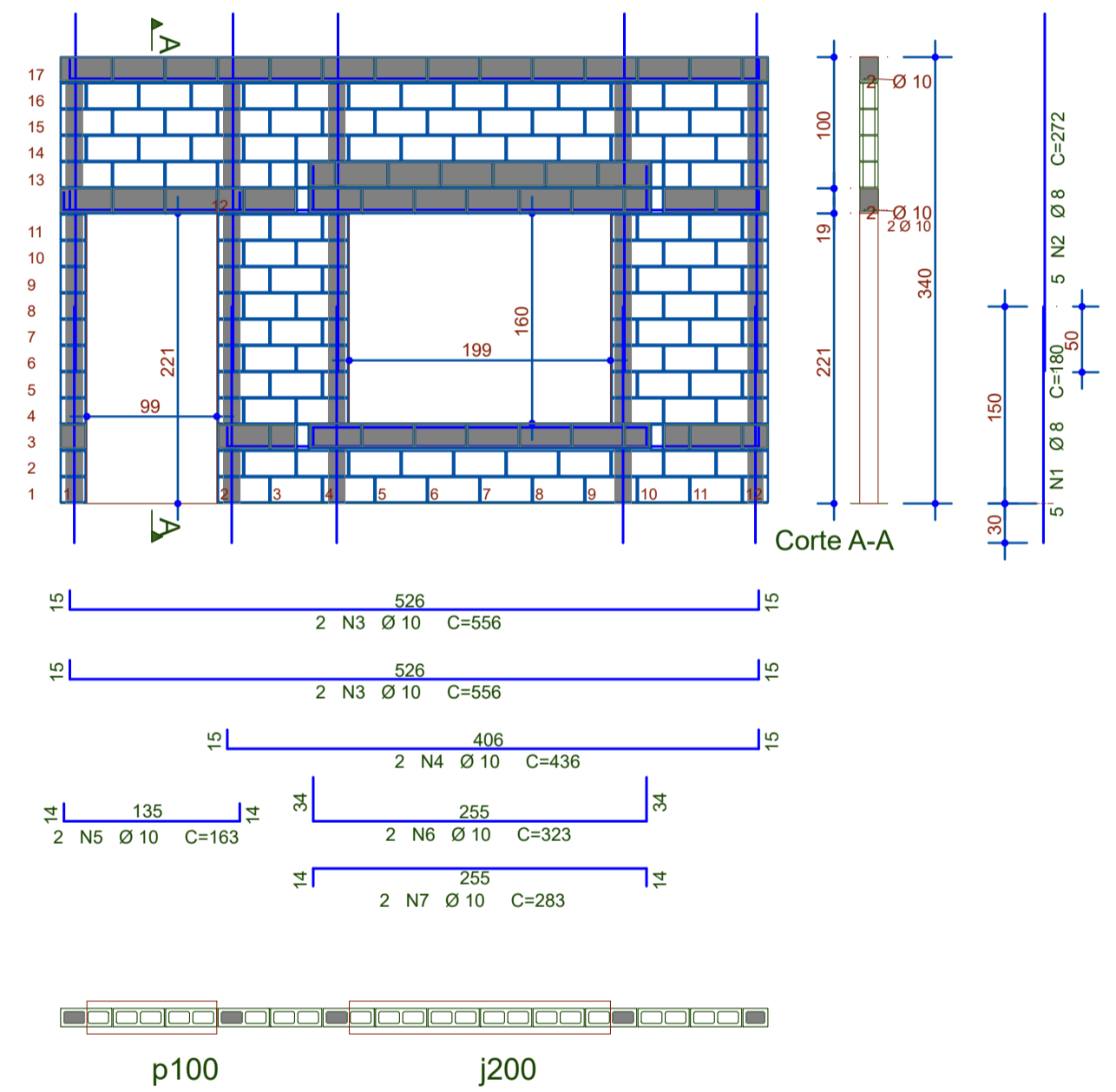
Par2



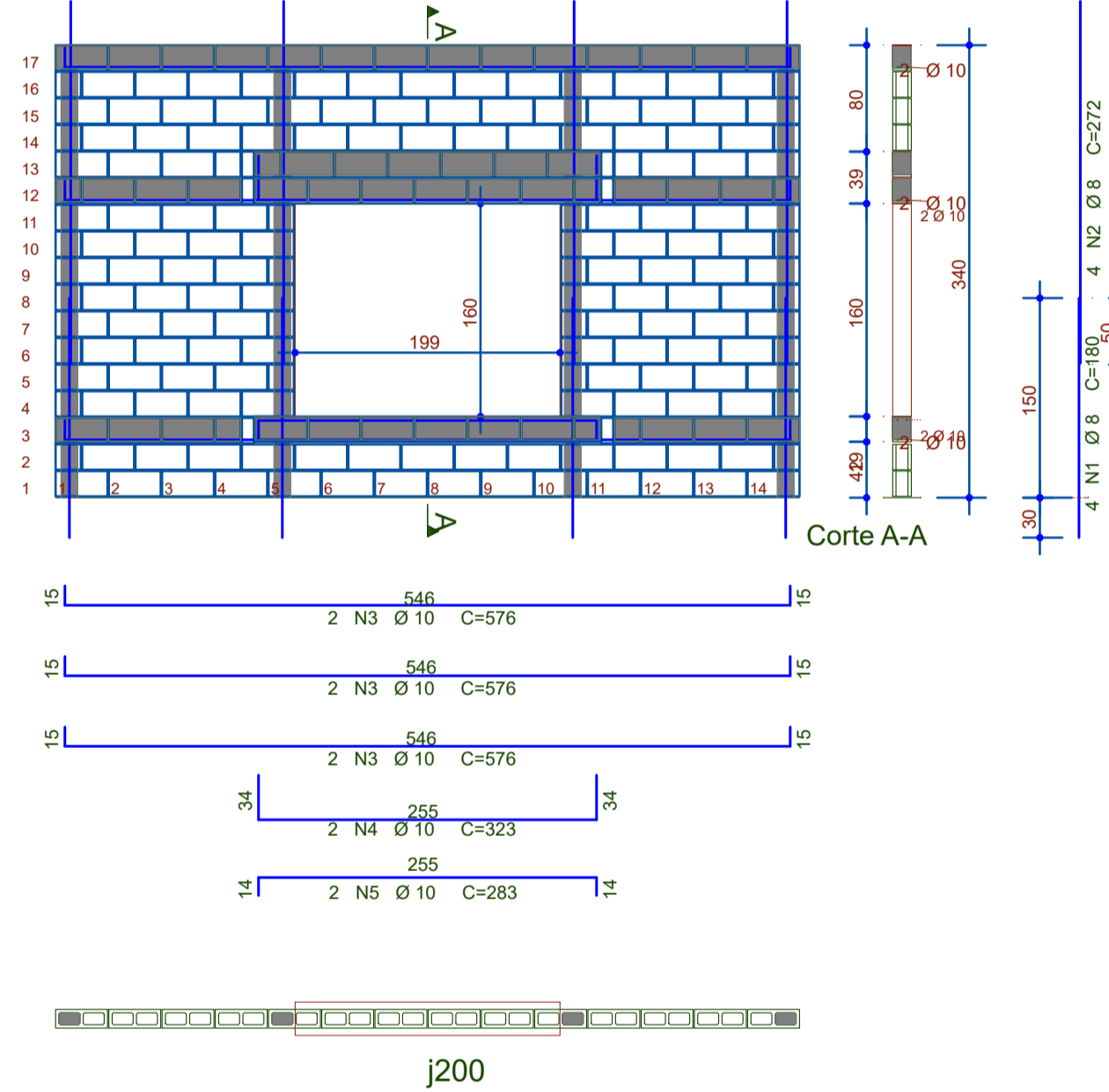
Par3



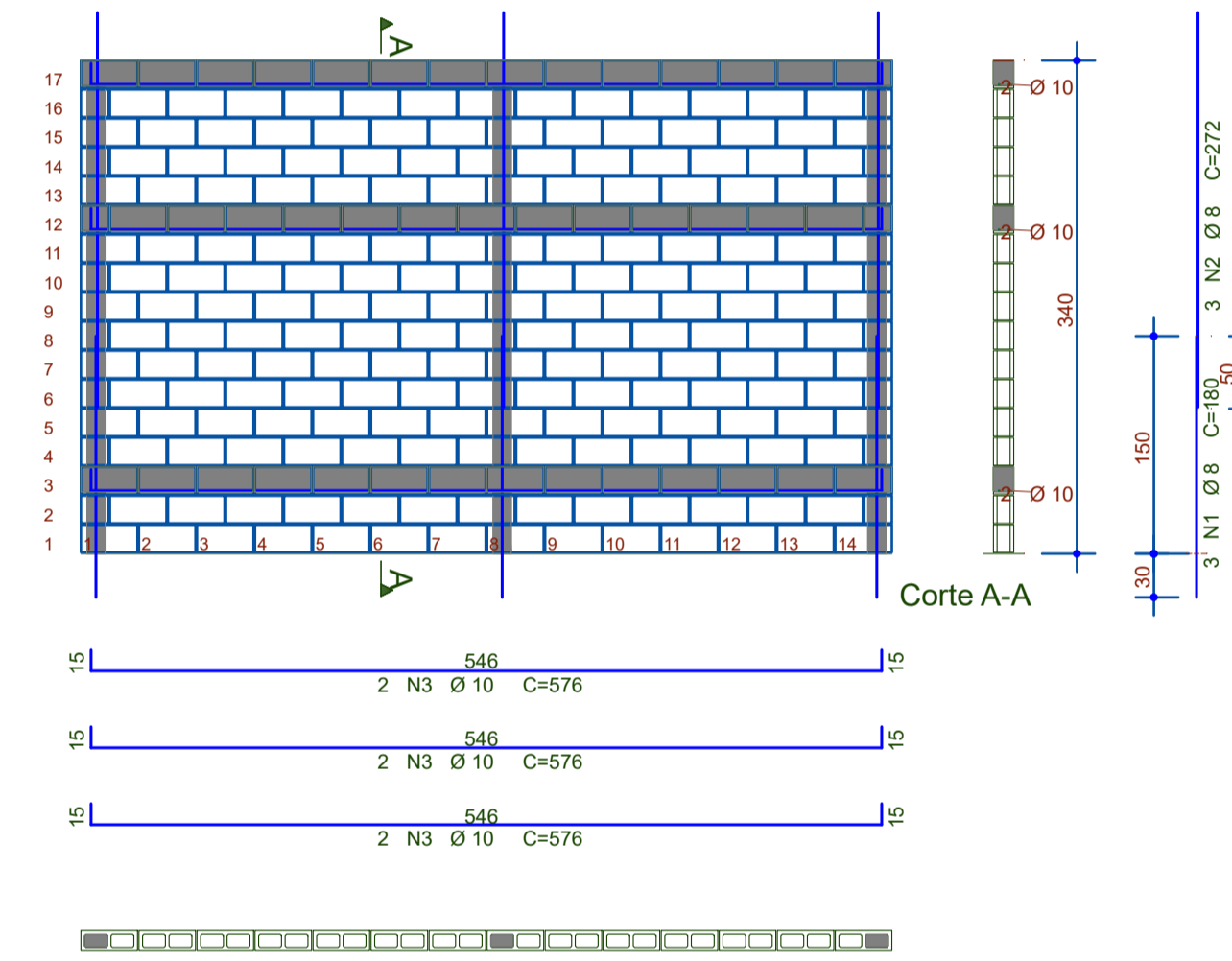
Par4



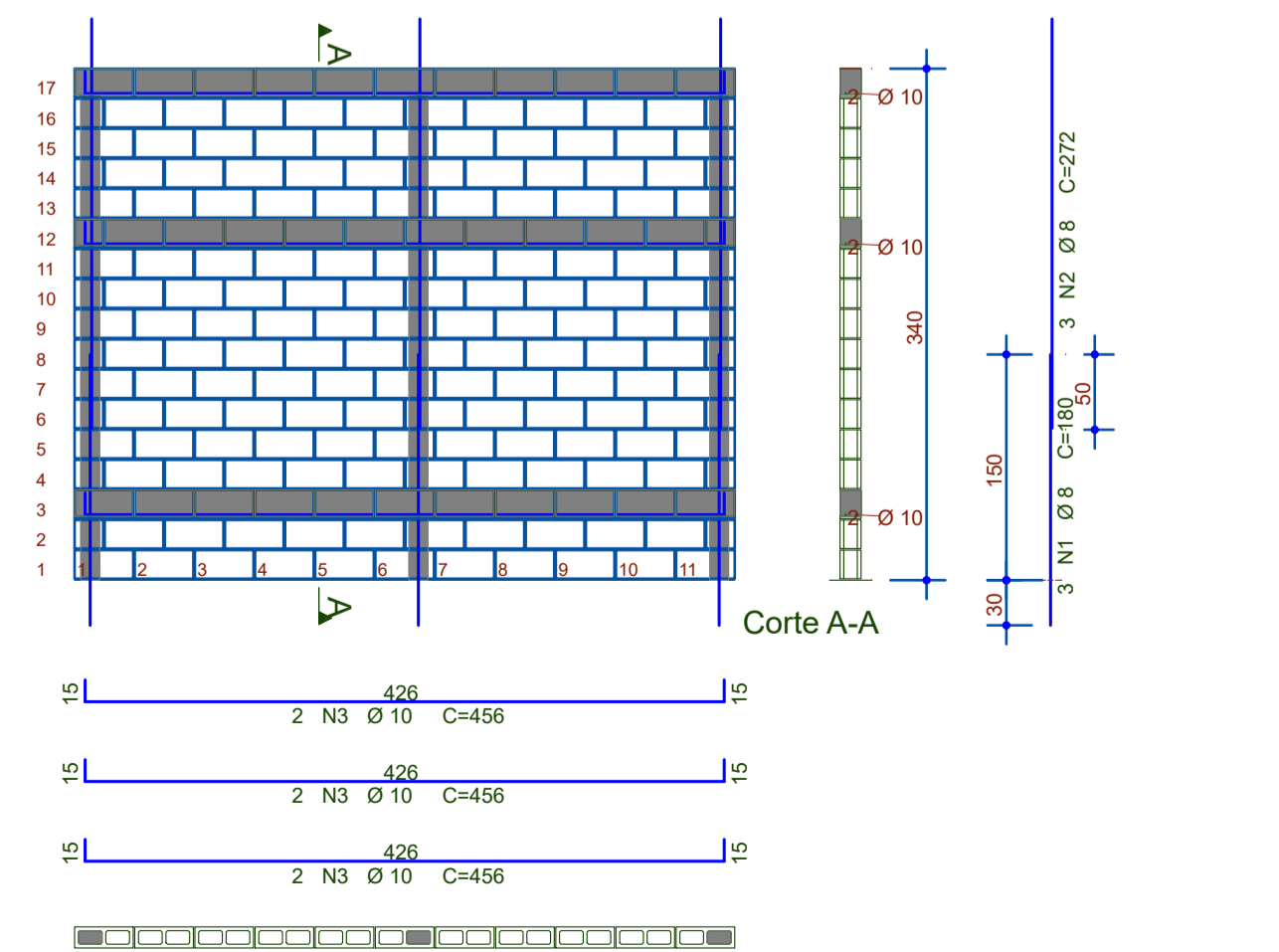
Par5



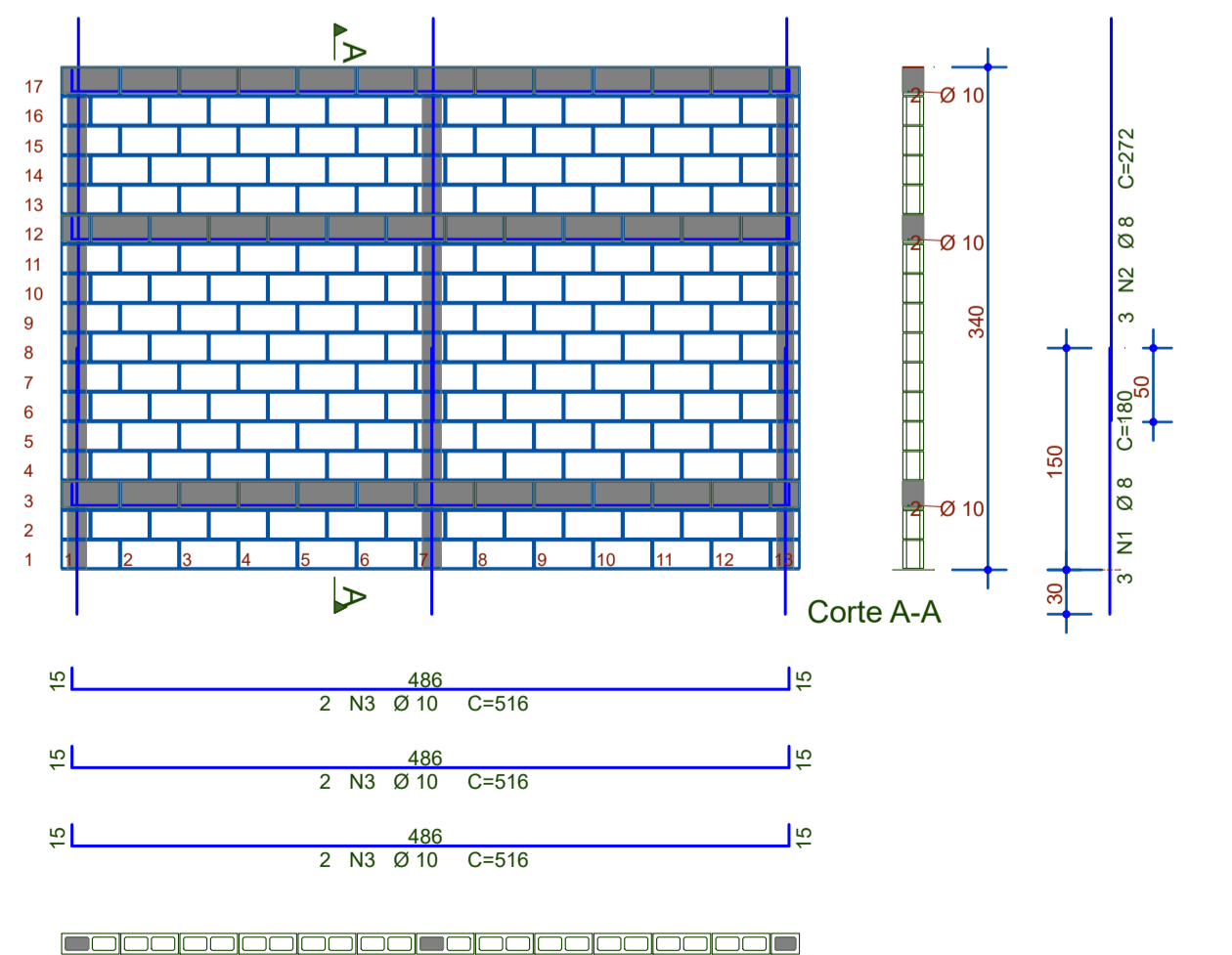
Par6



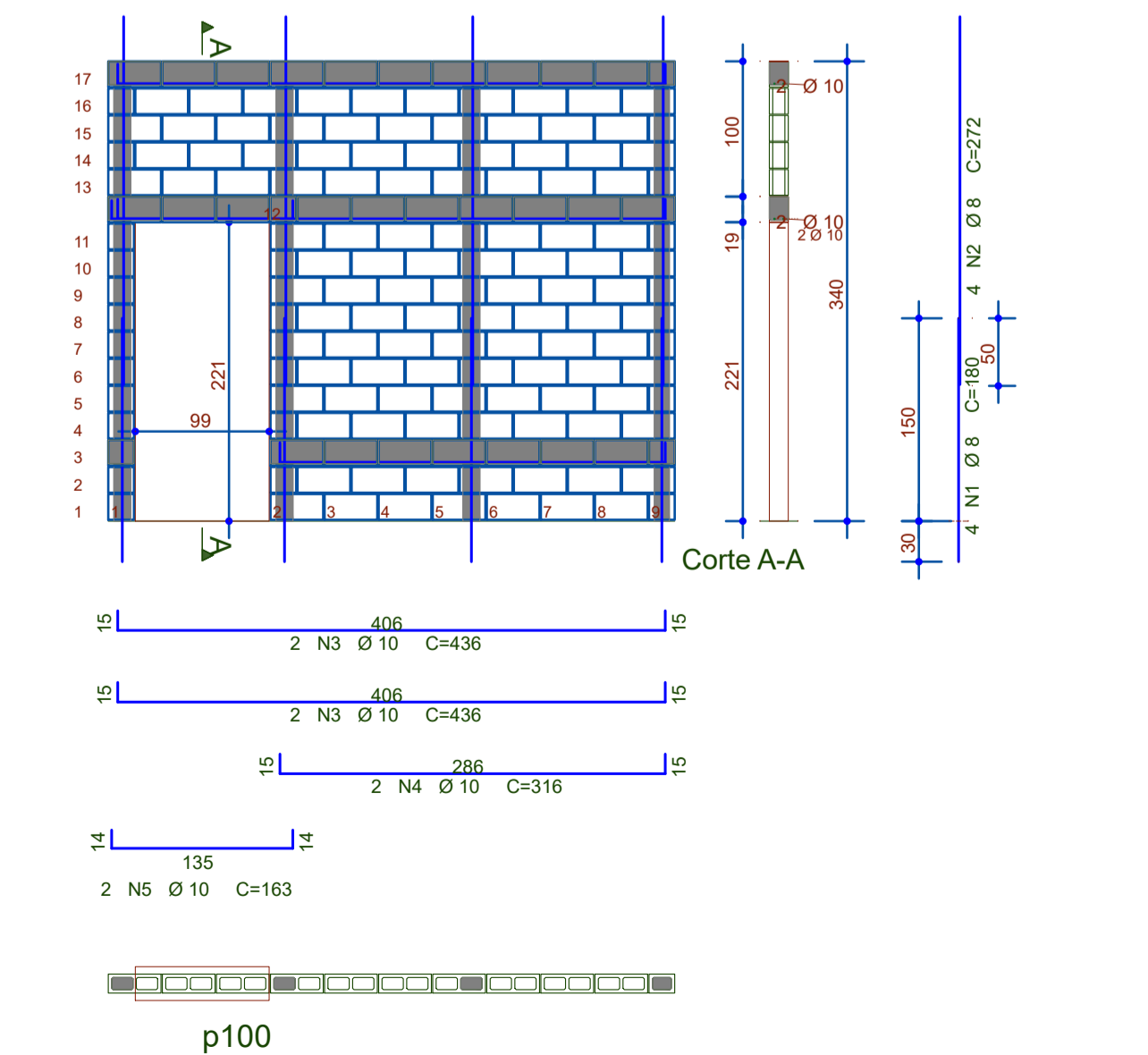
Par7



Par8

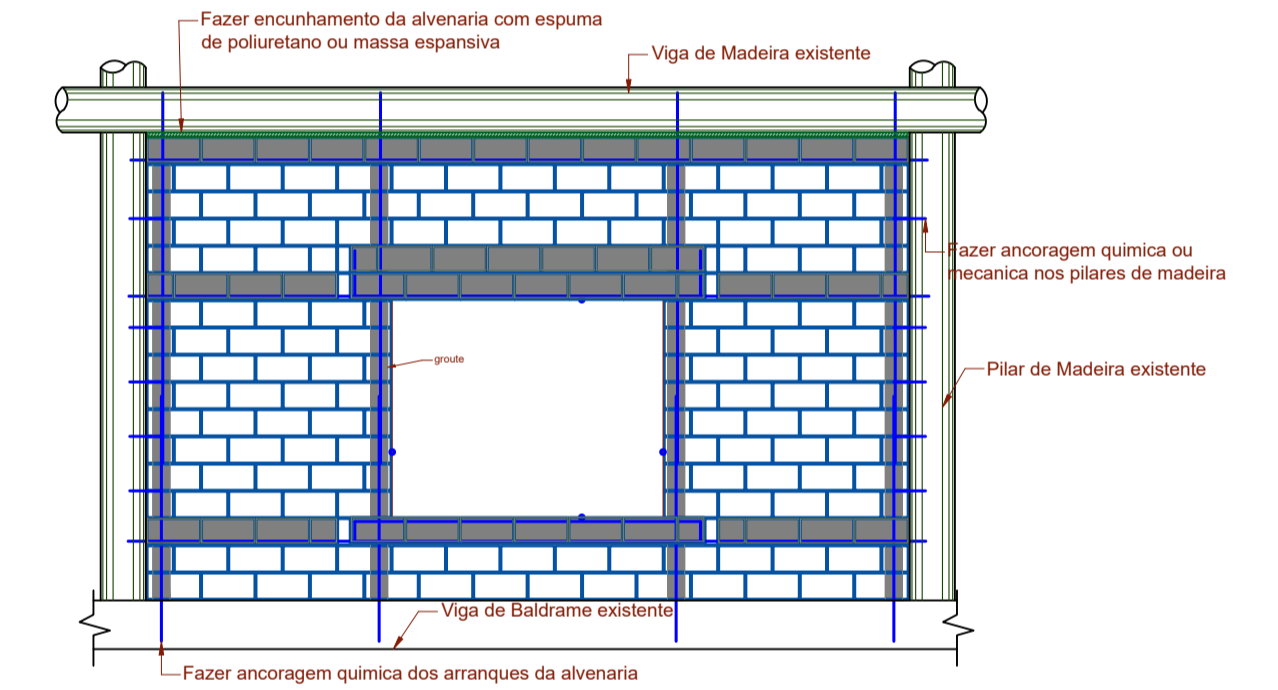


Par9



AÇO	POS	BIT	QUANT	COMPRIMENTO	
				UNIT	TOTAL
		mm		cm	cm
<b>Par1</b>					
50A	1	8	4	180	720
50A	2	8	4	272	1088
50A	3	10	6	576	3456
50A	4	10	2	323	646
50A	5	10	2	283	566
<b>Par2</b>					
50A	1	8	5	180	900
50A	2	8	5	272	1360
50A	3	10	4	556	2224
50A	4	10	2	436	872
50A	5	10	2	163	326
50A	6	10	2	323	646
50A	7	10	2	283	566
<b>Par3</b>					
50A	1	8	4	180	720
50A	2	8	4	272	1088
50A	3	10	6	596	3576
50A	4	10	2	323	646
50A	5	10	2	283	566
<b>Par4</b>					
50A	1	8	5	180	900
50A	2	8	5	272	1360
50A	3	10	4	556	2224
50A	4	10	2	436	872
50A	5	10	2	163	326
50A	6	10	2	323	646
50A	7	10	2	283	566
<b>Par5</b>					
50A	1	8	4	180	720
50A	2	8	4	272	1088
50A	3	10	6	576	3456
50A	4	10	2	323	646
50A	5	10	2	283	566
<b>Par6</b>					
50A	1	8	3	180	540
50A	2	8	3	272	816
50A	3	10	6	576	3456
<b>Par7</b>					
50A	1	8	3	180	540
50A	2	8	3	272	816
50A	3	10	6	456	2736
<b>Par8</b>					
50A	1	8	3	180	540
50A	2	8	3	272	816
50A	3	10	6	516	3096
<b>Par9</b>					
50A	1	8	4	180	720
50A	2	8	4	272	1088
50A	3	10	4	436	1744
50A	4	10	2	316	632
50A	5	10	2	163	326

RESUMO DE AÇO			
AÇO	BIT	COMPR	PESO
	mm	m	kgf
50A	8	158	62
50A	10	354	218
Peso Total 50A =			281 kgf



Detalhe tipico de painel de Alvenaria

Revisão:	Anotações:	Data:	Observações:



Engenharia e Construções

**L.U Moreira Construções LTDA**  
 CNPJ: 20.337.554/0001-96  
 Inscrição municipal: 0090404  
 CREA-SP: 2031460

projetos@luengenharia.com.br / contato@luengenharia.com.br  
 Tel: (19) 9.973.77072 / 9.9959.7893  
 www.luengenharia.com.br

# Projeto Estrutural

Assunto:  
**ELEVAÇÃO DE ALVENARIA  
 PAREDES 1 A 9**

LOCAL: ESCOLA DAS ARTES, PARQUE DOS LAGOS, LAGO 3 - JAGUARIUNA/SP

PROPRIETARIO: PREFEITURA DO MUNICIPIO DE JAGUARIUNA  
 AUTOR E RESPONSÁVEL TÉCNICO: Ulisses Moreira de Souza  
 Engenheiro Civil CREA-SP: 5056142/8

ESCALA: 1/50  
 CARACTERÍSTICAS MATERIAIS DA ALVENARIA: fbk=4.0, fpk=3.2, fa=4.0, ftk= 15.00 MPa  
 DATA: 02/06/2022  
 FOLHA: 02/03