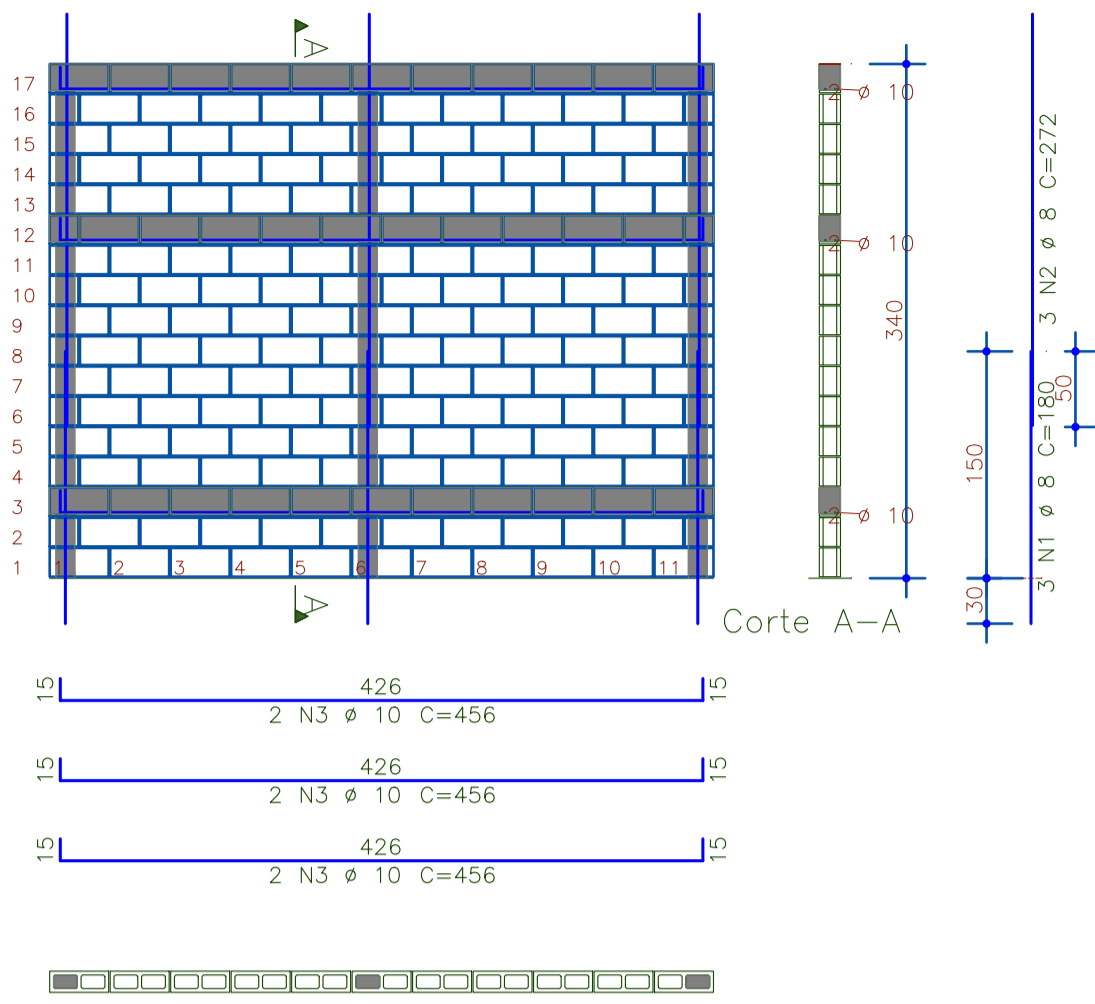
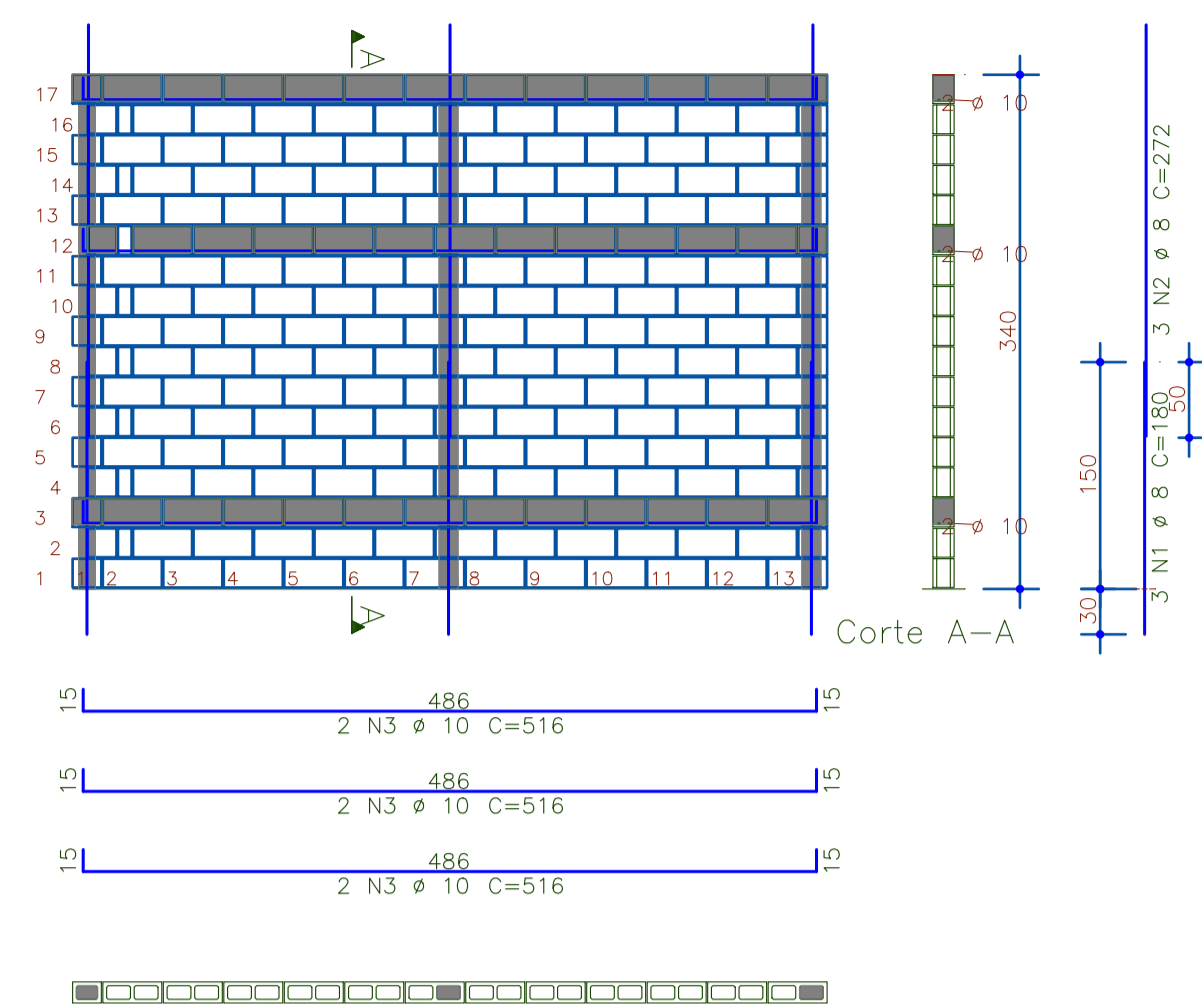


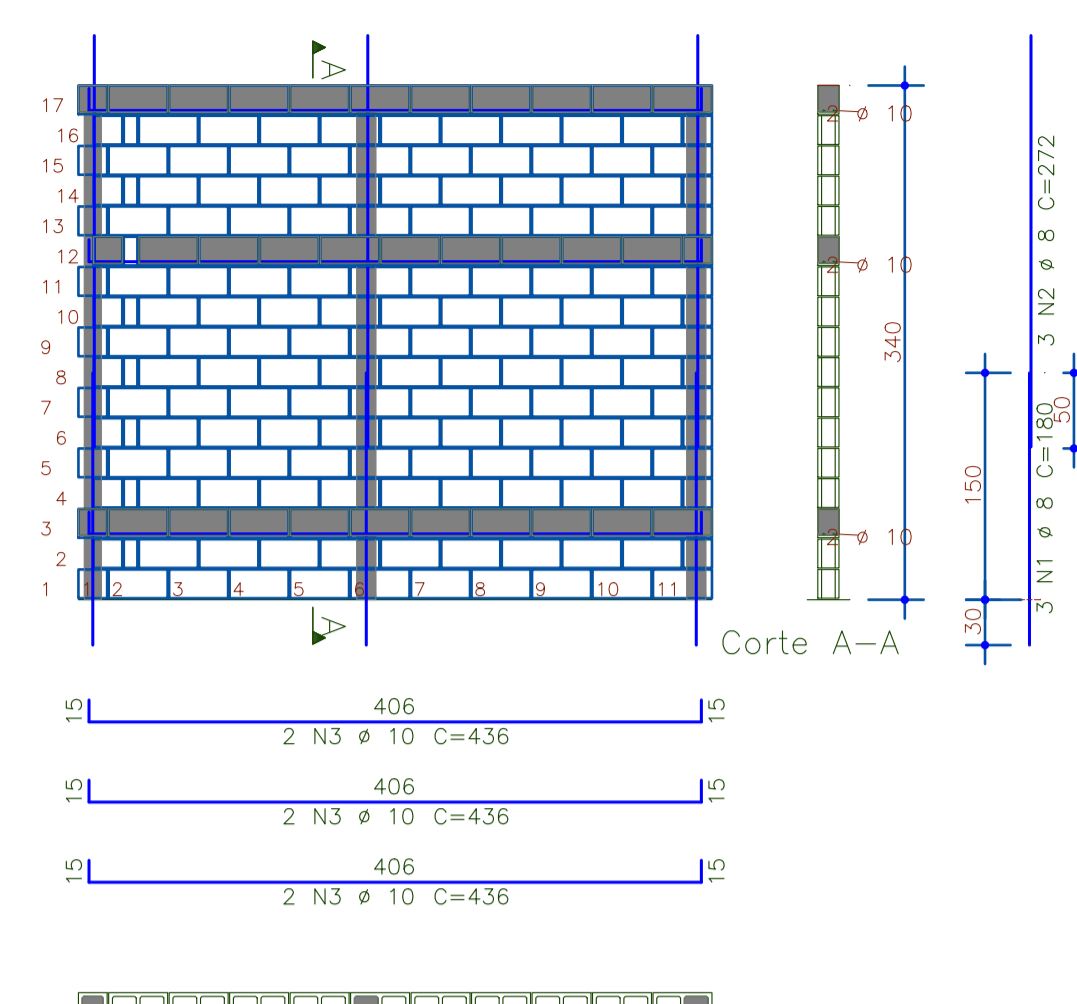
Par10



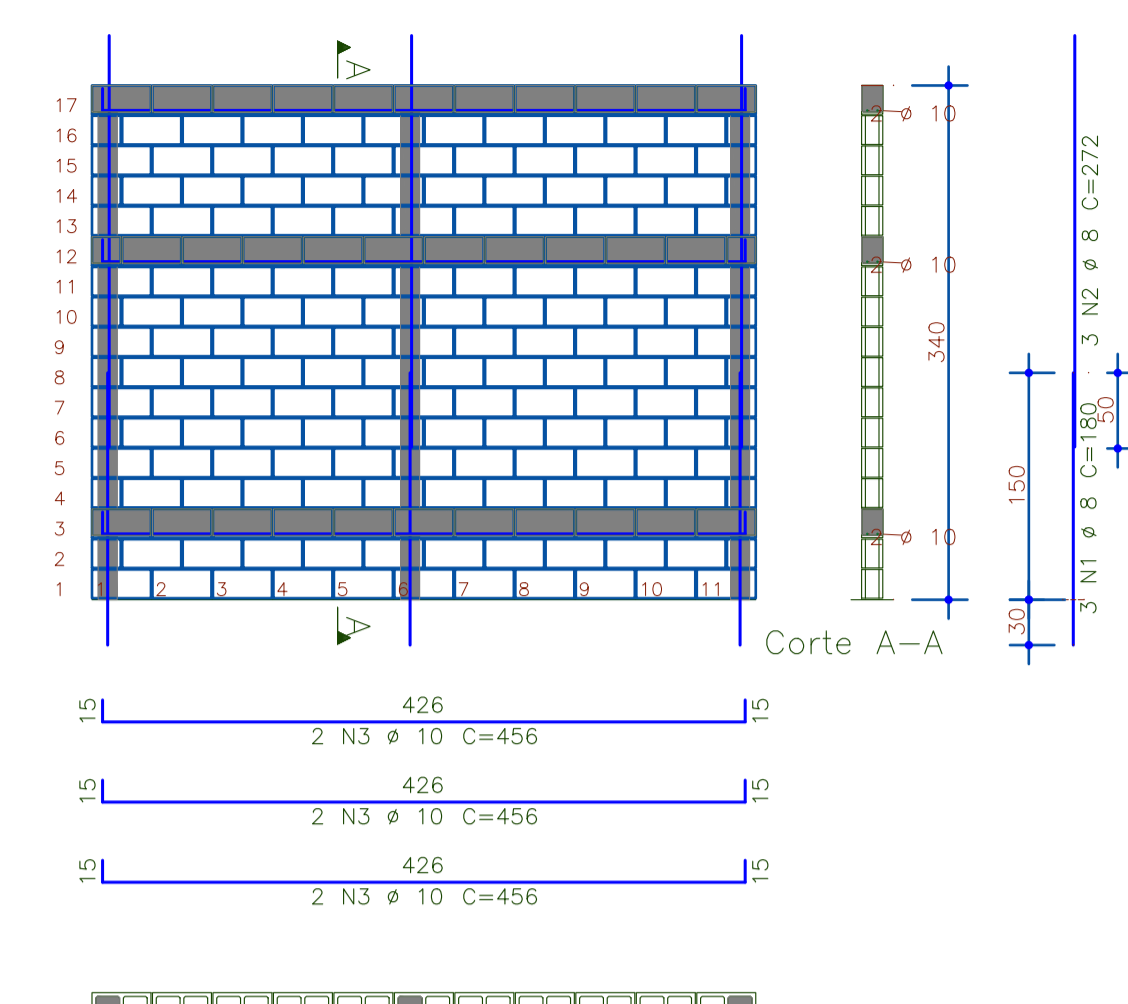
Par11



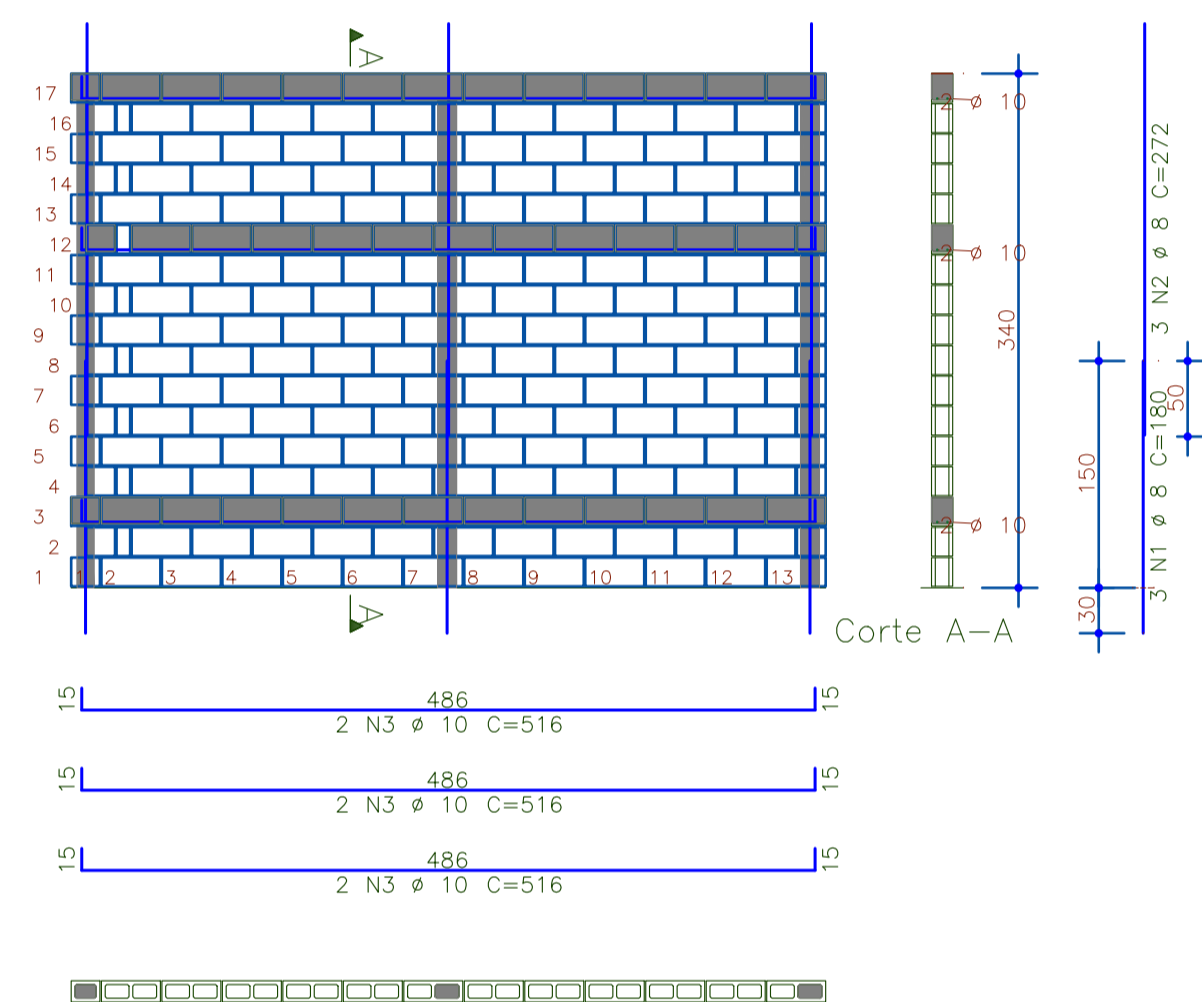
Par12



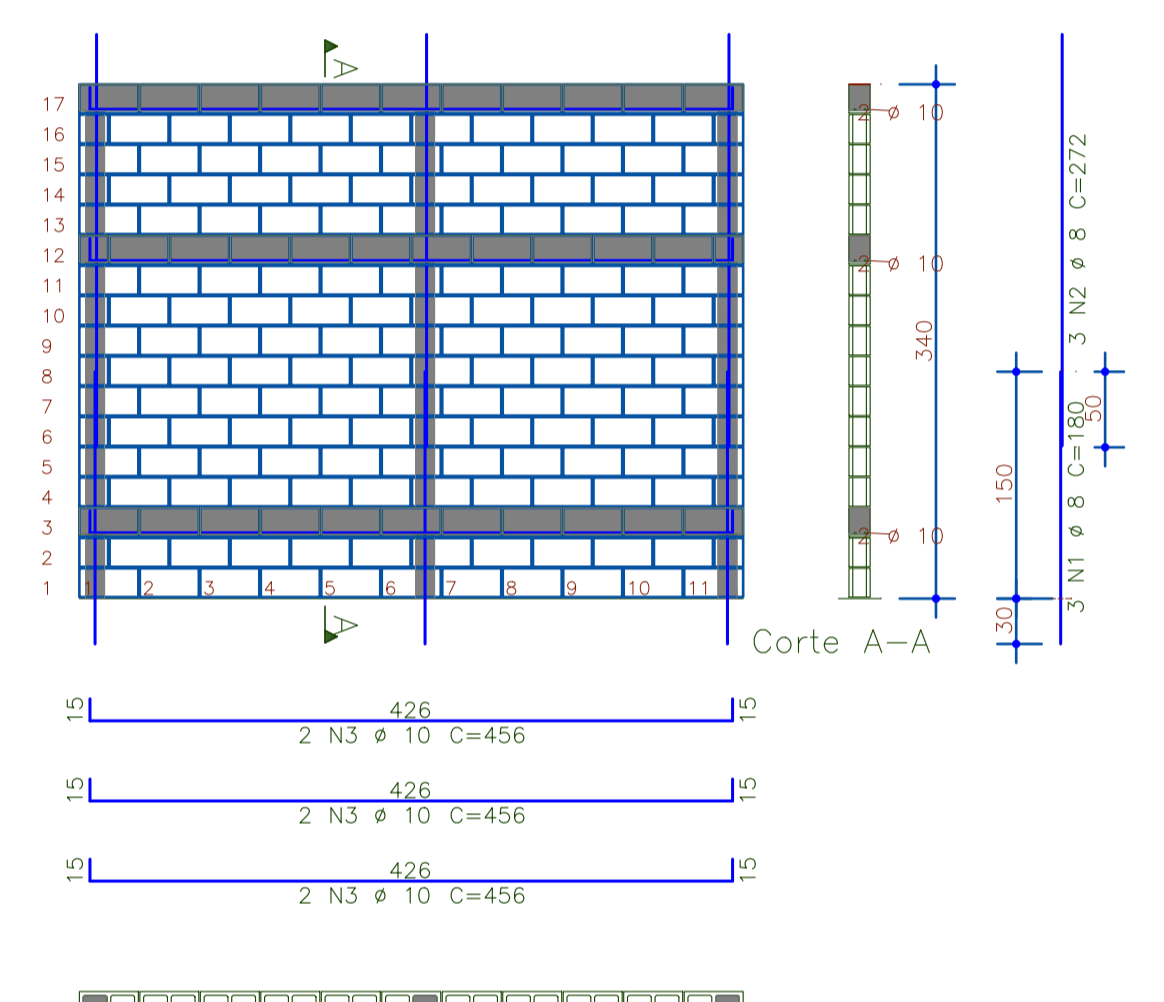
Par13



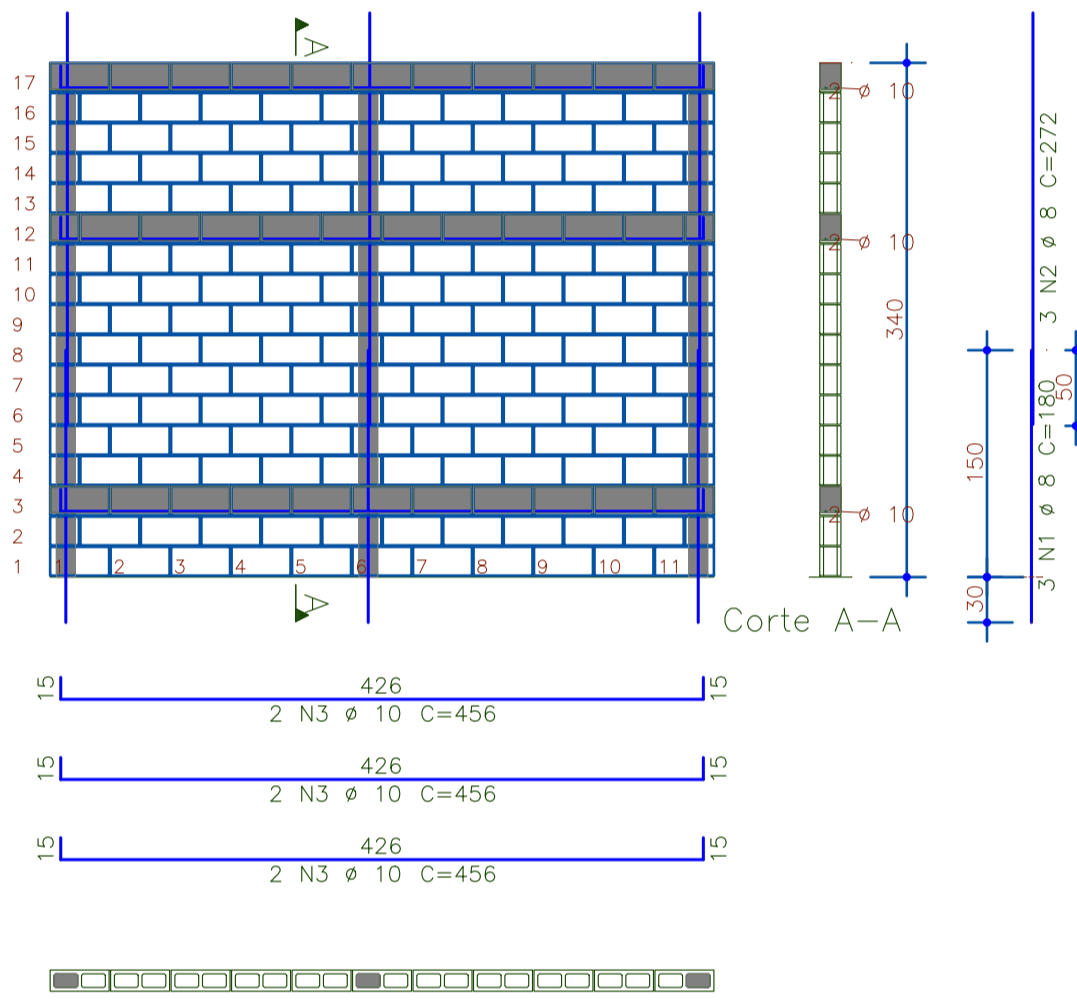
Par14



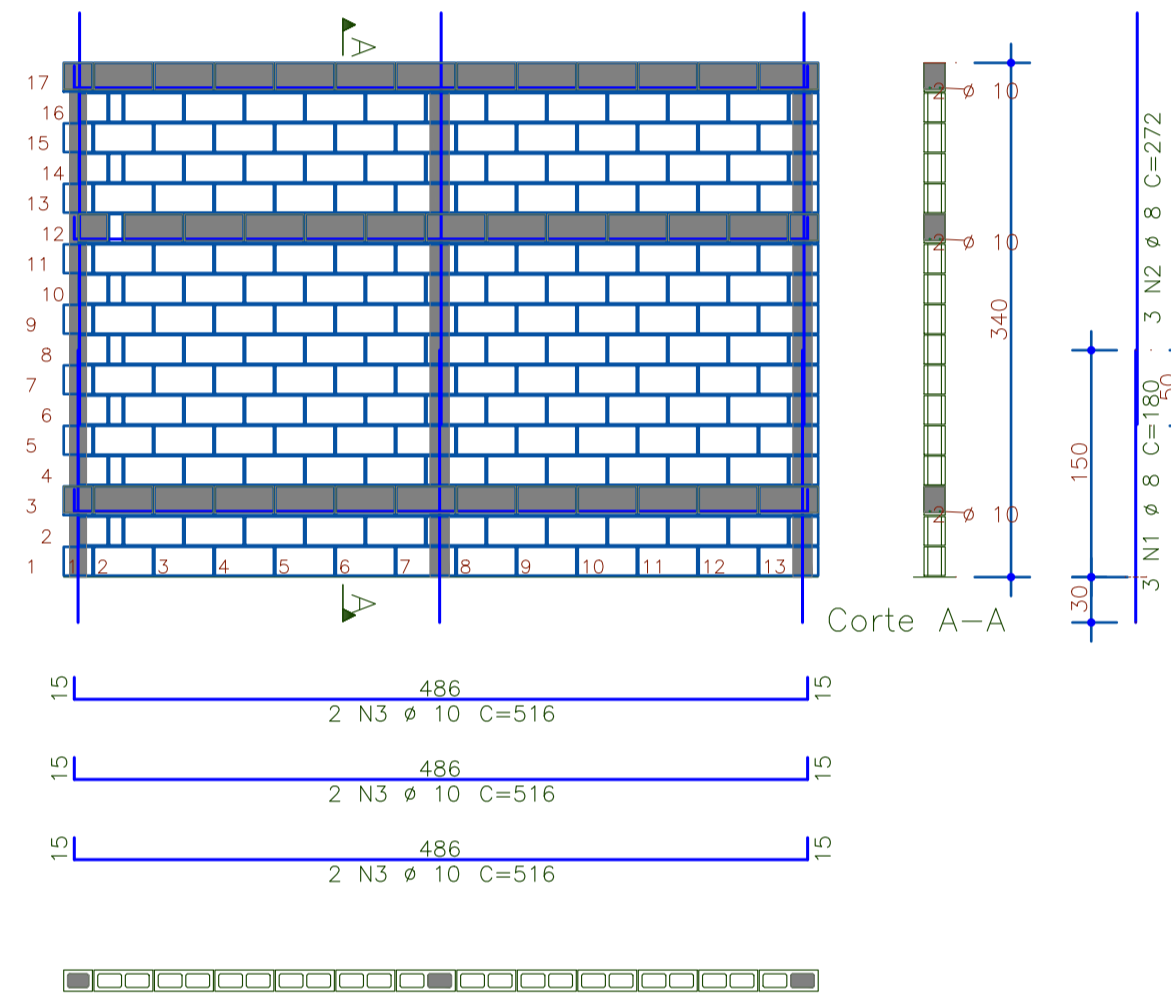
Par15



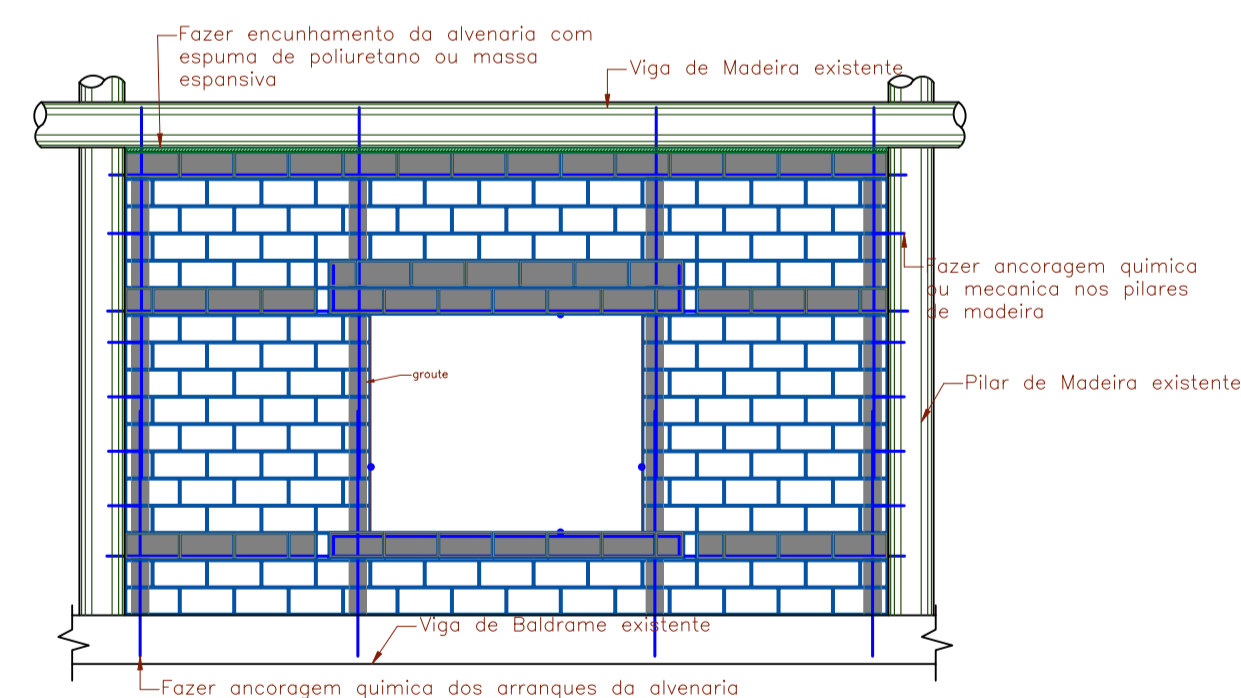
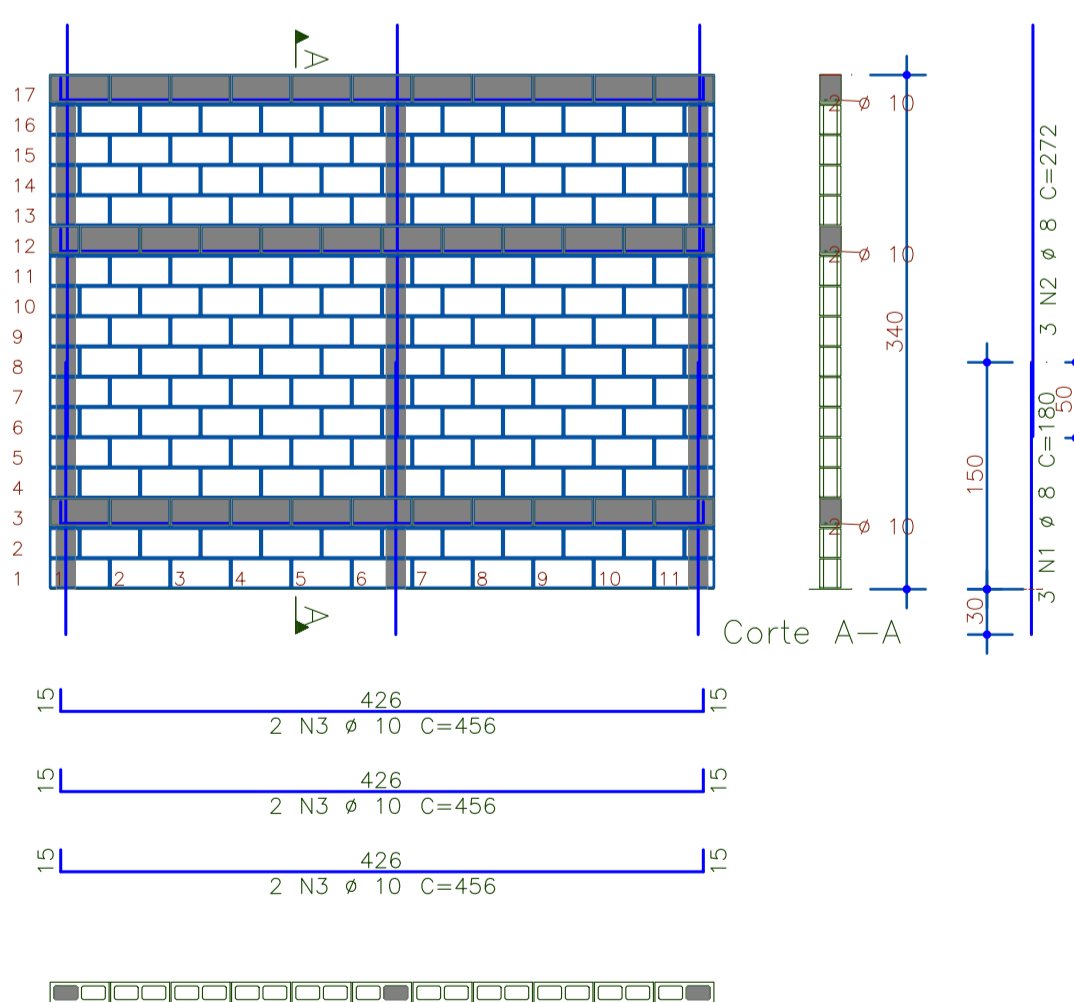
Par16



Par17



Par18



Detalhe tipico de painel de Alvenaria

AÇO	POS	BIT	QUANT	COMPRIMENTO	
				UNIT	TOTAL
		mm		cm	cm
Par10					
50A	1	8	3	180	540
50A	2	8	3	272	816
50A	3	10	6	456	2736
Par11					
50A	1	8	3	180	540
50A	2	8	3	272	816
50A	3	10	6	516	3096
Par12					
50A	1	8	3	180	540
50A	2	8	3	272	816
50A	3	10	6	436	2616
Par13					
50A	1	8	3	180	540
50A	2	8	3	272	816
50A	3	10	6	456	2736
Par14					
50A	1	8	3	180	540
50A	2	8	3	272	816
50A	3	10	6	516	3096
Par15					
50A	1	8	3	180	540
50A	2	8	3	272	816
50A	3	10	6	456	2736
Par16					
50A	1	8	3	180	540
50A	2	8	3	272	816
50A	3	10	6	456	2736
Par17					
50A	1	8	3	180	540
50A	2	8	3	272	816
50A	3	10	6	516	3096
Par18					
50A	1	8	3	180	540
50A	2	8	3	272	816
50A	3	10	6	456	2736

RESUMO DE AÇO			
AÇO	BIT	COMPR	PESO
		m	kgf
50A	8	122	48
50A	10	256	158
Peso Total		50A =	206 kgf

Revisão:	Anotações:	Data:	Observações:


L.U Moreira Construções LTDA
 CNPJ: 20.337.554/0001-96
 Inscrição municipal: 0090404
 CREA -SP: 2031460
 projetos@luengenharia.com.br / contato@luengenharia.com.br
 Tel: (19) 9.973.77072 / 9.9959.7893
 www.luengenharia.com.br

Projeto Estrutural

Assunto:
ELEVAÇÃO DE ALVENARIA
PAREDES 10 A 18

LOCAL: ESCOLA DAS ARTES, PARQUE DOS LAGOS, LAGO 3 - JAGUARIUNA/SP

PROPRIETARIO: PREFEITURA DO MUNICIPIO DE JAGUARIUNA
 AUTOR E RESPONSÁVEL TÉCNICO: Ulisses Moreira de Souza, Engenheiro Civil CREA-SP: 5069614528

ESCALA: 1/50
 CARACTERÍSTICAS MATERIAIS DA ALVENARIA: fbk=4.0, fpk=3.2, fa=4.0, fgg= 15.00 MPa
 DATA: 02/06/2022
 FOLHA: 03/03