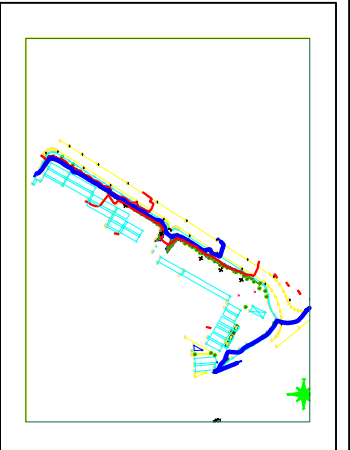
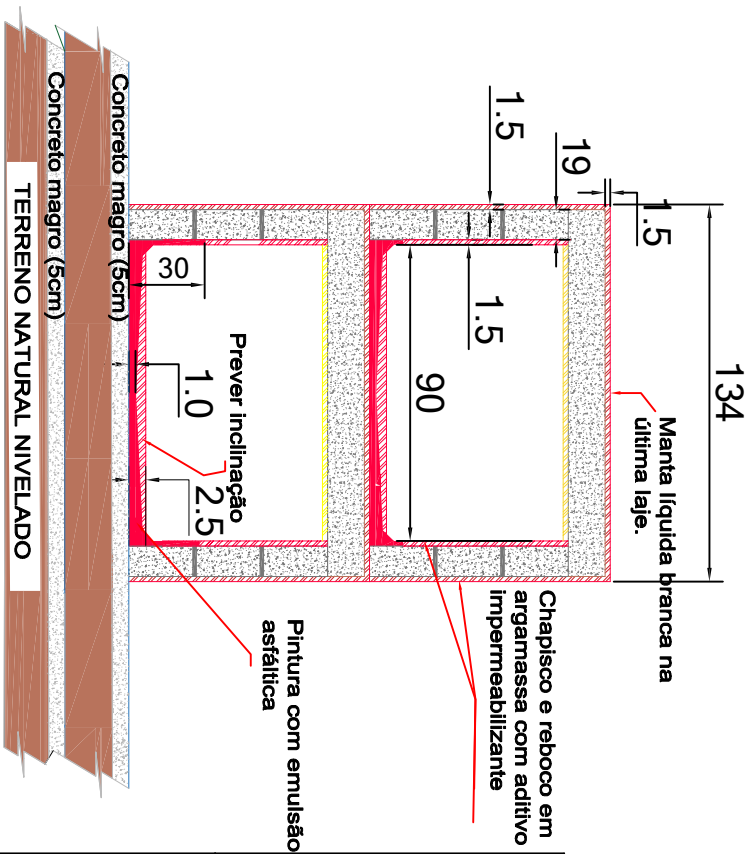
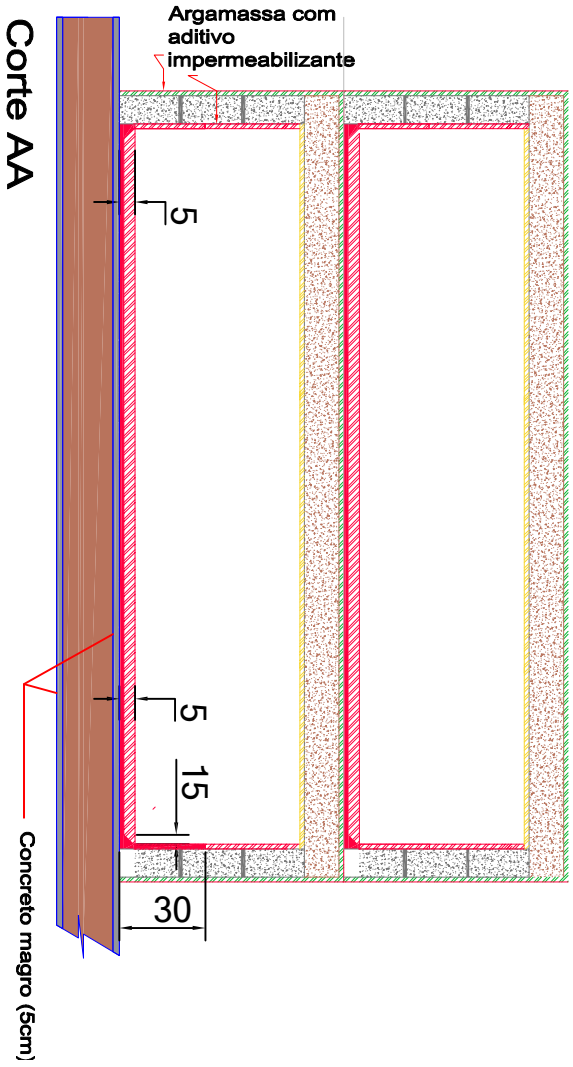
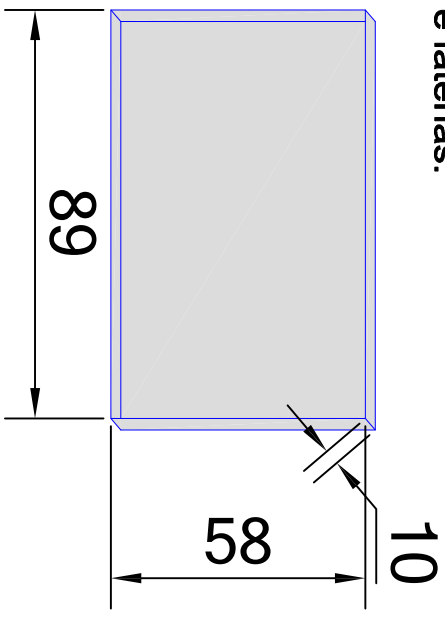


152 tampas de concreto pré-moldadas (25MPa) com aditivo impermeabilizante e emulsão asfáltica nas partes internas e laterais.



NOME		DEPARTAMENTO	
OBRAS		ENGENHARIA	
PROJ. Nº	2005/2024	TIPO	GABRIEL
DIV.		PROJETO	GABRIEL

Prefeitura do Município de Jaganópolis

AVISO

VISTA FRONTAL E ANTERIOR